



MLS 6485772 Residential

\$565,000

1,584 sq ft
3 bedrooms
1 baths

1690 Sunnyside Road
Bemidji MN 56601

Status: Active

Description:

Over 41 acres of land located just SE of Bemidji in the Frohn Township. This commercially zoned property offers a rural feel while being close to town. It has a permit allowing automotive related activities. The property includes two residences, a mobile home and a house. The house's info is what's listed. In addition there's the office building spanning 3,706', with 1886' heated.. There's also 3 heated shops (2 have car hoists) and 4 other buildings, totaling over 36,000' of space across 10 structures. Plus, there's great deer hunting out back!

The commercial business listing associated with this property is MLS# 6437695, with a PID# of 14003740. The listing agent is the owner. This listing is for the land and buildings only, business would be closed and inventory/cars cleared out.

Additional Details:

Year Built	1980
Lot Acres	41.03
Lot Dimensions	1320 x 1320 APPROX
School District	31
Taxes	\$4,156
Taxes with Assessments	\$4,156
Tax Year	2023

Additional Features:

Fuel: Propane **Heat:** Forced Air

Driving Directions:

Going SE on Paul Bunyan Drive, turn left onto Roosevelt and go 3.8 miles to Sunnyside. Turn right on Sunnyside and go .6 miles, property is on the left.



Listed By:
Headwaters Realty Services

Affinity Real Estate Inc. participates in the Regional Multiple Listing Service of Minnesota, Inc Broker Reciprocity (sm) program, allowing us to display other broker's listings on our website. All properties are subject to prior sale, change or withdrawal.



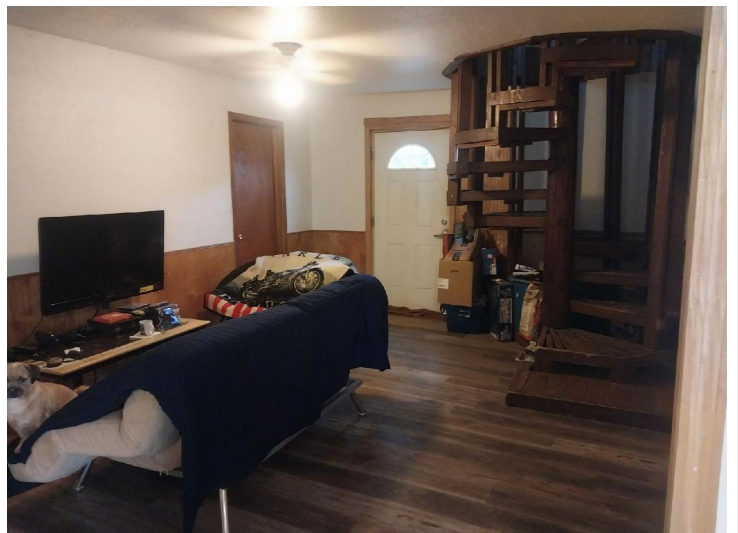
Call Affinity Real Estate

218-237-3333

info@affinityrealestate.com



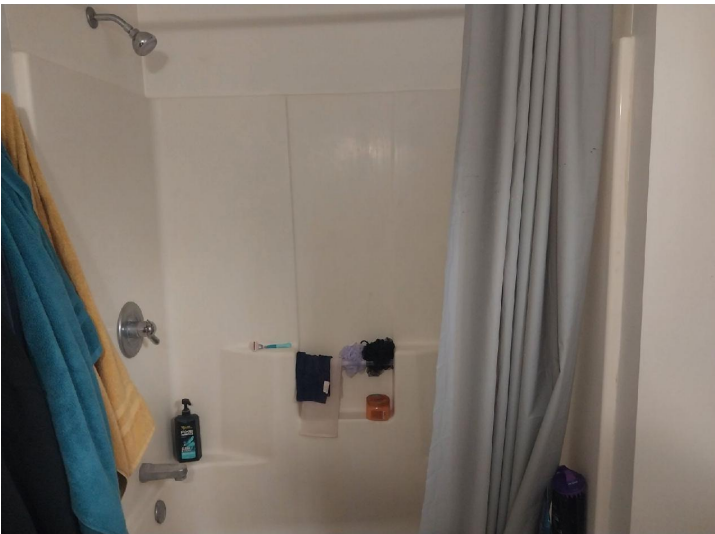
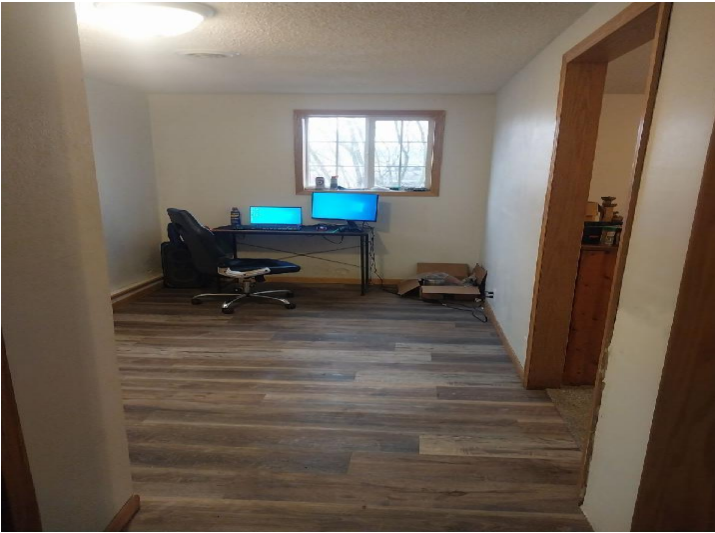
Affinity Real Estate - 600 Park Avenue South - Park Rapids MN 56470



website: www.AffinityRealEstate.com | email: info@affinityrealestate.com | office: 218-237-3333 | fax: 218-237-3377

Affinity
REAL ESTATE INC

\$565,000
MLS 6485772 Residential
1690 Sunnyside Road
Bemidji MN 56601



website: www.AffinityRealEstate.com | email: info@affinityrealestate.com | office: 218-237-3333 | fax: 218-237-3377



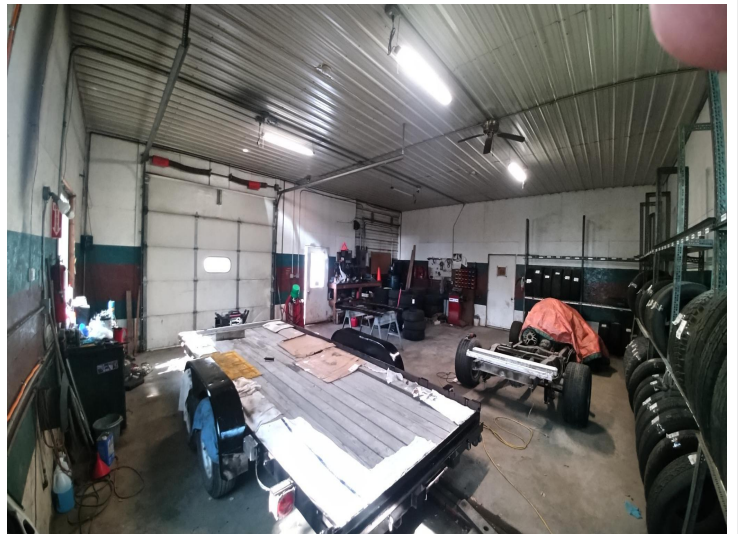
\$565,000
MLS 6485772 Residential
1690 Sunnyside Road
Bemidji MN 56601



website: www.AffinityRealEstate.com | email: info@affinityrealestate.com | office: 218-237-3333 | fax: 218-237-3377



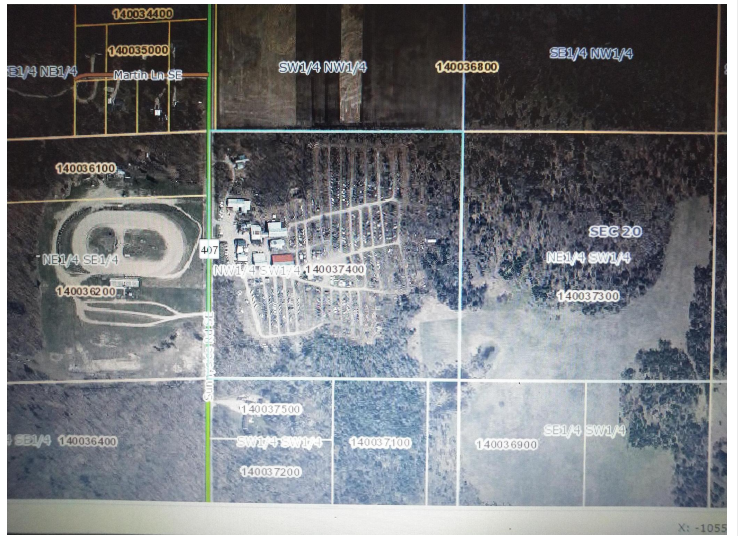
\$565,000
 MLS 6485772 Residential
 1690 Sunnyside Road
 Bemidji MN 56601



website: www.AffinityRealEstate.com | email: info@affinityrealestate.com | office: 218-237-3333 | fax: 218-237-3377



\$565,000
 MLS 6485772 Residential
 1690 Sunnyside Road
 Bemidji MN 56601



website: www.AffinityRealEstate.com | email: info@affinityrealestate.com | office: 218-237-3333 | fax: 218-237-3377



\$565,000
 MLS 6485772 Residential
 1690 Sunnyside Road
 Bemidji MN 56601