



MLS 6486070 Residential

**\$649,900**

3,758 sq ft  
4 bedrooms  
3 baths

20244 County Highway 29  
Rochert MN 56578

Status: Active

**Description:**

Rare and beautiful property, close to Cotton Lake! 4 bed, 3 bath stunner, the perfect combination of warmth and beauty. This move in ready home has been updated in all the right spaces! Master bathroom renovation creates a private oasis with heated floors. New quartz countertops added the finishing touch in the already beautiful kitchen with hickory floors. Grand two story ceiling in the living room speaks to the luxury available here. Deck off the dining room leads to the above ground pool where you can soak in every minute of sunshine. Beautiful landscaping will provide color all summer long! Brand new septic and a bonus space! A stand alone building previously used as a salon was built to have a versatile future! Plumbed to add a shower- there are SO many options for this two story building with a separate garage. Lots of entertainment options nearby! Restaurant, convenience store, tubing down the river and only 2 miles from Tamarac Wildlife Refuge!

**Additional Details:**

Year Built	2002
Lot Acres	2.29
Lot Dimensions	IRR
Garage Stalls	2
School District	23
Taxes	\$3,905
Taxes with Assessments	\$3,970
Tax Year	2023

**Additional Features:**

**Basement:** Finished **Fuel:** Propane **Garage:** 2 **Heat:** Forced Air **Sewer:** Septic System Compliant - Yes **Water:** Well **Air Conditioning:** Central Air

**Driving Directions:**

From Detroit Lakes, go E on MN-34, Turn left onto Co Hwy 29 for 2.1 miles, Destination will be on the left



Listed By:  
RE/MAX LAKES REGION

Affinity Real Estate Inc. participates in the Regional Multiple Listing Service of Minnesota, Inc Broker Reciprocity (sm) program, allowing us to display other broker's listings on our website. All properties are subject to prior sale, change or withdrawal.



**Call Affinity Real Estate**

**218-237-3333**

**info@affinityrealestate.com**



**Affinity Real Estate - 600 Park Avenue South - Park Rapids MN 56470**



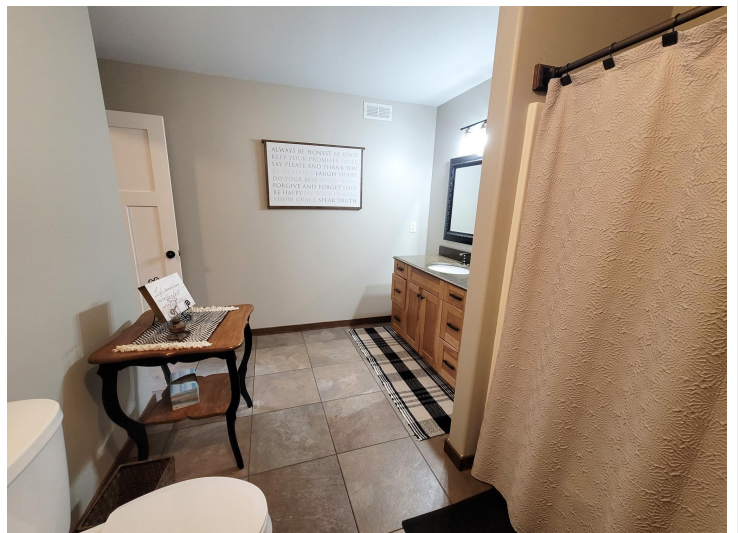


website: [www.AffinityRealEstate.com](http://www.AffinityRealEstate.com) | email: [info@affinityrealestate.com](mailto:info@affinityrealestate.com) | office: 218-237-3333 | fax: 218-237-3377



**\$649,900**  
 MLS 6486070 Residential  
 20244 County Highway 29  
 Rochert MN 56578





website: [www.AffinityRealEstate.com](http://www.AffinityRealEstate.com) | email: [info@affinityrealestate.com](mailto:info@affinityrealestate.com) | office: 218-237-3333 | fax: 218-237-3377

**Affinity**  
REAL ESTATE INC

**\$649,900**  
MLS 6486070 Residential  
20244 County Highway 29  
Rochert MN 56578





website: [www.AffinityRealEstate.com](http://www.AffinityRealEstate.com) | email: [info@affinityrealestate.com](mailto:info@affinityrealestate.com) | office: 218-237-3333 | fax: 218-237-3377



**\$649,900**  
 MLS 6486070 Residential  
 20244 County Highway 29  
 Rochert MN 56578



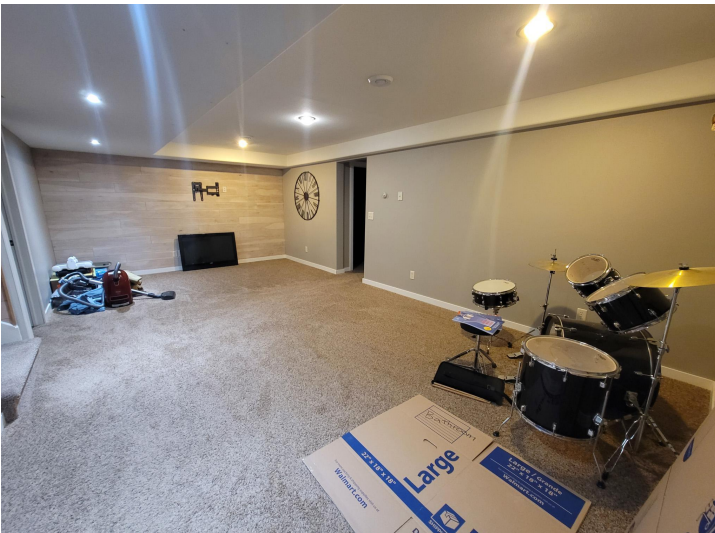


website: [www.AffinityRealEstate.com](http://www.AffinityRealEstate.com) | email: [info@affinityrealestate.com](mailto:info@affinityrealestate.com) | office: 218-237-3333 | fax: 218-237-3377

**Affinity**  
REAL ESTATE INC

**\$649,900**  
MLS 6486070 Residential  
20244 County Highway 29  
Rochert MN 56578





website: [www.AffinityRealEstate.com](http://www.AffinityRealEstate.com) | email: [info@affinityrealestate.com](mailto:info@affinityrealestate.com) | office: 218-237-3333 | fax: 218-237-3377

**Affinity**  
REAL ESTATE INC

**\$649,900**  
MLS 6486070 Residential  
20244 County Highway 29  
Rochert MN 56578





website: [www.AffinityRealEstate.com](http://www.AffinityRealEstate.com) | email: [info@affinityrealestate.com](mailto:info@affinityrealestate.com) | office: 218-237-3333 | fax: 218-237-3377

**Affinity**  
REAL ESTATE INC

**\$649,900**  
MLS 6486070 Residential  
20244 County Highway 29  
Rochert MN 56578





website: [www.AffinityRealEstate.com](http://www.AffinityRealEstate.com) | email: [info@affinityrealestate.com](mailto:info@affinityrealestate.com) | office: 218-237-3333 | fax: 218-237-3377



**\$649,900**  
MLS 6486070 Residential  
20244 County Highway 29  
Rochert MN 56578





website: [www.AffinityRealEstate.com](http://www.AffinityRealEstate.com) | email: [info@affinityrealestate.com](mailto:info@affinityrealestate.com) | office: 218-237-3333 | fax:218-237-3377



**\$649,900**

MLS 6486070 Residential  
20244 County Highway 29  
Rochert MN 56578