



MLS 6486094 Land

**\$250,000**

0.65 Acres  
Raw Land

TBD Lakeside Dr  
Perham MN 56573

Status: Active

**Description:**

The lot is 0.653 acres and is zoned for commercial use. No buildings are currently on the lot, allowing for a blank slate for any potential business owner to design their own space. Strategically positioned on a high-traffic county road. A new development is only a few blocks away.

**Additional Details:**

Lot Acres	0.65
Lot Dimensions	184 x 179
School District	549
Taxes	\$328
Taxes with Assessments	\$328
Tax Year	2023

**Additional Features:**

**Driving Directions:**

North on 51 out of Perham.



Listed By:  
eXp Realty

Affinity Real Estate Inc. participates in the Regional Multiple Listing Service of Minnesota, Inc Broker Reciprocity (sm) program, allowing us to display other broker's listings on our website. All properties are subject to prior sale, change or withdrawal.



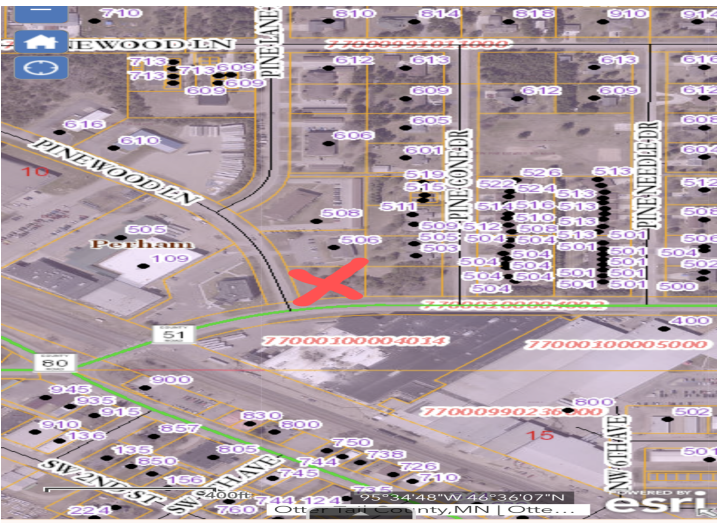
Call Affinity Real Estate

**218-237-3333**

[info@affinityrealestate.com](mailto:info@affinityrealestate.com)



Affinity Real Estate - 600 Park Avenue South - Park Rapids MN 56470



website: [www.AffinityRealEstate.com](http://www.AffinityRealEstate.com) | email: [info@affinityrealestate.com](mailto:info@affinityrealestate.com) | office: 218-237-3333 | fax: 218-237-3377



**\$250,000**  
MLS 6486094 Land  
TBD Lakeside Dr  
Perham MN 56573



website: [www.AffinityRealEstate.com](http://www.AffinityRealEstate.com) | email: [info@affinityrealestate.com](mailto:info@affinityrealestate.com) | office: 218-237-3333 | fax:218-237-3377



**\$250,000**  
MLS 6486094 Land  
TBD Lakeside Dr  
Perham MN 56573



website: [www.AffinityRealEstate.com](http://www.AffinityRealEstate.com) | email: [info@affinityrealestate.com](mailto:info@affinityrealestate.com) | office: 218-237-3333 | fax:218-237-3377



**\$250,000**  
MLS 6486094 Land  
TBD Lakeside Dr  
Perham MN 56573