

MLS 6487121 Lake Land

\$18,500

Description:

A great building lot with the amenities of Hirsch Towering Pines and the shared 211' of frontage on Spider Lake. This lot offers great road access and is ready for you to build on.

Additional Details:

Lot Acres	0.41
Lot Dimensions	120x150x120x150
School District	308
Taxes	\$140
Taxes with Assessments	\$140
Tax Year	2023

Additional Features:

Driving Directions:

From 34/71 in Park Rapids, East on 34 to Nevis. North of Nevis on County 2, left on Harley Dr. to 1st lot on left.



Listed By:
Wolff & Simon Real Estate

Affinity Real Estate Inc. participates in the Regional Multiple Listing Service of Minnesota, Inc Broker Reciprocity (sm) program, allowing us to display other broker's listings on our website. All properties are subject to prior sale, change or withdrawal.



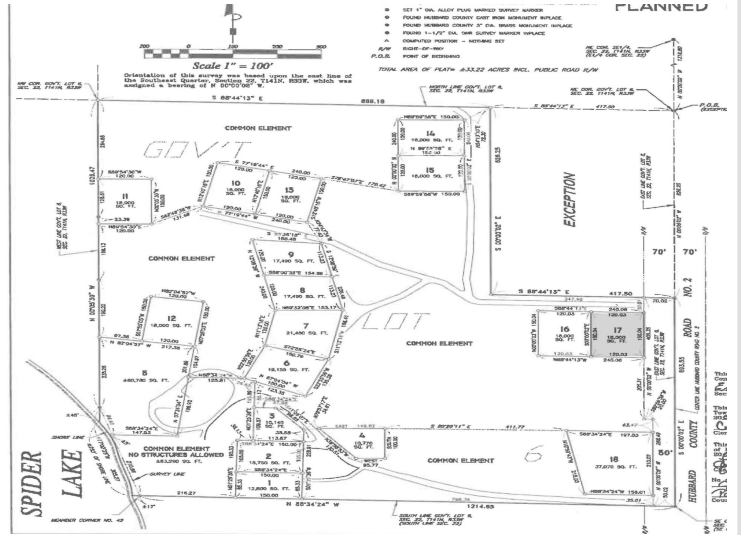
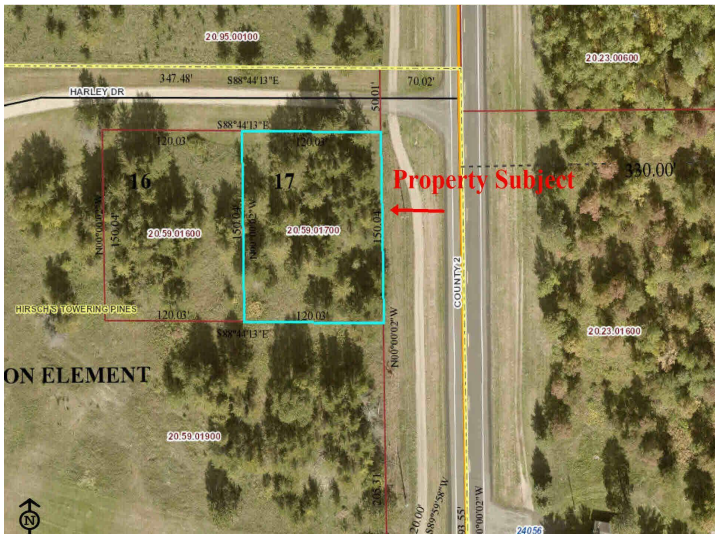
Call Affinity Real Estate

218-237-3333

info@affinityrealestate.com



Affinity Real Estate - 600 Park Avenue South - Park Rapids MN 56470



website: www.AffinityRealEstate.com | email: info@affinityrealestate.com | office: 218-237-3333 | fax: 218-237-3377



\$18,500
 MLS 6487121 Lake Land
 TBD Harley Dr. Lot 17
 Nevis MN 56467