



MLS 6487529 Lake Land

\$450,000

Description:

Diversify your land portfolio with an intricate weave of woods, waterways and trails near the basin of Little Mantrap. Winter greets each morning with frosty pine trees and an otherworldly silence in this healthy, untouched environment. Access the Little Mantrap Lake system via your own private lake, and spend days fishing and camping at the screened gazebo before finishing your grand endeavors, whatever they be. This property has the room for it. Purchase even more neighboring land lots for an epic sprawl of nature trails, streams and lakes in this Northern Minnesota pocket of enchantment and solitude.

Additional Details:

Lot Acres	97.7
Lot Dimensions	Irregular
School District	309
Taxes	(unreported)
Taxes with Assessments	(unreported)
Tax Year	2024

Additional Features:

Driving Directions:

From U.S. Hwy 71, go west on County 46 for 2 miles, turn north onto Brietbach Road & go one mile. Take right hand fork. Follow arrow sign.



Listed By:
Your Home Sold Guaranteed Realty Exclusive

Affinity Real Estate Inc. participates in the Regional Multiple Listing Service of Minnesota, Inc Broker Reciprocity (sm) program, allowing us to display other broker's listings on our website. All properties are subject to prior sale, change or withdrawal.



Call Affinity Real Estate

218-237-3333

info@affinityrealestate.com



Affinity Real Estate - 600 Park Avenue South - Park Rapids MN 56470



website: www.AffinityRealEstate.com | email: info@affinityrealestate.com | office: 218-237-3333 | fax:218-237-3377



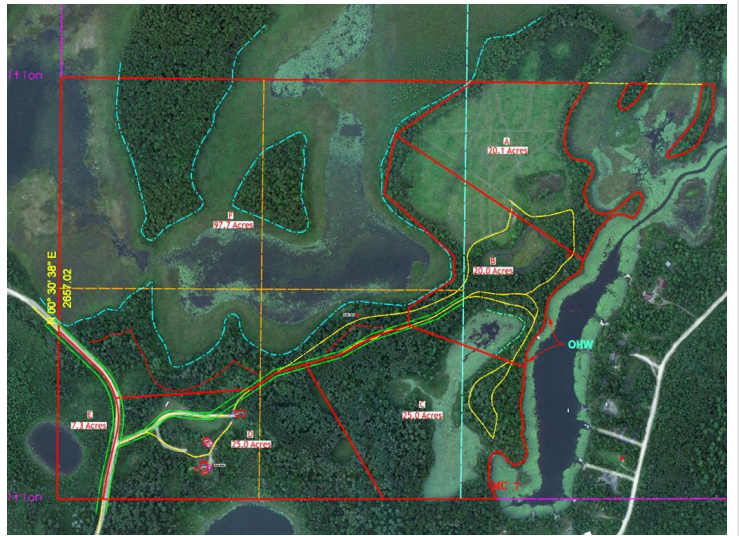
\$450,000
MLS 6487529 Lake Land
Tract F Brietbach Road
Park Rapids MN 56470



website: www.AffinityRealEstate.com | email: info@affinityrealestate.com | office: 218-237-3333 | fax: 218-237-3377



\$450,000
MLS 6487529 Lake Land
Tract F Brietbach Road
Park Rapids MN 56470



website: www.AffinityRealEstate.com | email: info@affinityrealestate.com | office: 218-237-3333 | fax:218-237-3377



\$450,000
MLS 6487529 Lake Land
Tract F Brietbach Road
Park Rapids MN 56470



website: www.AffinityRealEstate.com | email: info@affinityrealestate.com | office: 218-237-3333 | fax:218-237-3377



\$450,000
MLS 6487529 Lake Land
Tract F Brietbach Road
Park Rapids MN 56470