



MLS 6487532 Lake Land

**\$129,000**

**Description:**

Nothing represents Minnesota landscape better than this picturesque plot in the north woods of rural Park Rapids. Construct your dream log cabin in the forest and enjoy a private pond. Add to your endeavors with other available lots that are adjacent and connected to Little Mantrap Lake. Few travelers pass this humble yet lovely gravel road in the woods that provides stunning scenery any time of the year.

**Additional Details:**

Lot Acres	7.3
Lot Dimensions	Irregular
School District	309
Taxes	(unreported)
Taxes with Assessments	(unreported)
Tax Year	2024

**Additional Features:**

**Driving Directions:**

From U.S. Hwy 71, go west on County 46 for 2 miles, turn north onto Brietbach Road & go one mile. Take right hand fork. Follow arrow sign.



Listed By:  
Your Home Sold Guaranteed Realty Exclusive

Affinity Real Estate Inc. participates in the Regional Multiple Listing Service of Minnesota, Inc Broker Reciprocity (sm) program, allowing us to display other broker's listings on our website. All properties are subject to prior sale, change or withdrawal.



**Call Affinity Real Estate**

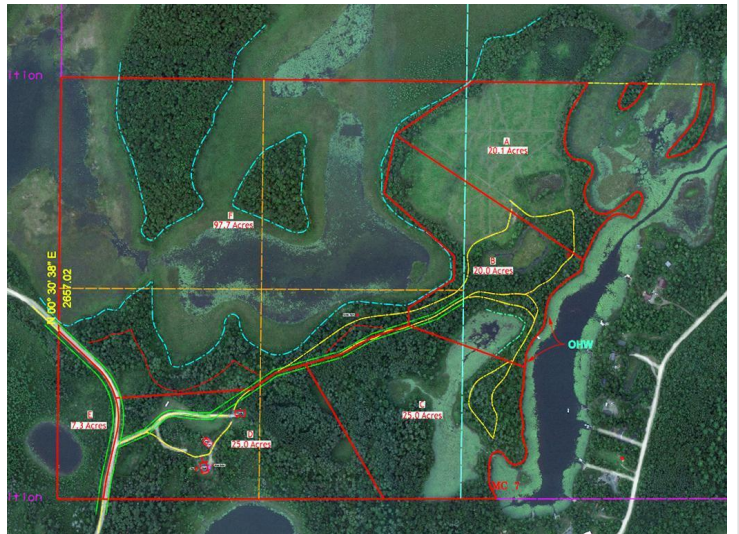
**218-237-3333**

**info@affinityrealestate.com**



**Affinity Real Estate - 600 Park Avenue South - Park Rapids MN 56470**





website: [www.AffinityRealEstate.com](http://www.AffinityRealEstate.com) | email: [info@affinityrealestate.com](mailto:info@affinityrealestate.com) | office: 218-237-3333 | fax: 218-237-3377



**\$129,000**  
 MLS 6487532 Lake Land  
 Tract E Brietbach Road  
 Park Rapids MN 56470





website: [www.AffinityRealEstate.com](http://www.AffinityRealEstate.com) | email: [info@affinityrealestate.com](mailto:info@affinityrealestate.com) | office: 218-237-3333 | fax: 218-237-3377



**\$129,000**  
MLS 6487532 Lake Land  
Tract E Brietbach Road  
Park Rapids MN 56470