



MLS 6487636 Residential

\$184,000

1,894 sq ft
4 bedrooms
2 baths

409 2nd Avenue
Bertha MN 56437

Status: Active

Description:

A home with its own unique character. This home features tall main floor ceilings, Huge enclosed wrap around front and side porch, 4 large upper level bedrooms with upper level full bath and main floor half bath. Some updates include freshly painted interior, all new flooring throughout. Kitchen has new granite counter tops, sink, faucet, backsplash, new added dishwasher and cooktop. Exterior was also painted with a new look. Many new updates making this home move in ready. This is a Fannie Mae HomePath Property.

Additional Details:

Year Built	1908
Lot Acres	0.23
Lot Dimensions	90 x 110 x 90 x 110
Garage Stalls	3
School District	786
Taxes	\$1,278
Taxes with Assessments	\$1,592
Tax Year	2023

Additional Features:

Basement: Other **Fuel:** Natural Gas **Garage:** 3 **Heat:** Forced Air **Sewer:** City Sewer/Connected **Water:** City Water/Connected **Air Conditioning:** Central Air

Driving Directions:

Main St W to Left onto 2nd Ave to 2nd Ave NW on the corner of 2nd Ave NW and 4th St NW. Corner Lot



Listed By:
ERA Viking Realty

Affinity Real Estate Inc. participates in the Regional Multiple Listing Service of Minnesota, Inc Broker Reciprocity (sm) program, allowing us to display other broker's listings on our website. All properties are subject to prior sale, change or withdrawal.



Call Affinity Real Estate

218-237-3333

info@affinityrealestate.com



Affinity Real Estate - 600 Park Avenue South - Park Rapids MN 56470



website: www.AffinityRealEstate.com | email: info@affinityrealestate.com | office: 218-237-3333 | fax: 218-237-3377



\$184,000
 MLS 6487636 Residential
 409 2nd Avenue
 Bertha MN 56437



website: www.AffinityRealEstate.com | email: info@affinityrealestate.com | office: 218-237-3333 | fax: 218-237-3377



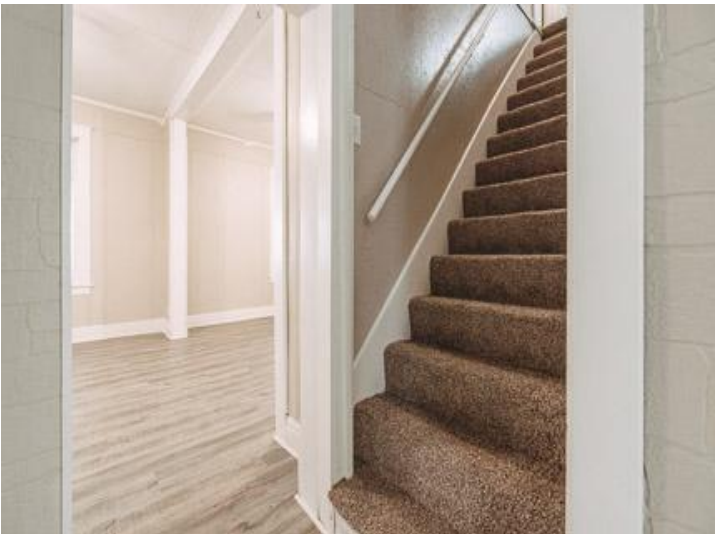
\$184,000
MLS 6487636 Residential
409 2nd Avenue
Bertha MN 56437



website: www.AffinityRealEstate.com | email: info@affinityrealestate.com | office: 218-237-3333 | fax: 218-237-3377



\$184,000
MLS 6487636 Residential
409 2nd Avenue
Bertha MN 56437



website: www.AffinityRealEstate.com | email: info@affinityrealestate.com | office: 218-237-3333 | fax: 218-237-3377



\$184,000
MLS 6487636 Residential
409 2nd Avenue
Bertha MN 56437



website: www.AffinityRealEstate.com | email: info@affinityrealestate.com | office: 218-237-3333 | fax: 218-237-3377



\$184,000
MLS 6487636 Residential
409 2nd Avenue
Bertha MN 56437



website: www.AffinityRealEstate.com | email: info@affinityrealestate.com | office: 218-237-3333 | fax: 218-237-3377



\$184,000
MLS 6487636 Residential
409 2nd Avenue
Bertha MN 56437



website: www.AffinityRealEstate.com | email: info@affinityrealestate.com | office: 218-237-3333 | fax: 218-237-3377



\$184,000
MLS 6487636 Residential
409 2nd Avenue
Bertha MN 56437