



©2022 MIDWEST MN MLS



MLS 6488461 Land

\$65,000

2.61 Acres
Subdivided

24011 Cherry Hill Drive
Detroit Lakes MN 56501

Status: Pending

Description:

Beautiful private views with easy access to highway 10 - Located on the west side of long Lake this 2.61 acre lot (approx) has been surveyed and split off, ready for a new owner. Build your dream home just minutes from down town Detroit Lakes and convenient city amenities or a quick commute to Fargo/Moorhead on a cozy quiet, gorgeous, paved city road, nestled between Long Lake residents, Concordia College land used for research and Minnesota DNR/State land on the shores of Long Lake. Minimal building restrictions, does not allow mobile homes. Covenants do allow for horses/pasture use and so much more. View the property and request survey and covenant information today! Ask about neighboring lot for sale if you are looking for a larger chunk of land that could offer more acreage.

Additional Details:

Lot Acres	2.61
Lot Dimensions	irr
School District	22
Taxes	\$396
Taxes with Assessments	\$396
Tax Year	2023

Additional Features:

Driving Directions:

Highway 10 to west long lake road to cherry hill drive - property on the right side.



Listed By:
The Real Estate Company of Detroit Lakes

Affinity Real Estate Inc. participates in the Regional Multiple Listing Service of Minnesota, Inc Broker Reciprocity (sm) program, allowing us to display other broker's listings on our website. All properties are subject to prior sale, change or withdrawal.



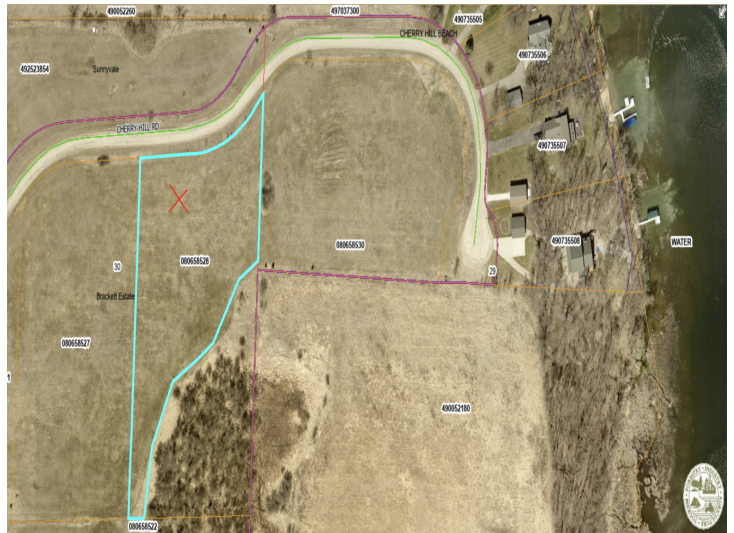
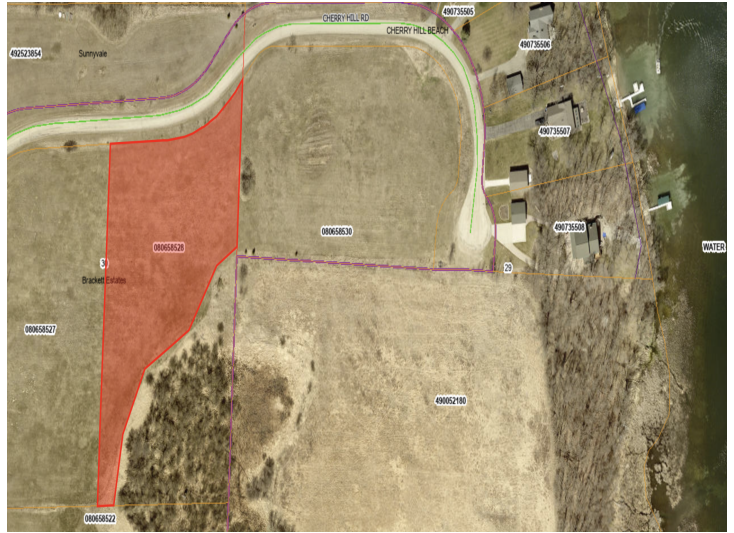
Call Affinity Real Estate

218-237-3333

info@affinityrealestate.com



Affinity Real Estate - 600 Park Avenue South - Park Rapids MN 56470



website: www.AffinityRealEstate.com | email: info@affinityrealestate.com | office: 218-237-3333 | fax: 218-237-3377



\$65,000
 MLS 6488461 Land
 24011 Cherry Hill Drive
 Detroit Lakes MN 56501