



MLS 6488469 Lake Land

\$119,900

Description:

Situated just minutes away from Longville, this property provides easy access to all the amenities of town while offering proximity to the trail system for exhilarating snowmobiling and ATV riding experiences. Delight in the convenience of a deep drilled well, holding tank, and power already in place, ensuring a hassle-free transition to your new home. Additionally, a well-appointed 2010 Gulf camper trailer complete with a deck and screen porch awaits your relaxation. For all your storage requirements, two separate shipping containers are at your disposal. Take advantage of the lake access, conveniently granted through a 12' easement, allowing you to indulge in fishing and boating adventures on the picturesque Little Boy & Wabedo chain. As an added bonus, the lot borders public land, presenting excellent opportunities for hunting enthusiasts. Embrace the tranquility and endless possibilities this remarkable property on a 1.9 acre wooded lot.

Additional Details:

Lot Acres	1.9
Lot Dimensions	148x452x180x456
School District	118
Taxes	\$300
Taxes with Assessments	\$300
Tax Year	2024

Additional Features:

Driving Directions:

From Longville - Go E on Cty Rd 7. Turn right onto Cty Rd 54 NE for 3.3 miles, to the subject property.



Listed By:
Heartland Real Estate

Affinity Real Estate Inc. participates in the Regional Multiple Listing Service of Minnesota, Inc Broker Reciprocity (sm) program, allowing us to display other broker's listings on our website. All properties are subject to prior sale, change or withdrawal.



Call Affinity Real Estate

218-237-3333

info@affinityrealestate.com



Affinity Real Estate - 600 Park Avenue South - Park Rapids MN 56470



website: www.AffinityRealEstate.com | email: info@affinityrealestate.com | office: 218-237-3333 | fax: 218-237-3377

Affinity
REAL ESTATE INC

\$119,900
MLS 6488469 Lake Land
3689 County 54
Longville MN 56655



website: www.AffinityRealEstate.com | email: info@affinityrealestate.com | office: 218-237-3333 | fax: 218-237-3377



\$119,900
 MLS 6488469 Lake Land
 3689 County 54
 Longville MN 56655



website: www.AffinityRealEstate.com | email: info@affinityrealestate.com | office: 218-237-3333 | fax: 218-237-3377



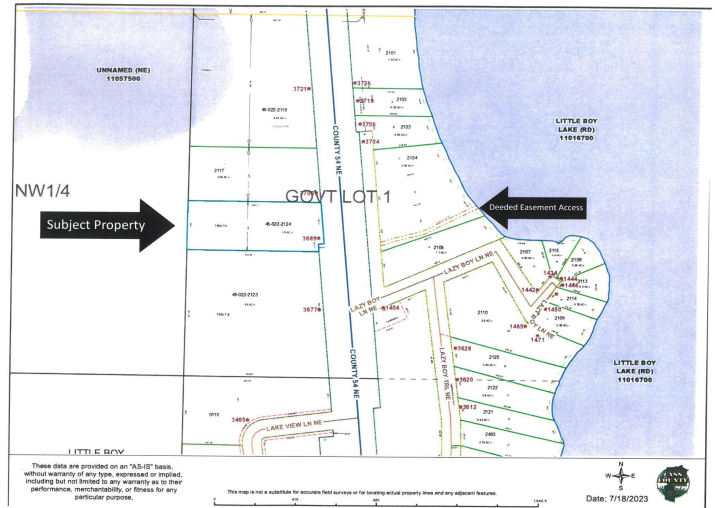
\$119,900
 MLS 6488469 Lake Land
 3689 County 54
 Longville MN 56655



website: www.AffinityRealEstate.com | email: info@affinityrealestate.com | office: 218-237-3333 | fax: 218-237-3377



\$119,900
MLS 6488469 Lake Land
3689 County 54
Longville MN 56655



website: www.AffinityRealEstate.com | email: info@affinityrealestate.com | office: 218-237-3333 | fax: 218-237-3377



\$119,900
 MLS 6488469 Lake Land
 3689 County 54
 Longville MN 56655