

Customized Thomas Allen
Homes - Serenity II w/4th Stall
Garage, Front Option 2



MLS 6488506 Lake Home

\$710,000

2,230 sq ft
4 bedrooms
3 baths

8038 Lost Lake Road
Nisswa MN 56468

Waterfront: Spider Lake (Lake
Shore City)

Status: Closed

Description:

NEW 4bd/3ba SERENITY II at Spider Lake Preserve, a Maintenance Free Community on the Gull Lake Chain. This is 3rd lake home being constructed. Model Home is @ 8038 Lost Lake Rd #120. 3 lots are spoken for, another is reserved which leaves 5 lots for consideration. This community is a small & private single-family lake home community in the City of Lake Shore. This 35-acre community is nestled amongst Lost Lake Lodge, Causeway on Gull, Bar Harbor, Zorbaz, golf courses, and so much more. This private community has its own dock area, lake side patio and firepit area, pickleball court, private crushed granite path system and fine homes built by Thomas Allen Homes. This 4bd/3ba starts at \$599k. This particular listing priced with optional sunroom, bonus config as family room w/custom wet-bar, custom 4 stall garage, patio, white custom cabinetry, flooring upgrade & more. Great private master suite and vaulted main area. Now's the time to secure your Gull Lake enjoyment in 2024!

Additional Details:

Year Built	2024
Lot Acres	0.12
Lot Dimensions	64x83 Build Pad
Garage Stalls	4
School District	181
Taxes	(unreported)
Taxes with Assessments	(unreported)
Tax Year	2024

Additional Features:

Basement: Block, Crawl Space **Fuel:** Natural Gas **Garage:** 4 **Heat:** Forced Air **Sewer:** City Sewer/Connected **Water:** Shared System, Well **Air Conditioning:** Central Air

Driving Directions:

From Highway 371 in Nisswa, take Country Rd 77 West to Zorbaz. Turn Right on Lost Lake Road to Community on your right.



Listed By:
Edina Realty, Inc.

Affinity Real Estate Inc. participates in the Regional Multiple Listing Service of Minnesota, Inc Broker Reciprocity (sm) program, allowing us to display other broker's listings on our website. All properties are subject to prior sale, change or withdrawal.



Call Affinity Real Estate

218-237-3333

info@affinityrealestate.com



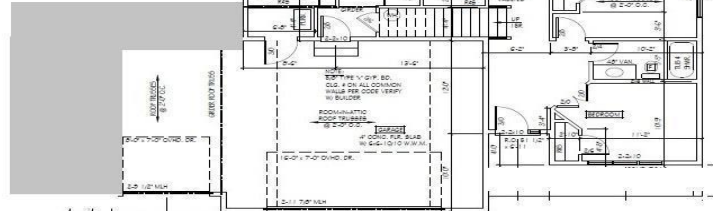
Affinity Real Estate - 600 Park Avenue South - Park Rapids MN 56470

Customized Thomas Allen
Homes - Serenity II w/4th Stall
Garage, Front Option 2

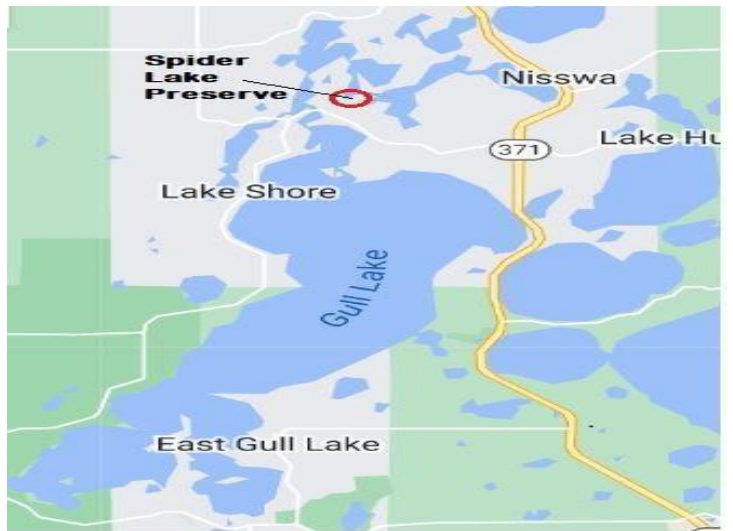
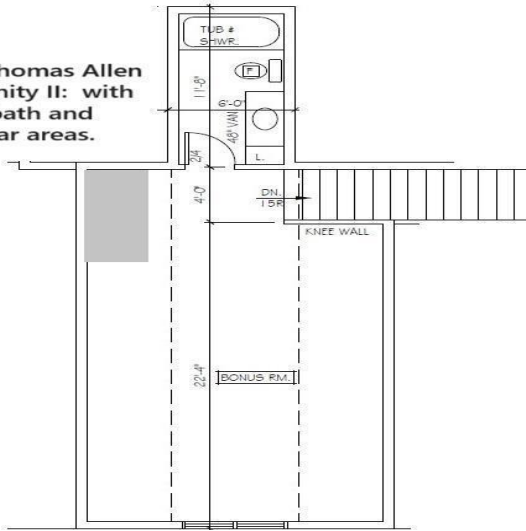


Customized Thomas Allen Homes - Serenity II

- Notable Customizations:**
- Kitchen Cabinets
 - Bonus Room Wet Bar
 - White Cabinetry Throughout
 - 4 stall garage



Customized Thomas Allen
Homes - Serenity II: with
optional 3rd bath and
custom wet-bar areas.



website: www.AffinityRealEstate.com | email: info@affinityrealestate.com | office: 218-237-3333 | fax: 218-237-3377

Affinity
REAL ESTATE INC

\$710,000
MLS 6488506 Lake Home
8038 Lost Lake Road
Nisswa MN 56468



website: www.AffinityRealEstate.com | email: info@affinityrealestate.com | office: 218-237-3333 | fax: 218-237-3377



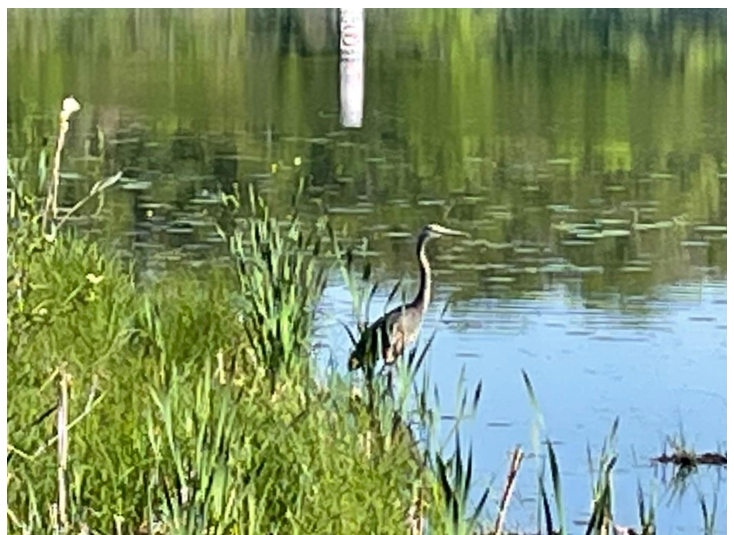
\$710,000
MLS 6488506 Lake Home
8038 Lost Lake Road
Nisswa MN 56468



website: www.AffinityRealEstate.com | email: info@affinityrealestate.com | office: 218-237-3333 | fax: 218-237-3377

Affinity
REAL ESTATE INC

\$710,000
MLS 6488506 Lake Home
8038 Lost Lake Road
Nisswa MN 56468



website: www.AffinityRealEstate.com | email: info@affinityrealestate.com | office: 218-237-3333 | fax: 218-237-3377



\$710,000
 MLS 6488506 Lake Home
 8038 Lost Lake Road
 Nisswa MN 56468



website: www.AffinityRealEstate.com | email: info@affinityrealestate.com | office: 218-237-3333 | fax: 218-237-3377



\$710,000
MLS 6488506 Lake Home
8038 Lost Lake Road
Nisswa MN 56468



website: www.AffinityRealEstate.com | email: info@affinityrealestate.com | office: 218-237-3333 | fax: 218-237-3377



\$710,000
 MLS 6488506 Lake Home
 8038 Lost Lake Road
 Nisswa MN 56468

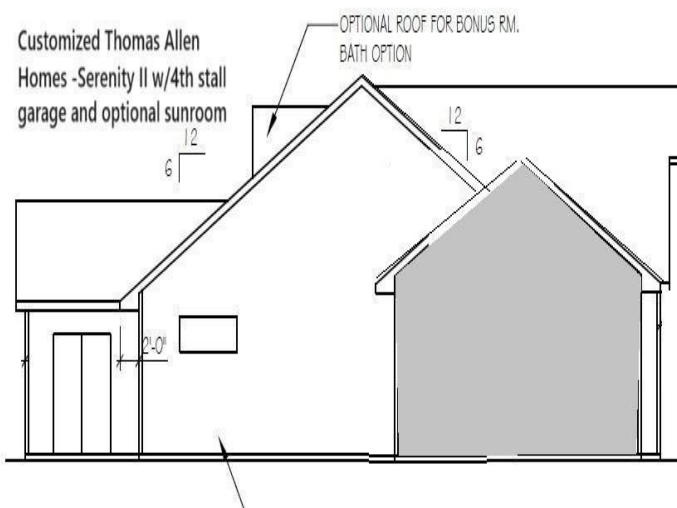
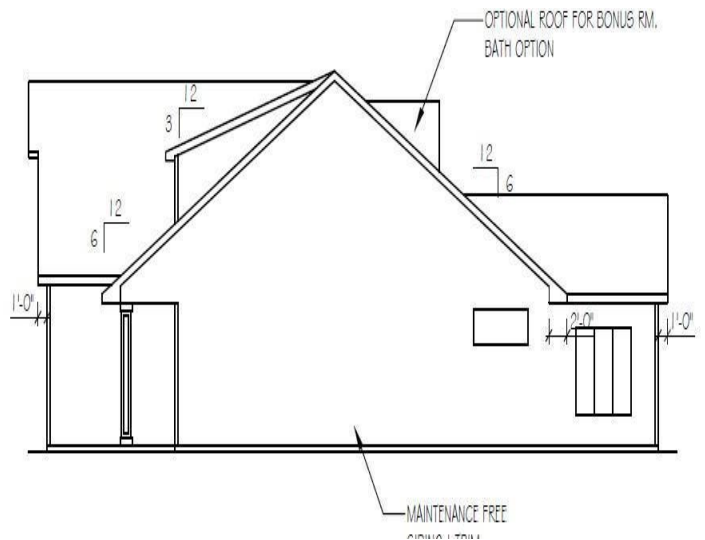
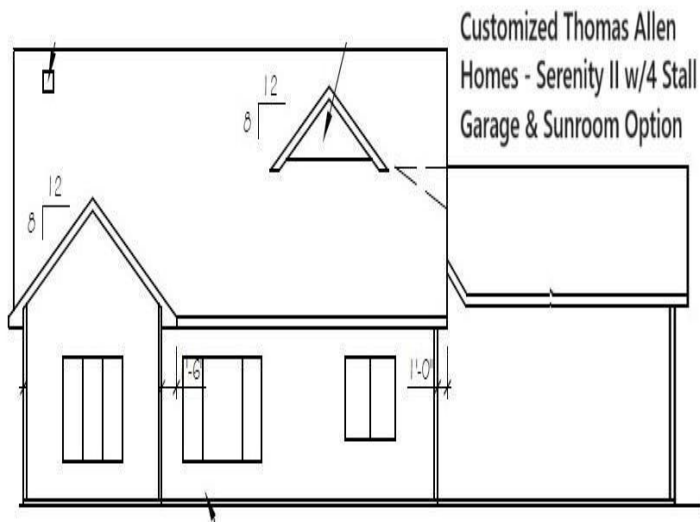
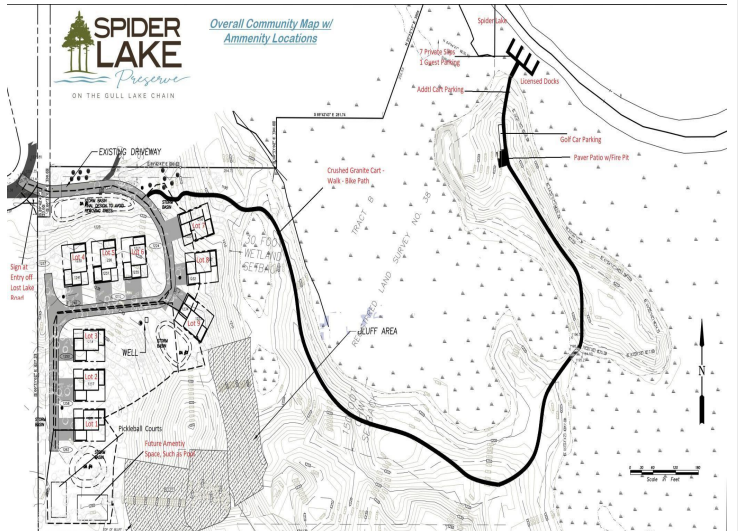
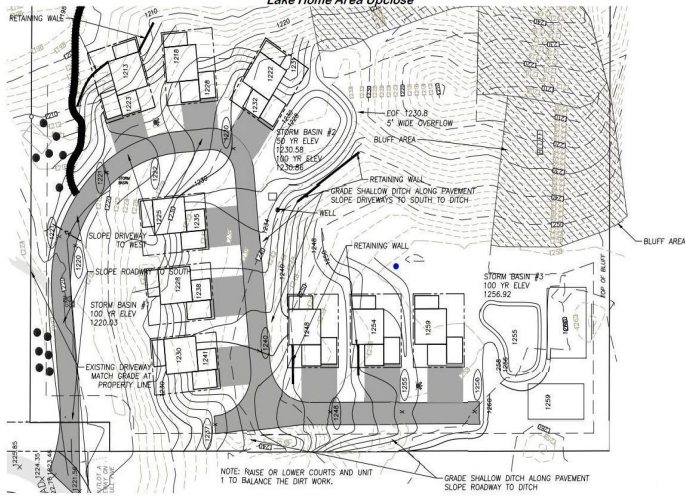


website: www.AffinityRealEstate.com | email: info@affinityrealestate.com | office: 218-237-3333 | fax: 218-237-3377

Affinity
REAL ESTATE INC

\$710,000
MLS 6488506 Lake Home
8038 Lost Lake Road
Nisswa MN 56468

Spider Lake Preserve Lake Home Area Upclose



website: www.AffinityRealEstate.com | email: info@affinityrealestate.com | office: 218-237-3333 | fax: 218-237-3377

Affinity
REAL ESTATE INC

\$710,000
MLS 6488506 Lake Home
8038 Lost Lake Road
Nisswa MN 56468