



MLS 6488740 Residential

\$366,000

2,283 sq ft
3 bedrooms
3 baths

901 Bunchberry Lane
Bemidji MN 56601

Status: Closed

Description:

3+BR, 3BA tastefully remodeled home on a beautiful, near-town wooded lot. This two-story home offers quality, updated finishes, attractive amenities, excellent storage and room to grow. Cozy up by one of the two wood fireplaces on chilly evenings and the heated garage is a plus. John McDonald hardwood floors speak for themselves! Don't miss the chance to experience all this home and neighborhood have to offer!

Additional Details:

Year Built	1969
Lot Acres	0.84
Lot Dimensions	150x260
Garage Stalls	2
School District	31
Taxes	\$2,622
Taxes with Assessments	\$2,622
Tax Year	2023

Additional Features:

Basement: Block, Full, Partially Finished, Storage Space **Fuel:** Electric, Natural Gas, Wood **Garage:** 2 **Heat:** Dual, Forced Air, Fireplace(s), Heat Pump, Humidifier, Wood Stove **Sewer:** Private Sewer, Septic System Compliant - Yes, Tank with Drainage Field **Water:** Submersible - 4 Inch, Drilled, Private, Well **Air Conditioning:** Central Air, Dual, Heat Pump

Driving Directions:

North on Bemidi Ave (Old Hwy 71), left on Bunchberry Ln to #901 on the left.



Listed By:
CENTURY 21 Dickinson Realtors

Affinity Real Estate Inc. participates in the Regional Multiple Listing Service of Minnesota, Inc Broker Reciprocity (sm) program, allowing us to display other broker's listings on our website. All properties are subject to prior sale, change or withdrawal.



Call Affinity Real Estate

218-237-3333

info@affinityrealestate.com



Affinity Real Estate - 600 Park Avenue South - Park Rapids MN 56470



website: www.AffinityRealEstate.com | email: info@affinityrealestate.com | office: 218-237-3333 | fax: 218-237-3377

Affinity
REAL ESTATE INC

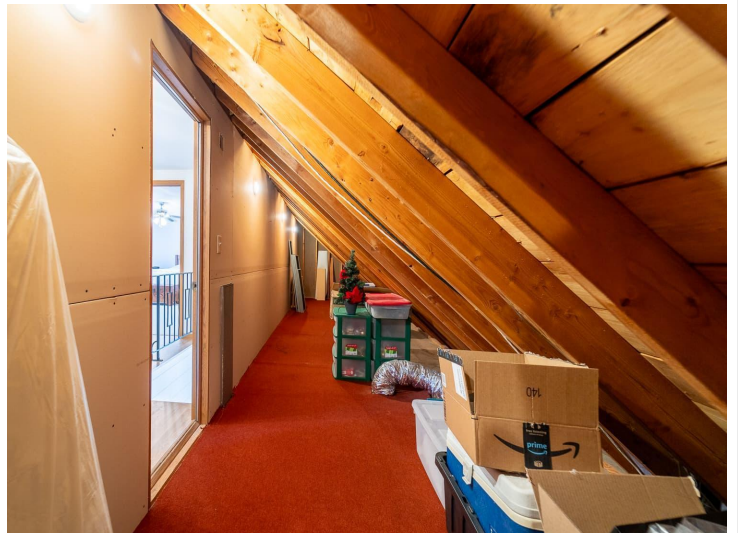
\$366,000
MLS 6488740 Residential
901 Bunchberry Lane
Bemidji MN 56601



website: www.AffinityRealEstate.com | email: info@affinityrealestate.com | office: 218-237-3333 | fax: 218-237-3377

Affinity
REAL ESTATE INC

\$366,000
MLS 6488740 Residential
901 Bunchberry Lane
Bemidji MN 56601



website: www.AffinityRealEstate.com | email: info@affinityrealestate.com | office: 218-237-3333 | fax: 218-237-3377



\$366,000
MLS 6488740 Residential
901 Bunchberry Lane
Bemidji MN 56601



website: www.AffinityRealEstate.com | email: info@affinityrealestate.com | office: 218-237-3333 | fax: 218-237-3377

Affinity
REAL ESTATE INC

\$366,000
MLS 6488740 Residential
901 Bunchberry Lane
Bemidji MN 56601



website: www.AffinityRealEstate.com | email: info@affinityrealestate.com | office: 218-237-3333 | fax: 218-237-3377

Affinity
REAL ESTATE INC

\$366,000
MLS 6488740 Residential
901 Bunchberry Lane
Bemidji MN 56601



website: www.AffinityRealEstate.com | email: info@affinityrealestate.com | office: 218-237-3333 | fax: 218-237-3377



\$366,000
MLS 6488740 Residential
901 Bunchberry Lane
Bemidji MN 56601



website: www.AffinityRealEstate.com | email: info@affinityrealestate.com | office: 218-237-3333 | fax: 218-237-3377

Affinity
REAL ESTATE INC

\$366,000
MLS 6488740 Residential
901 Bunchberry Lane
Bemidji MN 56601



website: www.AffinityRealEstate.com | email: info@affinityrealestate.com | office: 218-237-3333 | fax:218-237-3377



\$366,000
MLS 6488740 Residential
901 Bunchberry Lane
Bemidji MN 56601