



MLS 6488994 Lake Home

**\$399,900**

2,400 sq ft  
3 bedrooms  
3 baths

6020 Shady Lane  
Bemidji MN 56601

Waterfront: Bemidji (main lake)

Status: Active

#### Description:

Beautiful Lake Bemidji west side access via the coveted Lagoon-A-Beach neighborhood. Enjoy a protected channel access to the lake by boat and enjoy lakeside dining, the Bemidji Town and Country Golf Club, and Lake Bemidji State Park all just a few minutes away. The location also provides easy access to the nearby bike trail. The main level features 3BR/2BA, cozy kitchen, spacious dining, fireplace, and both living room and family room with panoramic views of the channel. Basement includes a bathroom, possible 4th bedroom (windows but not legal egress), family room with fireplace, laundry, and large workshop/storage room. An attached garage with access to the basement, paved driveway, and a level yard to the channel complete this waterfront property.

Come enjoy lake life, Lake Bemidji, and all the growing Bemidji area has to offer! Realtor note: The property is being sold "as is".

#### Additional Details:

Year Built	1974
Lot Acres	0.46
Lot Dimensions	100x150
Garage Stalls	2
School District	31
Taxes	\$5,448
Taxes with Assessments	\$5,448
Tax Year	2024

#### Additional Features:

**Basement:** Block, Partially Finished **Fuel:** Electric, Natural Gas, Wood **Garage:** 2 **Heat:** Baseboard, Forced Air, Fireplace(s), Other **Sewer:** City Sewer/Connected **Water:** City Water/Connected **Air Conditioning:** Central Air

#### Driving Directions:

North on Birchmont Dr NE, right on Shady Ln NE, #6020 on the left.



Listed By:  
CENTURY 21 Dickinson Realtors

Affinity Real Estate Inc. participates in the Regional Multiple Listing Service of Minnesota, Inc Broker Reciprocity (sm) program, allowing us to display other broker's listings on our website. All properties are subject to prior sale, change or withdrawal.



Call Affinity Real Estate

**218-237-3333**

[info@affinityrealestate.com](mailto:info@affinityrealestate.com)



Affinity Real Estate - 600 Park Avenue South - Park Rapids MN 56470





website: [www.AffinityRealEstate.com](http://www.AffinityRealEstate.com) | email: [info@affinityrealestate.com](mailto:info@affinityrealestate.com) | office: 218-237-3333 | fax: 218-237-3377



**\$399,900**  
MLS 6488994 Lake Home  
6020 Shady Lane  
Bemidji MN 56601



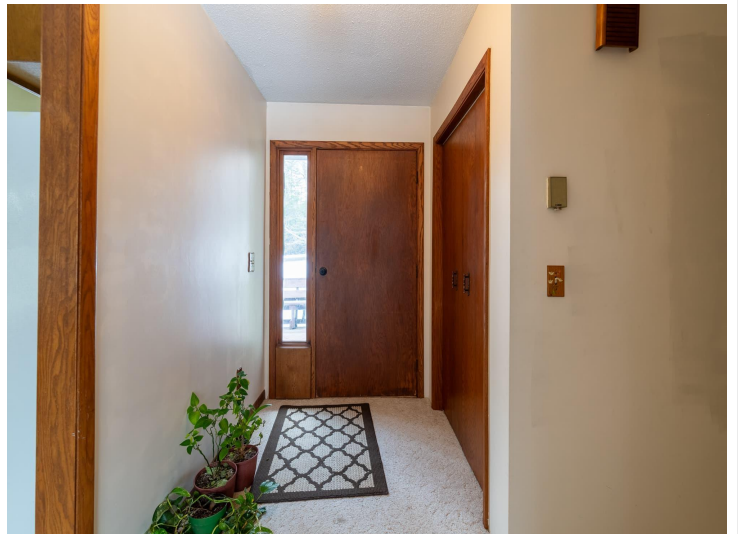


website: [www.AffinityRealEstate.com](http://www.AffinityRealEstate.com) | email: [info@affinityrealestate.com](mailto:info@affinityrealestate.com) | office: 218-237-3333 | fax: 218-237-3377

**Affinity**  
REAL ESTATE INC

**\$399,900**  
MLS 6488994 Lake Home  
6020 Shady Lane  
Bemidji MN 56601





website: [www.AffinityRealEstate.com](http://www.AffinityRealEstate.com) | email: [info@affinityrealestate.com](mailto:info@affinityrealestate.com) | office: 218-237-3333 | fax: 218-237-3377

**Affinity**  
REAL ESTATE INC

**\$399,900**  
MLS 6488994 Lake Home  
6020 Shady Lane  
Bemidji MN 56601





website: [www.AffinityRealEstate.com](http://www.AffinityRealEstate.com) | email: [info@affinityrealestate.com](mailto:info@affinityrealestate.com) | office: 218-237-3333 | fax: 218-237-3377



**\$399,900**  
 MLS 6488994 Lake Home  
 6020 Shady Lane  
 Bemidji MN 56601





website: [www.AffinityRealEstate.com](http://www.AffinityRealEstate.com) | email: [info@affinityrealestate.com](mailto:info@affinityrealestate.com) | office: 218-237-3333 | fax:218-237-3377



**\$399,900**  
MLS 6488994 Lake Home  
6020 Shady Lane  
Bemidji MN 56601