



MLS 6489239 Residential

\$235,000

1,824 sq ft
5 bedrooms
2 baths

1007 5th Street
Bemidji MN 56601

Status: Pending

Description:

This efficient 5-bedroom rambler, nestled at the end of a tranquil town road, invites you to a perfect blend of comfort and convenience. Five bedrooms provide versatility for a ton of sleeping options or a lot of spaces for your hobbies along with work at home options. The kitchen is efficient and the dining area overlooks the fenced in back yard. Enjoy a seamless balance of tranquil living located at the end of a dead end street and the convenience of being located 1 block from Nymore Park where you will find a community garden, tennis court, ice rink and a dedicated dog park. Embrace the modern living of this home and outdoor recreation, making everyday a delightful experience.

Additional Details:

Year Built	1977
Lot Acres	0.26
Lot Dimensions	115x100
Garage Stalls	2
School District	31
Taxes	\$1,906
Taxes with Assessments	\$1,906
Tax Year	2023

Additional Features:

Basement: Block, Egress Window(s), Full **Fuel:** Natural Gas **Garage:** 2 **Heat:** Forced Air **Sewer:** City Sewer/Connected **Water:** City Water/Connected **Air Conditioning:** Central Air

Driving Directions:

East on Roosevelt Road, right on Grant Ave, left on 5th Street SE.



Listed By:
Coldwell Banker Crown Realtors

Affinity Real Estate Inc. participates in the Regional Multiple Listing Service of Minnesota, Inc Broker Reciprocity (sm) program, allowing us to display other broker's listings on our website. All properties are subject to prior sale, change or withdrawal.



Call Affinity Real Estate

218-237-3333

info@affinityrealestate.com



Affinity Real Estate - 600 Park Avenue South - Park Rapids MN 56470



website: www.AffinityRealEstate.com | email: info@affinityrealestate.com | office: 218-237-3333 | fax: 218-237-3377

Affinity
REAL ESTATE INC

\$235,000
MLS 6489239 Residential
1007 5th Street
Bemidji MN 56601



website: www.AffinityRealEstate.com | email: info@affinityrealestate.com | office: 218-237-3333 | fax: 218-237-3377

Affinity
REAL ESTATE INC

\$235,000
MLS 6489239 Residential
1007 5th Street
Bemidji MN 56601



website: www.AffinityRealEstate.com | email: info@affinityrealestate.com | office: 218-237-3333 | fax: 218-237-3377

Affinity
REAL ESTATE INC

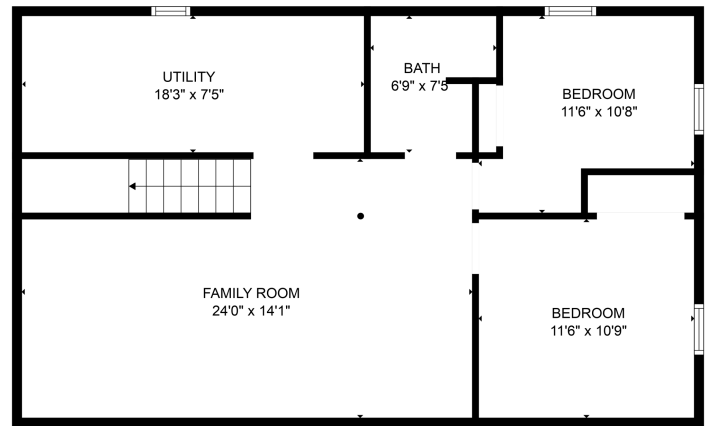
\$235,000
MLS 6489239 Residential
1007 5th Street
Bemidji MN 56601



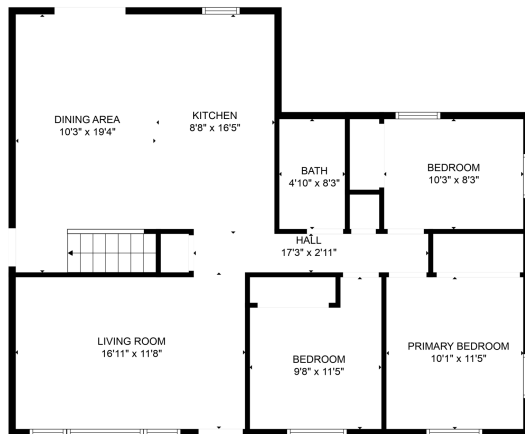
website: www.AffinityRealEstate.com | email: info@affinityrealestate.com | office: 218-237-3333 | fax: 218-237-3377

Affinity
REAL ESTATE INC

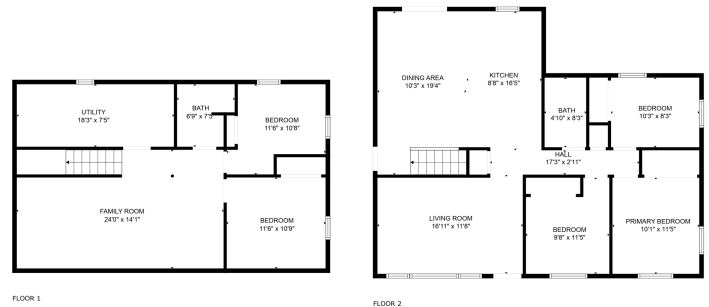
\$235,000
MLS 6489239 Residential
1007 5th Street
Bemidji MN 56601



TOTAL: 1799 sq. ft.
Below Ground: 782 sq. ft. FLOOR 2: 1017 sq. ft.
MEASUREMENTS ARE CALCULATED BY CURBANA TECHNOLOGIES. ROOMS LISTED ARE APPROXIMATE BUT NOT GUARANTEED.



TOTAL: 1799 sq. ft.
Below Ground: 782 sq. ft. FLOOR 2: 1017 sq. ft.
MEASUREMENTS ARE CALCULATED BY CURBANA TECHNOLOGIES. ROOMS LISTED ARE APPROXIMATE BUT NOT GUARANTEED.



FLOOR 1

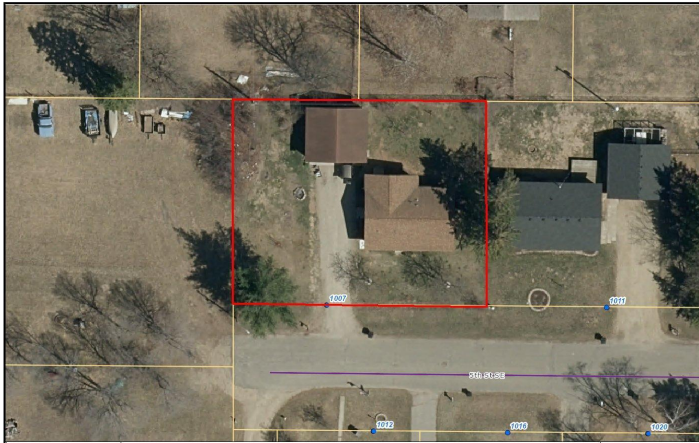
FLOOR 2

TOTAL: 1799 sq. ft.
Below Ground: 782 sq. ft. FLOOR 2: 1017 sq. ft.
MEASUREMENTS ARE CALCULATED BY CURBANA TECHNOLOGIES. ROOMS LISTED ARE APPROXIMATE BUT NOT GUARANTEED.

website: www.AffinityRealEstate.com | email: info@affinityrealestate.com | office: 218-237-3333 | fax: 218-237-3377

Affinity
REAL ESTATE INC

\$235,000
MLS 6489239 Residential
1007 5th Street
Bemidji MN 56601



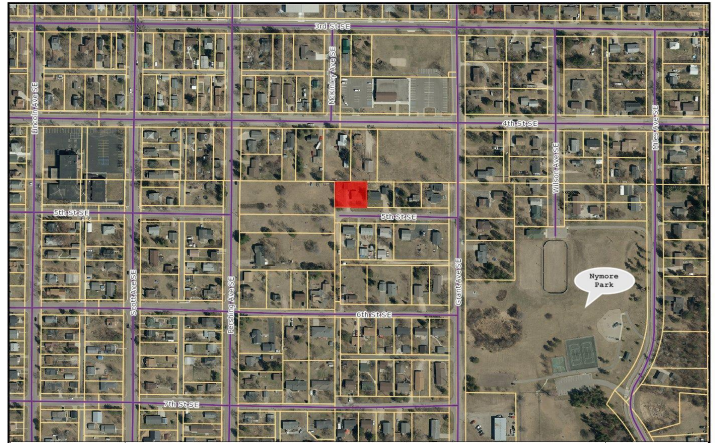
These data are provided on an "AS-IS" basis, without warranty of any type, expressed or implied, including but not limited to any warranty as to their performance, merchantability, or fitness for any particular purpose.

1:528 Date: 2/14/2024

This map is not a substitute for accurate field surveys or for locating actual property lines and any adjacent features.

1007 5th Street SE

Beltrami County Minnesota



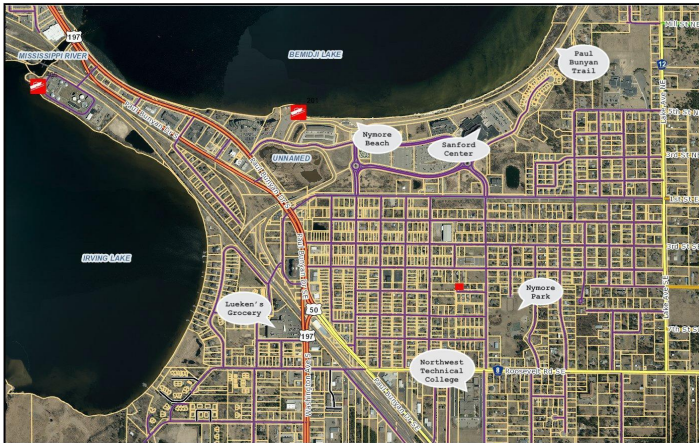
These data are provided on an "AS-IS" basis, without warranty of any type, expressed or implied, including but not limited to any warranty as to their performance, merchantability, or fitness for any particular purpose.

1:4.223 Date: 2/14/2024

This map is not a substitute for accurate field surveys or for locating actual property lines and any adjacent features.

1007 5th Street SE

Beltrami County Minnesota



These data are provided on an "AS-IS" basis, without warranty of any type, expressed or implied, including but not limited to any warranty as to their performance, merchantability, or fitness for any particular purpose.

1:16.892 Date: 2/14/2024

This map is not a substitute for accurate field surveys or for locating actual property lines and any adjacent features.

1007 5th Street SE

Beltrami County Minnesota

website: www.AffinityRealEstate.com | email: info@affinityrealestate.com | office: 218-237-3333 | fax: 218-237-3377



\$235,000
MLS 6489239 Residential
1007 5th Street
Bemidji MN 56601