



MLS 6489405 Commercial

\$499,900

208 Main Avenue
Park Rapids MN 56470

Status: Active

Description:

The Ben Franklin building has been a mainstay in the Park Rapids Area for over 70+ years. The Ben Franklin building features over 14,000 sq. ft., two retail sales floors, and 6 rental units above the main floor. Currently, the building is being operated as a Ben Franklin Retail store. Buyers do have the option to purchase the business and inventory separately if they would like. Call for an appointment today!

Additional Details:

Year Built	1950
Lot Acres	0.16
Lot Dimensions	50x140
School District	309
Taxes	\$8,702
Taxes with Assessments	\$8,702
Tax Year	2023

Additional Features:

Fuel: Natural Gas **Heat:** Boiler **Sewer:** City Sewer/Connected **Water:** City Water/Connected **Air Conditioning:** Central Air

Driving Directions:

From 34/71 in Park Rapids, West on 34 to a left on Main St. S to property on left.



Listed By:
Wolff & Simon Real Estate

Affinity Real Estate Inc. participates in the Regional Multiple Listing Service of Minnesota, Inc Broker Reciprocity (sm) program, allowing us to display other broker's listings on our website. All properties are subject to prior sale, change or withdrawal.



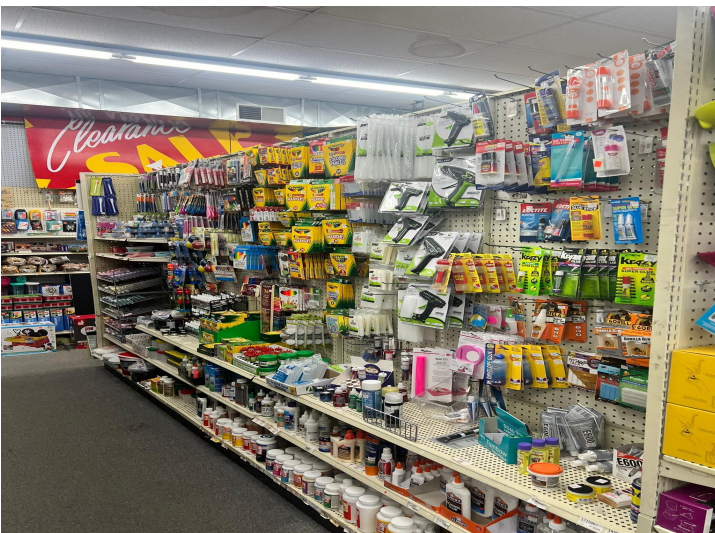
Call Affinity Real Estate

218-237-3333

info@affinityrealestate.com



Affinity Real Estate - 600 Park Avenue South - Park Rapids MN 56470



website: www.AffinityRealEstate.com | email: info@affinityrealestate.com | office: 218-237-3333 | fax: 218-237-3377



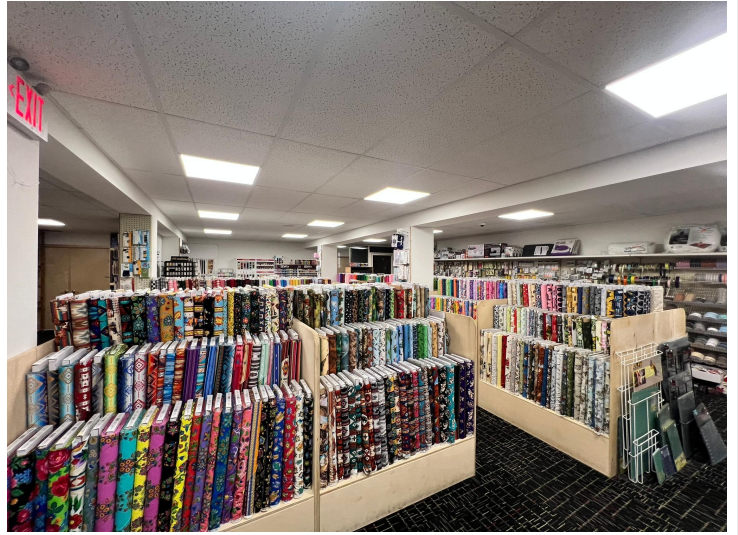
\$499,900
 MLS 6489405 Commercial
 208 Main Avenue
 Park Rapids MN 56470



website: www.AffinityRealEstate.com | email: info@affinityrealestate.com | office: 218-237-3333 | fax: 218-237-3377



\$499,900
 MLS 6489405 Commercial
 208 Main Avenue
 Park Rapids MN 56470



website: www.AffinityRealEstate.com | email: info@affinityrealestate.com | office: 218-237-3333 | fax: 218-237-3377



\$499,900
 MLS 6489405 Commercial
 208 Main Avenue
 Park Rapids MN 56470



website: www.AffinityRealEstate.com | email: info@affinityrealestate.com | office: 218-237-3333 | fax: 218-237-3377



\$499,900
MLS 6489405 Commercial
208 Main Avenue
Park Rapids MN 56470