



MLS 6489745 Residential

**\$324,900**

2,336 sq ft  
3 bedrooms  
2 baths

12576 County Road 1  
Wadena MN 56482

Status: Pending

**Description:**

Gorgeous 3 bedroom, 2 bathroom home with modern finishes throughout. Stainless appliances. Porcelain and ceramic tile flooring. Enjoy an oversized 3 stall garage (32x32) with workshop and additional 30x40 storage shed on 2.87 private acres. Abundant space for hosting friends and family in large family room and paved patio. Main floor laundry and private primary suite. You have to take a look!

**Additional Details:**

Year Built	2005
Lot Acres	2.87
Lot Dimensions	2.87ac
Garage Stalls	3
School District	2155
Taxes	\$3,202
Taxes with Assessments	\$3,202
Tax Year	2024

**Additional Features:**

**Basement:** None **Fuel:** Other, Propane **Garage:** 3 **Heat:** Forced Air, Radiant Floor **Sewer:** Private Sewer **Water:** Private **Air Conditioning:** Central Air

**Driving Directions:**

From Wadena, go South on Hwy 71 3.5 miles - turn left (East) onto Co Rd 1 - go 0.5 miles to property on your left (North).



Listed By:  
Albers Realty

Affinity Real Estate Inc. participates in the Regional Multiple Listing Service of Minnesota, Inc Broker Reciprocity (sm) program, allowing us to display other broker's listings on our website. All properties are subject to prior sale, change or withdrawal.



**Call Affinity Real Estate**

**218-237-3333**

**info@affinityrealestate.com**



**Affinity Real Estate - 600 Park Avenue South - Park Rapids MN 56470**



website: [www.AffinityRealEstate.com](http://www.AffinityRealEstate.com) | email: [info@affinityrealestate.com](mailto:info@affinityrealestate.com) | office: 218-237-3333 | fax:218-237-3377



**\$324,900**  
MLS 6489745 Residential  
12576 County Road 1  
Wadena MN 56482



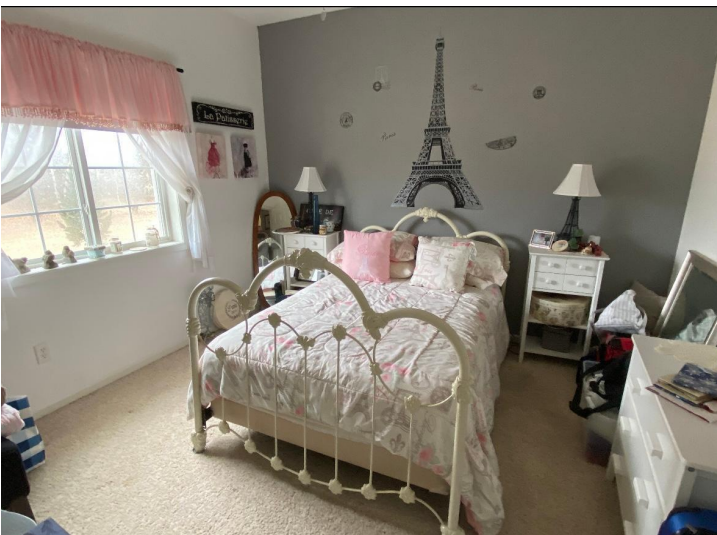


website: [www.AffinityRealEstate.com](http://www.AffinityRealEstate.com) | email: [info@affinityrealestate.com](mailto:info@affinityrealestate.com) | office: 218-237-3333 | fax: 218-237-3377

**Affinity**  
REAL ESTATE INC

**\$324,900**  
MLS 6489745 Residential  
12576 County Road 1  
Wadena MN 56482





website: [www.AffinityRealEstate.com](http://www.AffinityRealEstate.com) | email: [info@affinityrealestate.com](mailto:info@affinityrealestate.com) | office: 218-237-3333 | fax:218-237-3377

**Affinity**  
REAL ESTATE INC

**\$324,900**  
MLS 6489745 Residential  
12576 County Road 1  
Wadena MN 56482





website: [www.AffinityRealEstate.com](http://www.AffinityRealEstate.com) | email: [info@affinityrealestate.com](mailto:info@affinityrealestate.com) | office: 218-237-3333 | fax:218-237-3377



**\$324,900**  
MLS 6489745 Residential  
12576 County Road 1  
Wadena MN 56482