



MLS 6490072 Land

\$125,000

10.09 Acres
Raw Land

XXX Arrowhead Drive
Pine River MN 56474

Status: Active

Description:

Very nice 10 acre palace located in the heart of Lake Country just north of Arrowhead Lake and Upper White Fish. The property has a great location for a walkout, seasonal home, use as a recreational property, etc. There is approximately 3 acres of woods that has a good number of deer and other wildlife. This is a must see property!

Additional Details:

Lot Acres	10.09
Lot Dimensions	329x1336x329x1336
School District	2174
Taxes	\$184
Taxes with Assessments	\$184
Tax Year	2023

Additional Features:

Driving Directions:

From Pine River take County 1 East approximately 9 miles to right on Arrowhead Drive to property on right. From Crosslake take 66 north to County 1, then left to left on Arrowhead Drive.



Listed By:
Edina Realty, Inc.

Affinity Real Estate Inc. participates in the Regional Multiple Listing Service of Minnesota, Inc Broker Reciprocity (sm) program, allowing us to display other broker's listings on our website. All properties are subject to prior sale, change or withdrawal.



Call Affinity Real Estate

218-237-3333

info@affinityrealestate.com



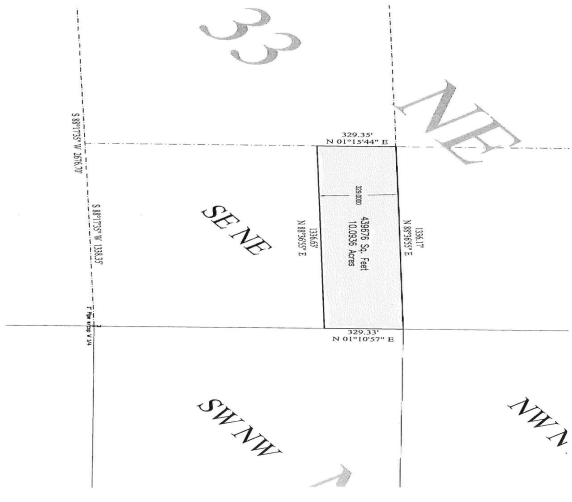
Affinity Real Estate - 600 Park Avenue South - Park Rapids MN 56470



website: www.AffinityRealEstate.com | email: info@affinityrealestate.com | office: 218-237-3333 | fax:218-237-3377



\$125,000
MLS 6490072 Land
XXX Arrowhead Drive
Pine River MN 56474



website: www.AffinityRealEstate.com | email: info@affinityrealestate.com | office: 218-237-3333 | fax:218-237-3377



\$125,000
 MLS 6490072 Land
 XXX Arrowhead Drive
 Pine River MN 56474