



MLS 6490647 Land

**\$105,000**

40 Acres  
Raw Land

TBD State 200  
Bagley MN 56621

Status: Pending

**Description:**

Nestled conveniently off State Highway 200 and in close proximity to the renowned Itasca State Park, this property offers the perfect blend of accessibility and seclusion. As you enter through the gated access, you'll immediately be greeted by the tranquility and beauty of the surroundings. A small 12x24 cabin awaits, providing a cozy retreat after a day of exploration. If you're seeking a weekend getaway from the hustle and bustle of city life, this cabin offers the space to relax and recharge. It has an extensive trail system, inviting you to explore every corner of the land. Whether you're an avid hiker, hunter, or simply enjoy nature walks, you'll find endless opportunities to immerse yourself in the natural beauty that surrounds you. The thousands of acres of state land adjoining the property is an added bonus! Seller is a licensed Real Estate Agent in Minnesota

**Additional Details:**

Lot Acres	40
Lot Dimensions	1742400
School District	162
Taxes	\$244
Taxes with Assessments	\$244
Tax Year	2023

**Additional Features:**

**Driving Directions:**

From Bagley head south on 92 for 18 miles, property on the north side of State 200.



Listed By:  
Whitetail Properties Real

Affinity Real Estate Inc. participates in the Regional Multiple Listing Service of Minnesota, Inc Broker Reciprocity (sm) program, allowing us to display other broker's listings on our website. All properties are subject to prior sale, change or withdrawal.



**Call Affinity Real Estate**

**218-237-3333**

**info@affinityrealestate.com**



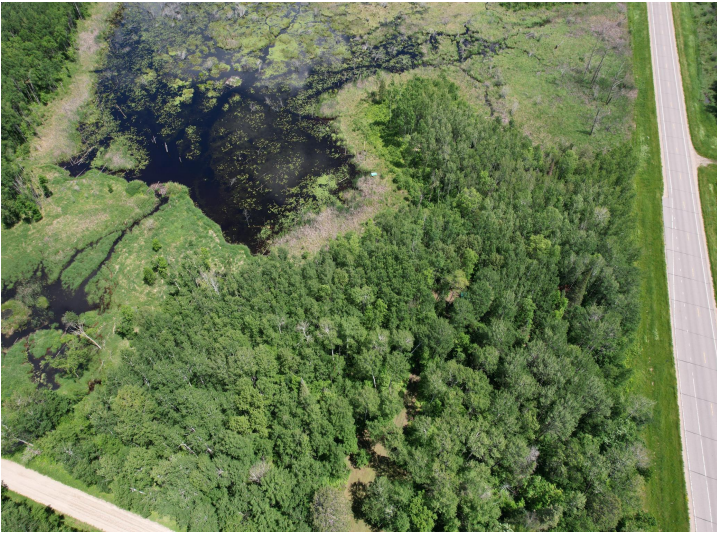
**Affinity Real Estate - 600 Park Avenue South - Park Rapids MN 56470**



website: [www.AffinityRealEstate.com](http://www.AffinityRealEstate.com) | email: [info@affinityrealestate.com](mailto:info@affinityrealestate.com) | office: 218-237-3333 | fax:218-237-3377



**\$105,000**  
MLS 6490647 Land  
TBD State 200  
Bagley MN 56621



website: [www.AffinityRealEstate.com](http://www.AffinityRealEstate.com) | email: [info@affinityrealestate.com](mailto:info@affinityrealestate.com) | office: 218-237-3333 | fax:218-237-3377



**\$105,000**  
MLS 6490647 Land  
TBD State 200  
Bagley MN 56621



website: [www.AffinityRealEstate.com](http://www.AffinityRealEstate.com) | email: [info@affinityrealestate.com](mailto:info@affinityrealestate.com) | office: 218-237-3333 | fax:218-237-3377



**\$105,000**  
MLS 6490647 Land  
TBD State 200  
Bagley MN 56621



website: [www.AffinityRealEstate.com](http://www.AffinityRealEstate.com) | email: [info@affinityrealestate.com](mailto:info@affinityrealestate.com) | office: 218-237-3333 | fax:218-237-3377



**\$105,000**  
MLS 6490647 Land  
TBD State 200  
Bagley MN 56621



website: [www.AffinityRealEstate.com](http://www.AffinityRealEstate.com) | email: [info@affinityrealestate.com](mailto:info@affinityrealestate.com) | office: 218-237-3333 | fax:218-237-3377



**\$105,000**  
MLS 6490647 Land  
TBD State 200  
Bagley MN 56621



website: [www.AffinityRealEstate.com](http://www.AffinityRealEstate.com) | email: [info@affinityrealestate.com](mailto:info@affinityrealestate.com) | office: 218-237-3333 | fax:218-237-3377



**\$105,000**  
MLS 6490647 Land  
TBD State 200  
Bagley MN 56621

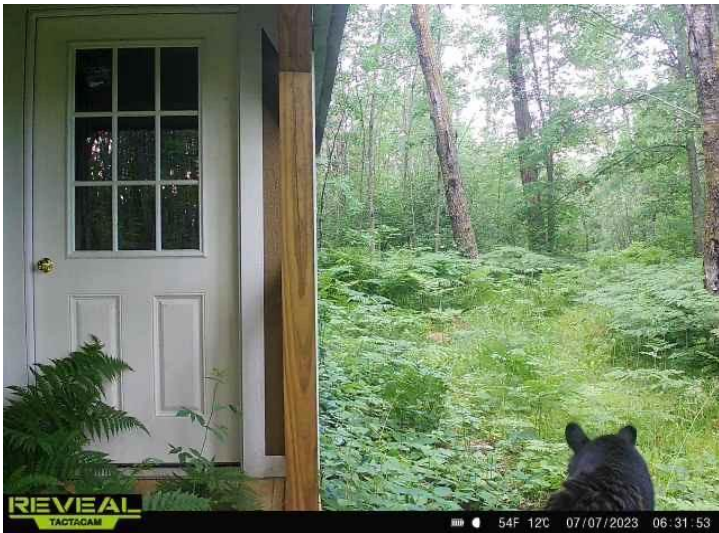
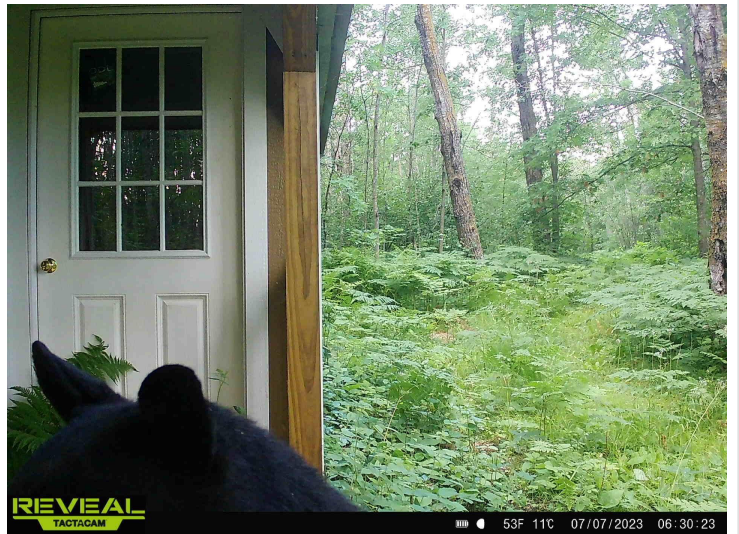


website: [www.AffinityRealEstate.com](http://www.AffinityRealEstate.com) | email: [info@affinityrealestate.com](mailto:info@affinityrealestate.com) | office: 218-237-3333 | fax:218-237-3377



**\$105,000**  
MLS 6490647 Land  
TBD State 200  
Bagley MN 56621





website: [www.AffinityRealEstate.com](http://www.AffinityRealEstate.com) | email: [info@affinityrealestate.com](mailto:info@affinityrealestate.com) | office: 218-237-3333 | fax:218-237-3377



**\$105,000**  
MLS 6490647 Land  
TBD State 200  
Bagley MN 56621



website: [www.AffinityRealEstate.com](http://www.AffinityRealEstate.com) | email: [info@affinityrealestate.com](mailto:info@affinityrealestate.com) | office: 218-237-3333 | fax:218-237-3377



**\$105,000**  
MLS 6490647 Land  
TBD State 200  
Bagley MN 56621



website: [www.AffinityRealEstate.com](http://www.AffinityRealEstate.com) | email: [info@affinityrealestate.com](mailto:info@affinityrealestate.com) | office: 218-237-3333 | fax:218-237-3377



**\$105,000**  
MLS 6490647 Land  
TBD State 200  
Bagley MN 56621



website: [www.AffinityRealEstate.com](http://www.AffinityRealEstate.com) | email: [info@affinityrealestate.com](mailto:info@affinityrealestate.com) | office: 218-237-3333 | fax:218-237-3377



**\$105,000**  
MLS 6490647 Land  
TBD State 200  
Bagley MN 56621