



MLS 6490649 Land

\$127,500

17.02 Acres
Raw Land

TBD County Rd 1
Pequot Lakes MN 56472

Status: Active

Description:

Just west of Gull Lake, Brainerd, Nisswa, Lake Shore, and the rest of the Brainerd Lakes Area; sits this beautiful 17+/- acre parcel ready for your next home build or hobby farm! Plenty of room and level ground; with sights of Home Brook to the east and sunsets to the west. Bring your ideas and plans to this great piece of land in a very desirable area!

Additional Details:

Lot Acres	17.02
Lot Dimensions	570x1300
School District	116
Taxes	\$1
Taxes with Assessments	\$1
Tax Year	2023

Additional Features:

Driving Directions:

From Pillager: Head north on County Rd 1. Property on East side.



Listed By:
Edina Realty, Inc.

Affinity Real Estate Inc. participates in the Regional Multiple Listing Service of Minnesota, Inc Broker Reciprocity (sm) program, allowing us to display other broker's listings on our website. All properties are subject to prior sale, change or withdrawal.



Call Affinity Real Estate

218-237-3333

info@affinityrealestate.com



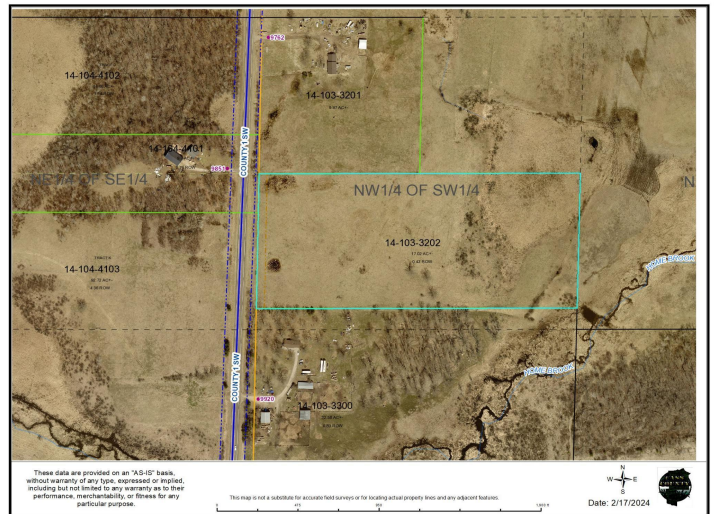
Affinity Real Estate - 600 Park Avenue South - Park Rapids MN 56470



website: www.AffinityRealEstate.com | email: info@affinityrealestate.com | office: 218-237-3333 | fax:218-237-3377



\$127,500
MLS 6490649 Land
TBD County Rd 1
Pequot Lakes MN 56472



website: www.AffinityRealEstate.com | email: info@affinityrealestate.com | office: 218-237-3333 | fax:218-237-3377



\$127,500
 MLS 6490649 Land
 TBD County Rd 1
 Pequot Lakes MN 56472