



MLS 6490661 Lake Home

**\$324,900**

1,620 sq ft  
2 bedrooms  
2 baths

40994 County Highway 56  
Frazee MN 56544

Waterfront: South Twin Lake  
(03018200)

Status: Active

**Description:**

PRIVACY ON 7.58 ACRES AND 250 ft. SHORELINE ON SOUTH TWIN LAKE. 2 bedroom/2 bathroom home with room in lower level for a potential third bedroom. Walkout basement for easy access to the lake and beauty this property holds. Recently added metal gutters and downspouts. This property is truly one of a kind, schedule a tour today and own in time for Spring!

**Additional Details:**

Year Built	1995
Lot Acres	7.58
Lot Dimensions	250x1339
Garage Stalls	2
School District	23
Taxes	\$2,436
Taxes with Assessments	\$2,436
Tax Year	2023

**Additional Features:**

**Fuel:** Propane **Heat:** Forced Air

**Driving Directions:**

From DL, take Hwy 34 East 11 miles to Co Hwy 56, turn right and follow Co Hwy 56 3.7 miles to property. In the event of road construction, take alternate routes.



Listed By:  
RE/MAX LAKES REGION

Affinity Real Estate Inc. participates in the Regional Multiple Listing Service of Minnesota, Inc Broker Reciprocity (sm) program, allowing us to display other broker's listings on our website. All properties are subject to prior sale, change or withdrawal.



**Call Affinity Real Estate**

**218-237-3333**

**info@affinityrealestate.com**



**Affinity Real Estate - 600 Park Avenue South - Park Rapids MN 56470**





website: [www.AffinityRealEstate.com](http://www.AffinityRealEstate.com) | email: [info@affinityrealestate.com](mailto:info@affinityrealestate.com) | office: 218-237-3333 | fax: 218-237-3377



**\$324,900**

MLS 6490661 Lake Home  
40994 County Highway 56  
Frazee MN 56544





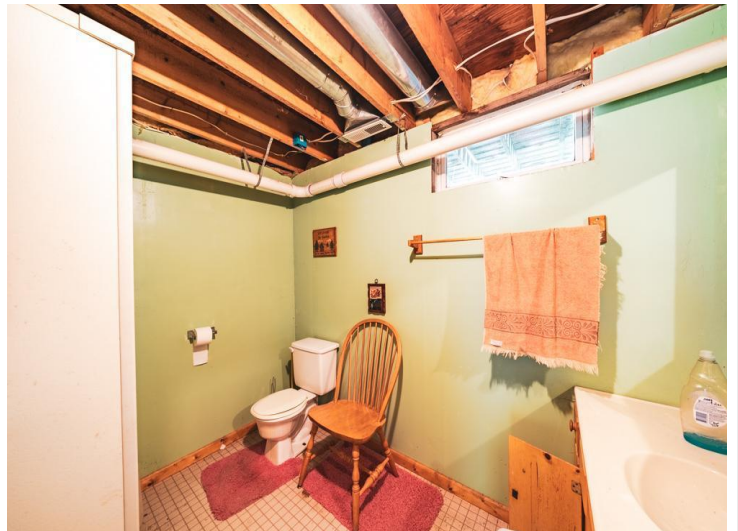
website: [www.AffinityRealEstate.com](http://www.AffinityRealEstate.com) | email: [info@affinityrealestate.com](mailto:info@affinityrealestate.com) | office: 218-237-3333 | fax: 218-237-3377

**Affinity**  
REAL ESTATE INC

**\$324,900**

MLS 6490661 Lake Home  
40994 County Highway 56  
Frazee MN 56544





website: [www.AffinityRealEstate.com](http://www.AffinityRealEstate.com) | email: [info@affinityrealestate.com](mailto:info@affinityrealestate.com) | office: 218-237-3333 | fax: 218-237-3377

**Affinity**  
REAL ESTATE INC

**\$324,900**  
MLS 6490661 Lake Home  
40994 County Highway 56  
Frazee MN 56544





website: [www.AffinityRealEstate.com](http://www.AffinityRealEstate.com) | email: [info@affinityrealestate.com](mailto:info@affinityrealestate.com) | office: 218-237-3333 | fax: 218-237-3377



**\$324,900**

MLS 6490661 Lake Home  
40994 County Highway 56  
Frazee MN 56544





website: [www.AffinityRealEstate.com](http://www.AffinityRealEstate.com) | email: [info@affinityrealestate.com](mailto:info@affinityrealestate.com) | office: 218-237-3333 | fax: 218-237-3377



**\$324,900**  
 MLS 6490661 Lake Home  
 40994 County Highway 56  
 Frazee MN 56544





website: [www.AffinityRealEstate.com](http://www.AffinityRealEstate.com) | email: [info@affinityrealestate.com](mailto:info@affinityrealestate.com) | office: 218-237-3333 | fax: 218-237-3377



**\$324,900**

MLS 6490661 Lake Home  
40994 County Highway 56  
Frazee MN 56544