



MLS 6491645 Residential

\$339,900

1,610 sq ft
3 bedrooms
2 baths

7589 White Overlook Drive
Breezy Point MN 56472

Status: Hold

Description:

This meticulously maintained property invites you in with warmth and charm, starting as soon as you walk in the door. A stone fireplace, hardwood floors, and a wood-paneled ceiling creates a warm and inviting ambiance. Step outside to enjoy a vibrant flower garden off the patio, and a raised vegetable garden ready for cultivation. A perfectly manicured lawn, with an invisible fence to keep your pets safe, sets the stage for a private escape. The 16x10 garden shed, complete tongue and groove inside, and electric with a ceiling fan, offers endless possibilities for creative endeavors.

Seamlessly blending indoor and outdoor living, this single-level home is an oasis of comfort. Schedule a showing to experience the perfect blend of elegance and simplicity that awaits you!

Additional Details:

Year Built	2017
Lot Acres	0.56
Lot Dimensions	100x245x100x245
Garage Stalls	3
School District	186
Taxes	\$2,383
Taxes with Assessments	\$2,408
Tax Year	2023

Additional Features:

Basement: None **Fuel:** Natural Gas **Garage:** 3 **Heat:** Forced Air **Sewer:** Tank with Drainage Field **Water:** Drilled, Private, Well **Air Conditioning:** Central Air

Driving Directions:

From County Rd 11, north on Ranchette, right on Winter Trail, left on Hillside Pass, right on White Overlook to property on right.



Listed By:
Realty Group LLC

Affinity Real Estate Inc. participates in the Regional Multiple Listing Service of Minnesota, Inc Broker Reciprocity (sm) program, allowing us to display other broker's listings on our website. All properties are subject to prior sale, change or withdrawal.



Call Affinity Real Estate

218-237-3333

info@affinityrealestate.com



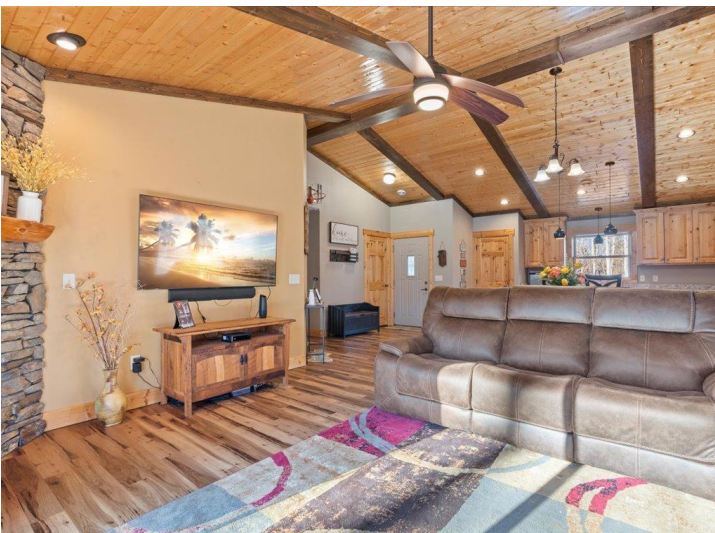
Affinity Real Estate - 600 Park Avenue South - Park Rapids MN 56470



website: www.AffinityRealEstate.com | email: info@affinityrealestate.com | office: 218-237-3333 | fax: 218-237-3377



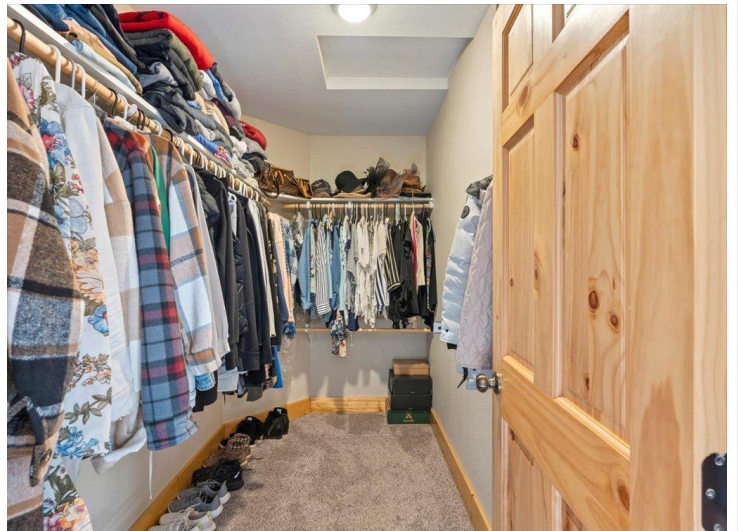
\$339,900
 MLS 6491645 Residential
 7589 White Overlook Drive
 Breezy Point MN 56472



website: www.AffinityRealEstate.com | email: info@affinityrealestate.com | office: 218-237-3333 | fax: 218-237-3377

Affinity
REAL ESTATE INC

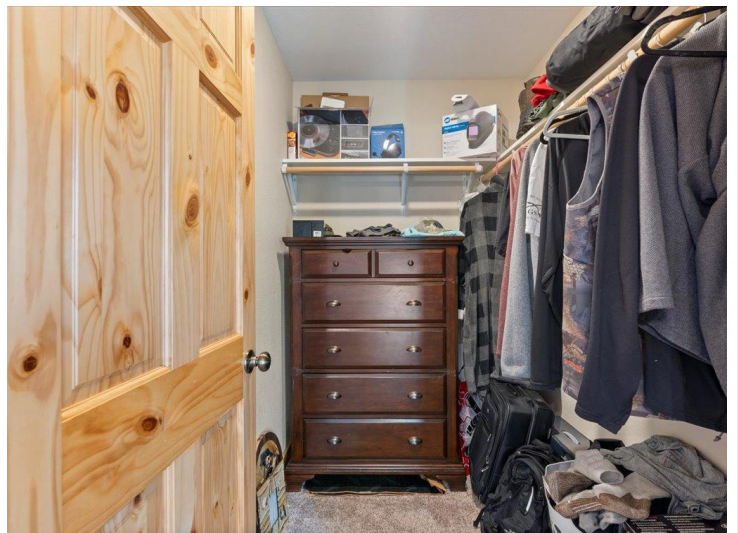
\$339,900
MLS 6491645 Residential
7589 White Overlook Drive
Breezy Point MN 56472



website: www.AffinityRealEstate.com | email: info@affinityrealestate.com | office: 218-237-3333 | fax: 218-237-3377

Affinity
REAL ESTATE INC

\$339,900
MLS 6491645 Residential
7589 White Overlook Drive
Breezy Point MN 56472



website: www.AffinityRealEstate.com | email: info@affinityrealestate.com | office: 218-237-3333 | fax: 218-237-3377

Affinity
REAL ESTATE INC

\$339,900
MLS 6491645 Residential
7589 White Overlook Drive
Breezy Point MN 56472



website: www.AffinityRealEstate.com | email: info@affinityrealestate.com | office: 218-237-3333 | fax: 218-237-3377



\$339,900
 MLS 6491645 Residential
 7589 White Overlook Drive
 Breezy Point MN 56472

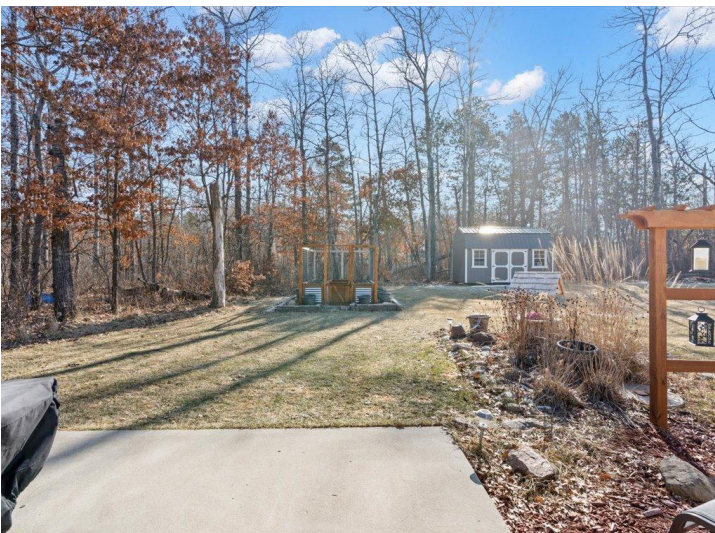


website: www.AffinityRealEstate.com | email: info@affinityrealestate.com | office: 218-237-3333 | fax: 218-237-3377

Affinity
REAL ESTATE INC

\$339,900

MLS 6491645 Residential
7589 White Overlook Drive
Breezy Point MN 56472



website: www.AffinityRealEstate.com | email: info@affinityrealestate.com | office: 218-237-3333 | fax: 218-237-3377



\$339,900

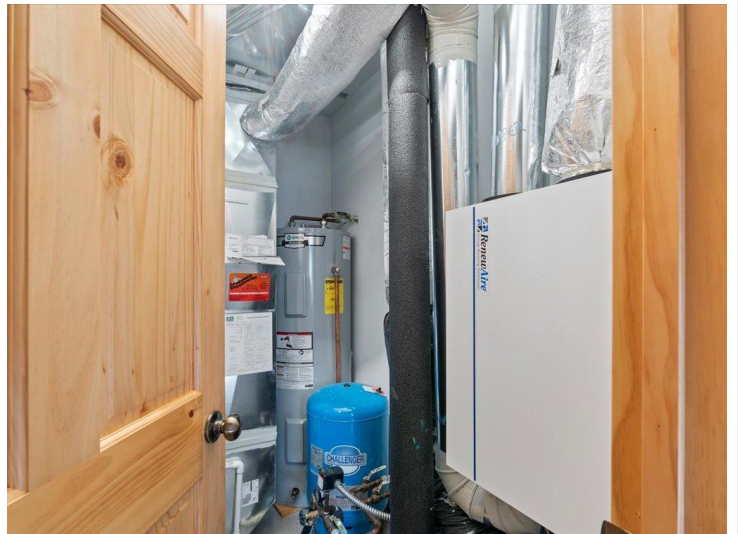
MLS 6491645 Residential
7589 White Overlook Drive
Breezy Point MN 56472



website: www.AffinityRealEstate.com | email: info@affinityrealestate.com | office: 218-237-3333 | fax: 218-237-3377



\$339,900
 MLS 6491645 Residential
 7589 White Overlook Drive
 Breezy Point MN 56472



website: www.AffinityRealEstate.com | email: info@affinityrealestate.com | office: 218-237-3333 | fax: 218-237-3377



\$339,900
MLS 6491645 Residential
7589 White Overlook Drive
Breezy Point MN 56472