



MLS 6491729 Lake Home

\$299,000

1,248 sq ft
2 bedrooms
1 baths

2091 Big Deep Lake Drive
Hackensack MN 56452

Waterfront: Big Deep

Status: Active

Description:

Enjoy sun rises over Big Deep Lake! Big Deep is a private lake, there's no public boat access. It is also home to Deep Portage Reserve which contributes to a lot of undeveloped land & shoreline enhancing the peace & tranquility of the great North Woods. This property boasts 200 feet of hard bottom shoreline, 1.38 acres of land & 3-car garage. The 2 bedroom, 1 bath year-round cabin is ready for you to come & start your new memories. The property is conveniently located between Hackensack & Longville & all the trail systems.

Additional Details:

Year Built	1960
Lot Acres	1.38
Lot Dimensions	200x333x200x333
Garage Stalls	3
School District	113
Taxes	\$1,626
Taxes with Assessments	\$1,692
Tax Year	2023

Additional Features:

Basement: Crawl Space, Partial **Fuel:** Electric, Propane **Garage:** 3 **Heat:** Forced Air **Sewer:** Septic System Compliant - No **Water:** Sand Point
Air Conditioning: None

Driving Directions:

From Hackensack, east on Cty 5 to right on Cty 46 to right on 24th Ave. to left on Big Deep Lake Dr NW to #2091 on right.



Listed By:
Bill Hansen Realty/Hackensack

Affinity Real Estate Inc. participates in the Regional Multiple Listing Service of Minnesota, Inc Broker Reciprocity (sm) program, allowing us to display other broker's listings on our website. All properties are subject to prior sale, change or withdrawal.



Call Affinity Real Estate

218-237-3333

info@affinityrealestate.com



Affinity Real Estate - 600 Park Avenue South - Park Rapids MN 56470



website: www.AffinityRealEstate.com | email: info@affinityrealestate.com | office: 218-237-3333 | fax: 218-237-3377

Affinity
REAL ESTATE INC

\$299,000

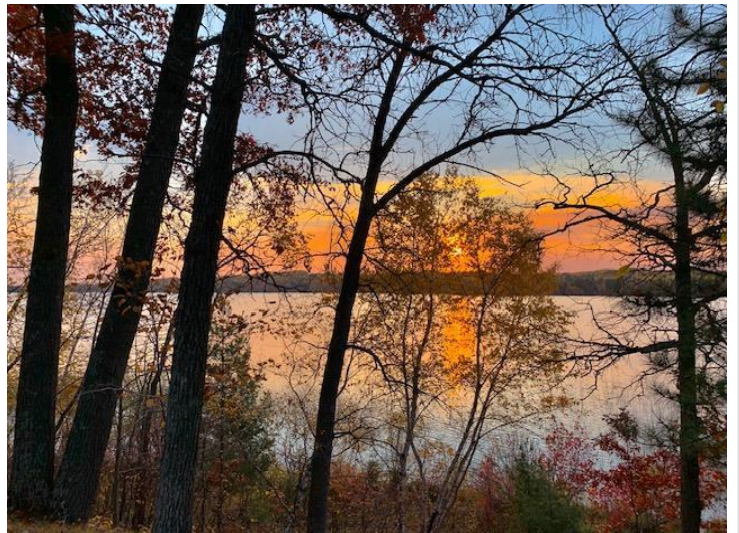
MLS 6491729 Lake Home
2091 Big Deep Lake Drive
Hackensack MN 56452



website: www.AffinityRealEstate.com | email: info@affinityrealestate.com | office: 218-237-3333 | fax: 218-237-3377

Affinity
REAL ESTATE INC

\$299,000
MLS 6491729 Lake Home
2091 Big Deep Lake Drive
Hackensack MN 56452

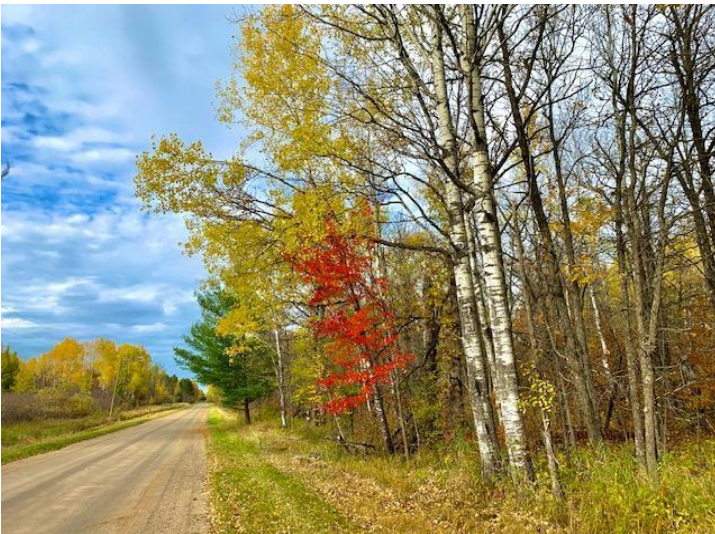


website: www.AffinityRealEstate.com | email: info@affinityrealestate.com | office: 218-237-3333 | fax: 218-237-3377

Affinity
REAL ESTATE INC

\$299,000

MLS 6491729 Lake Home
2091 Big Deep Lake Drive
Hackensack MN 56452



website: www.AffinityRealEstate.com | email: info@affinityrealestate.com | office: 218-237-3333 | fax: 218-237-3377



\$299,000

MLS 6491729 Lake Home
2091 Big Deep Lake Drive
Hackensack MN 56452



website: www.AffinityRealEstate.com | email: info@affinityrealestate.com | office: 218-237-3333 | fax: 218-237-3377



\$299,000

MLS 6491729 Lake Home
2091 Big Deep Lake Drive
Hackensack MN 56452



website: www.AffinityRealEstate.com | email: info@affinityrealestate.com | office: 218-237-3333 | fax: 218-237-3377



\$299,000
MLS 6491729 Lake Home
2091 Big Deep Lake Drive
Hackensack MN 56452