



MLS 6491889 Lake Land

\$349,900

Description:

Perfect Lake Front Retreat in northern Minnesota. 25 lovely, wooded, rolling, acres and 780 feet of shoreline! The land is woven with atv trails throughout. It is stunning! Perfect for that quiet cabin you have been wanting or even a place to invite your close people to bring their RV's or tents! Would make an excellent campgrounds being that the lake has a public access. There are several sites to choose from that would perfect for building a home. One spot has a panoramic lake view. Walker Brook Lake is spring fed and boasts great fishing. It is deep and clean! Bring your binoculars...for ample wildlife viewing! If a quiet place with lots of privacy is what you seek, then what are you waiting for? Buy now and enjoy all summer long!!

Additional Details:

Lot Acres	25
Lot Dimensions	680x1830x780x1390
School District	2311
Taxes	\$1,117
Taxes with Assessments	\$1,222
Tax Year	2023

Additional Features:

Driving Directions:

from Bemidji: Highway 2 to County 2 left, to 340th St Right to property



Listed By:
Headwaters Realty Services

Affinity Real Estate Inc. participates in the Regional Multiple Listing Service of Minnesota, Inc Broker Reciprocity (sm) program, allowing us to display other broker's listings on our website. All properties are subject to prior sale, change or withdrawal.



Call Affinity Real Estate

218-237-3333

info@affinityrealestate.com



Affinity Real Estate - 600 Park Avenue South - Park Rapids MN 56470



website: www.AffinityRealEstate.com | email: info@affinityrealestate.com | office: 218-237-3333 | fax: 218-237-3377



\$349,900
MLS 6491889 Lake Land
22625 340th Street
Bagley MN 56621



website: www.AffinityRealEstate.com | email: info@affinityrealestate.com | office: 218-237-3333 | fax:218-237-3377



\$349,900
 MLS 6491889 Lake Land
 22625 340th Street
 Bagley MN 56621



website: www.AffinityRealEstate.com | email: info@affinityrealestate.com | office: 218-237-3333 | fax: 218-237-3377



\$349,900
 MLS 6491889 Lake Land
 22625 340th Street
 Bagley MN 56621



website: www.AffinityRealEstate.com | email: info@affinityrealestate.com | office: 218-237-3333 | fax: 218-237-3377



\$349,900

MLS 6491889 Lake Land
22625 340th Street
Bagley MN 56621



website: www.AffinityRealEstate.com | email: info@affinityrealestate.com | office: 218-237-3333 | fax: 218-237-3377



\$349,900
MLS 6491889 Lake Land
22625 340th Street
Bagley MN 56621

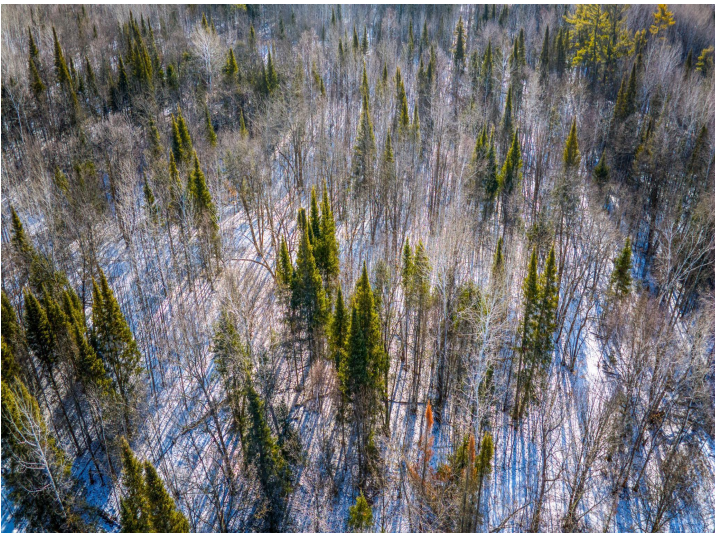


website: www.AffinityRealEstate.com | email: info@affinityrealestate.com | office: 218-237-3333 | fax: 218-237-3377



\$349,900

MLS 6491889 Lake Land
22625 340th Street
Bagley MN 56621



website: www.AffinityRealEstate.com | email: info@affinityrealestate.com | office: 218-237-3333 | fax: 218-237-3377



\$349,900

MLS 6491889 Lake Land
22625 340th Street
Bagley MN 56621

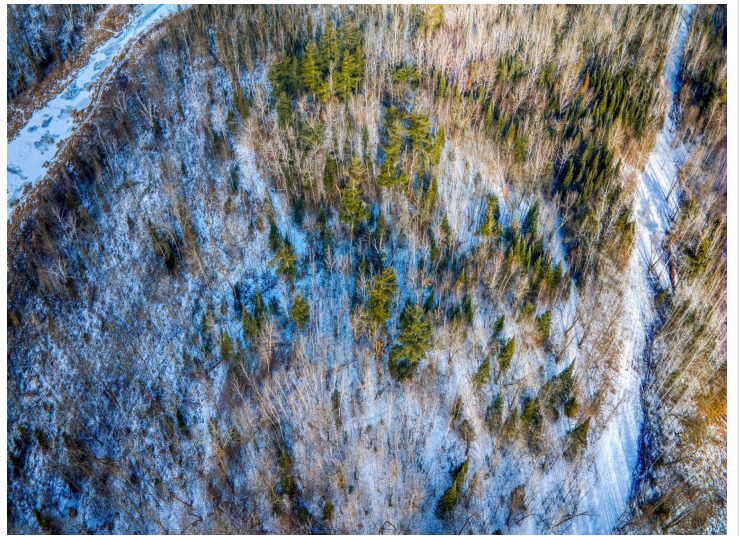


website: www.AffinityRealEstate.com | email: info@affinityrealestate.com | office: 218-237-3333 | fax: 218-237-3377



\$349,900

MLS 6491889 Lake Land
22625 340th Street
Bagley MN 56621

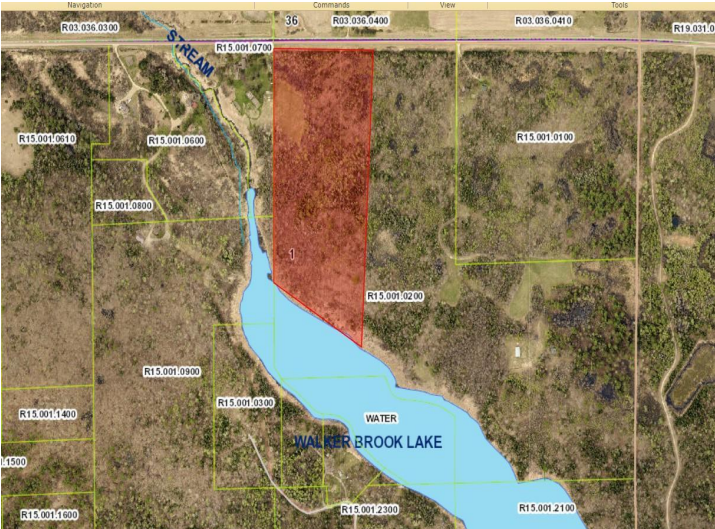


website: www.AffinityRealEstate.com | email: info@affinityrealestate.com | office: 218-237-3333 | fax: 218-237-3377



\$349,900

MLS 6491889 Lake Land
22625 340th Street
Bagley MN 56621



website: www.AffinityRealEstate.com | email: info@affinityrealestate.com | office: 218-237-3333 | fax: 218-237-3377



\$349,900
 MLS 6491889 Lake Land
 22625 340th Street
 Bagley MN 56621