



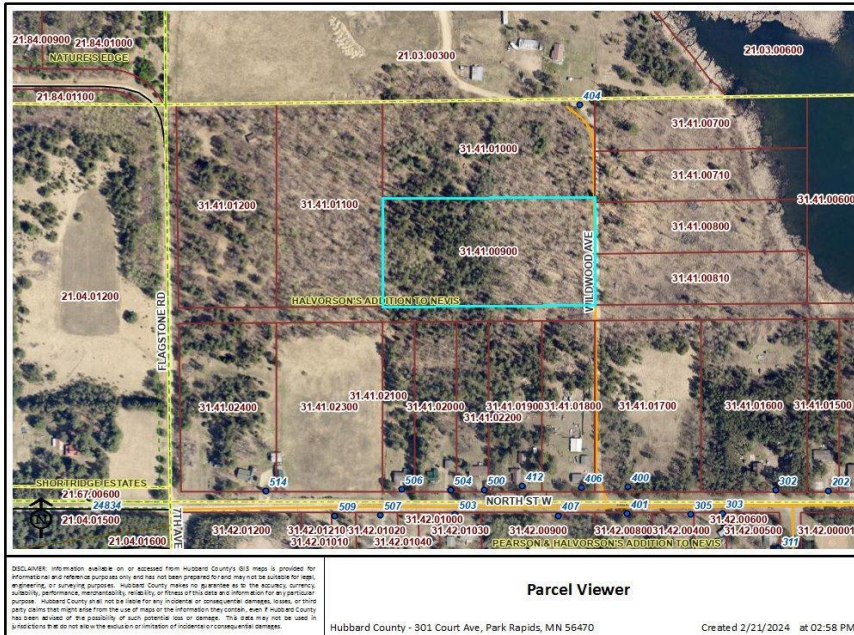
MLS 6492543 Land

**\$65,000**

4.78 Acres  
Raw Land

TBD Wildwood Ave  
Nevis MN 56467

Status: Active



Parcel Viewer

Hubbard County - 301 Court Ave, Park Rapids, MN 56470

Created 2/21/2024 at 02:58 PM

**Description:**

Nevis city lot on almost a rare 5 acres with a great mixture of pines and hardwoods. This property is blessed with many building sites on level ground or gently rolling terrain. The location offers up the ultimate in privacy but yet close to many of the area best attributes Minnesota has to offer, such as lakes, fishing, snowmobile and ATV trails, Heartland Trail and still within walking distance to school, churches, downtown and shopping. Here is your opportunity to either build your home, use it as investment property or just enjoying the setting that will offer a large array of wildlife.

**Additional Details:**

Lot Acres	4.78
Lot Dimensions	660 x 340
School District	308
Taxes	\$540
Taxes with Assessments	\$540
Tax Year	2024

**Additional Features:**

**Driving Directions:**

From 34/71 in Park Rapids go east on 34 to County 2 in Nevis. Turn left and follow to North Street. Turn left and follow to Wildwood Avenue, turn right to the lot on the left.



Listed By:  
Affinity Real Estate Inc.

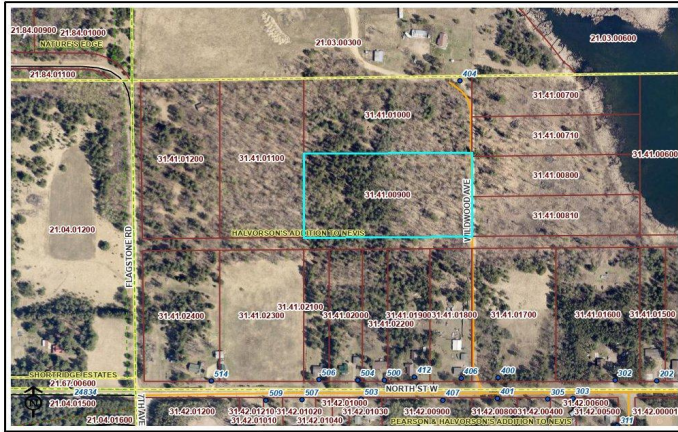
Affinity Real Estate Inc. participates in the Regional Multiple Listing Service of Minnesota, Inc Broker Reciprocity (sm) program, allowing us to display other broker's listings on our website. All properties are subject to prior sale, change or withdrawal.



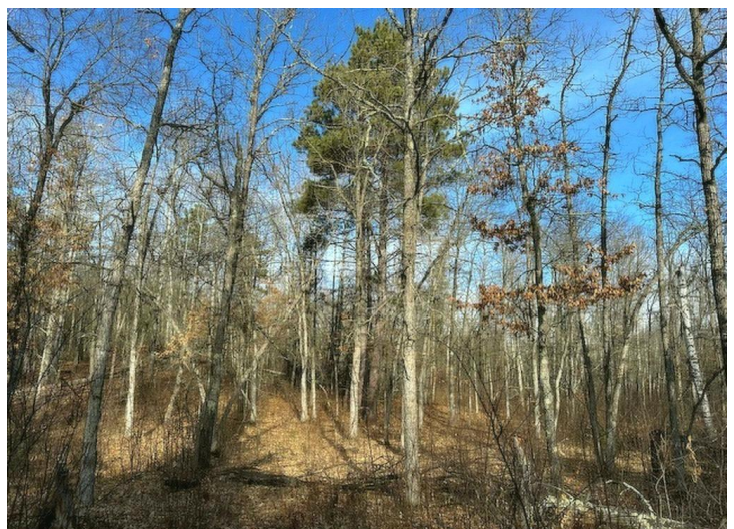
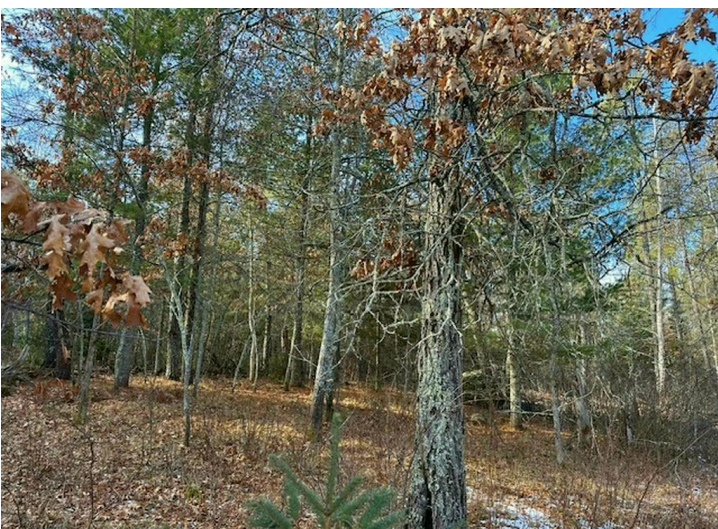
Call Affinity Real Estate  
**218-237-3333**  
info@affinityrealestate.com



Affinity Real Estate - 600 Park Avenue South - Park Rapids MN 56470



**Parcel Viewer**  
 Hubbard County - 301 Court Ave., Park Rapids, MN 56470  
 Created 2/21/2024 @ 02:58 PM



website: [www.AffinityRealEstate.com](http://www.AffinityRealEstate.com) | email: [info@affinityrealestate.com](mailto:info@affinityrealestate.com) | office: 218-237-3333 | fax: 218-237-3377



**\$65,000**  
 MLS 6492543 Land  
 TBD Wildwood Ave  
 Nevis MN 56467



website: [www.AffinityRealEstate.com](http://www.AffinityRealEstate.com) | email: [info@affinityrealestate.com](mailto:info@affinityrealestate.com) | office: 218-237-3333 | fax:218-237-3377



**\$65,000**  
MLS 6492543 Land  
TBD Wildwood Ave  
Nevis MN 56467