



MLS 6493147 Residential

**\$309,900**

1,838 sq ft  
3 bedrooms  
2 baths

31332 Cherokee Trail  
Breezy Point MN 56472

Status: Closed

**Description:**

Welcome to this convenient, desirable & move-in-ready Breezy Point home on a spacious 1+ acre lot w/plenty of rm for outdoor games, gardens & more. Home offers entry to a vaulted main floor living rm w/trapezoid windows creating natural lighting, dining rm area w/patio doors opens to a secluded back yard deck, kitchen features stainless steel appliances & breakfast bar. Primary BR & guest BR w/W.I.C, & a full BA w/tile floor complete the main level. Fully finished walkout lower level provides a spacious family rm w/daylight windows, a recreational/exercise area & patio doors leading to the side yard patio, 3rd BR w/W.I.C, full BA w/tile floor, & laundry. Additional features include spacious 3 car attached garage w/plenty of rm for a workshop, storage & toys, concrete driveway, beautifully landscaped & treed grounds. Close to premier golf courses, schools, restaurants, recreational lakes, hiking, biking, horseback riding trails & all the Beautiful Brainerd Lakes Area offers.

**Additional Details:**

Year Built	2001
Lot Acres	1.04
Lot Dimensions	317x266x429
Garage Stalls	3
School District	186
Taxes	\$1,981
Taxes with Assessments	\$2,006
Tax Year	2023

**Additional Features:**

**Fuel:** Natural Gas **Heat:** Forced Air

**Driving Directions:**

From the gates of Breezy Point, go West on CR 11 to Right on Ranchette Dr to Left on the second entrance to Cherokee Trail to home and Fr#31332 on Left.



Listed By:  
Kurilla Real Estate LTD

Affinity Real Estate Inc. participates in the Regional Multiple Listing Service of Minnesota, Inc Broker Reciprocity (sm) program, allowing us to display other broker's listings on our website. All properties are subject to prior sale, change or withdrawal.



**Call Affinity Real Estate**

**218-237-3333**

**info@affinityrealestate.com**



**Affinity Real Estate - 600 Park Avenue South - Park Rapids MN 56470**





website: [www.AffinityRealEstate.com](http://www.AffinityRealEstate.com) | email: [info@affinityrealestate.com](mailto:info@affinityrealestate.com) | office: 218-237-3333 | fax: 218-237-3377

**Affinity**  
REAL ESTATE INC

**\$309,900**  
MLS 6493147 Residential  
31332 Cherokee Trail  
Breezy Point MN 56472



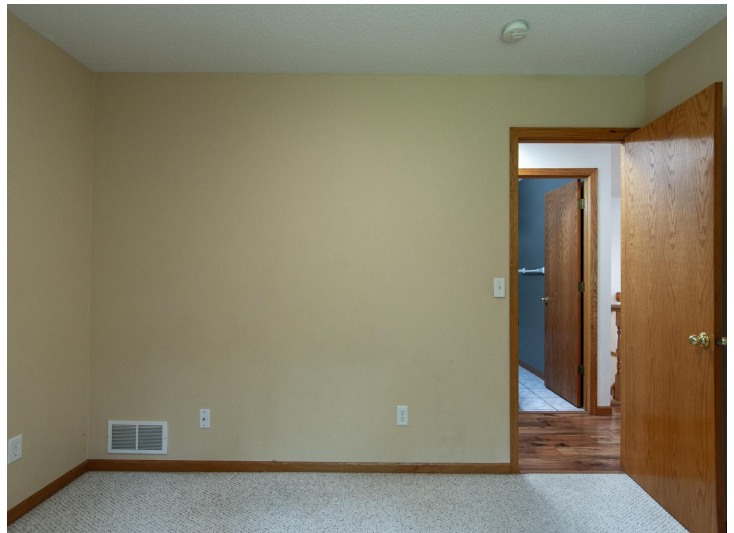


website: [www.AffinityRealEstate.com](http://www.AffinityRealEstate.com) | email: [info@affinityrealestate.com](mailto:info@affinityrealestate.com) | office: 218-237-3333 | fax: 218-237-3377



**\$309,900**  
 MLS 6493147 Residential  
 31332 Cherokee Trail  
 Breezy Point MN 56472





website: [www.AffinityRealEstate.com](http://www.AffinityRealEstate.com) | email: [info@affinityrealestate.com](mailto:info@affinityrealestate.com) | office: 218-237-3333 | fax: 218-237-3377



**\$309,900**  
MLS 6493147 Residential  
31332 Cherokee Trail  
Breezy Point MN 56472





website: [www.AffinityRealEstate.com](http://www.AffinityRealEstate.com) | email: [info@affinityrealestate.com](mailto:info@affinityrealestate.com) | office: 218-237-3333 | fax: 218-237-3377



**\$309,900**  
MLS 6493147 Residential  
31332 Cherokee Trail  
Breezy Point MN 56472





website: [www.AffinityRealEstate.com](http://www.AffinityRealEstate.com) | email: [info@affinityrealestate.com](mailto:info@affinityrealestate.com) | office: 218-237-3333 | fax: 218-237-3377



**\$309,900**  
 MLS 6493147 Residential  
 31332 Cherokee Trail  
 Breezy Point MN 56472





website: [www.AffinityRealEstate.com](http://www.AffinityRealEstate.com) | email: [info@affinityrealestate.com](mailto:info@affinityrealestate.com) | office: 218-237-3333 | fax: 218-237-3377



**\$309,900**  
 MLS 6493147 Residential  
 31332 Cherokee Trail  
 Breezy Point MN 56472





website: [www.AffinityRealEstate.com](http://www.AffinityRealEstate.com) | email: [info@affinityrealestate.com](mailto:info@affinityrealestate.com) | office: 218-237-3333 | fax: 218-237-3377



**\$309,900**  
MLS 6493147 Residential  
31332 Cherokee Trail  
Breezy Point MN 56472