



MLS 6493370 Commercial Sale

\$749,000

Description:

A thriving towing business nestled on a serene 5-acre rural Bemidji property, now available for purchase! Business is equipped with long standing relationships for a successful towing operation.

Massive heated shop, providing ample space for vehicle maintenance and storage year-round.

The property features an impound lot, ensuring secure storage for vehicles, while the generous parking space accommodates a fleet of vehicles with ease.

Ellis Towing has been a cornerstone of the community for several years, and now, it's poised for a new chapter under fresh ownership.

Included in this remarkable sale are three essential vehicles: a reliable Freightliner truck, along with two versatile flatbeds - one F650 and one F750. With the added advantage of the bonus solar panels, you'll not only enjoy energy efficiency but also contribute to a sustainable future.

Seize the reins of the towing industry in this thriving region, and infuse it with your entrepreneurial spirit and vision.

Additional Details:

Year Built	2018
Lot Acres	5
Lot Dimensions	495x439
Garage Stalls	4
School District	31
Taxes	\$444
Taxes with Assessments	\$444
Tax Year	2023

Additional Features:

Fuel: Propane **Garage:** 4 **Heat:** Other **Sewer:** None **Water:** None

Driving Directions:

5th Street to Right on Schroeder Rd NW to property on right. Turn into the driveway where the fire number is



Listed By:
Headwaters Realty Services LLC

Affinity Real Estate Inc. participates in the Regional Multiple Listing Service of Minnesota, Inc Broker Reciprocity (sm) program, allowing us to display other broker's listings on our website. All properties are subject to prior sale, change or withdrawal.



Call Affinity Real Estate

218-237-3333

info@affinityrealestate.com



Affinity Real Estate - 600 Park Avenue South - Park Rapids MN 56470



website: www.AffinityRealEstate.com | email: info@affinityrealestate.com | office: 218-237-3333 | fax:218-237-3377



\$749,000
MLS 6493370 Commercial
Sale
610 Schroeder Road
Bemidji MN 56601



website: www.AffinityRealEstate.com | email: info@affinityrealestate.com | office: 218-237-3333 | fax:218-237-3377



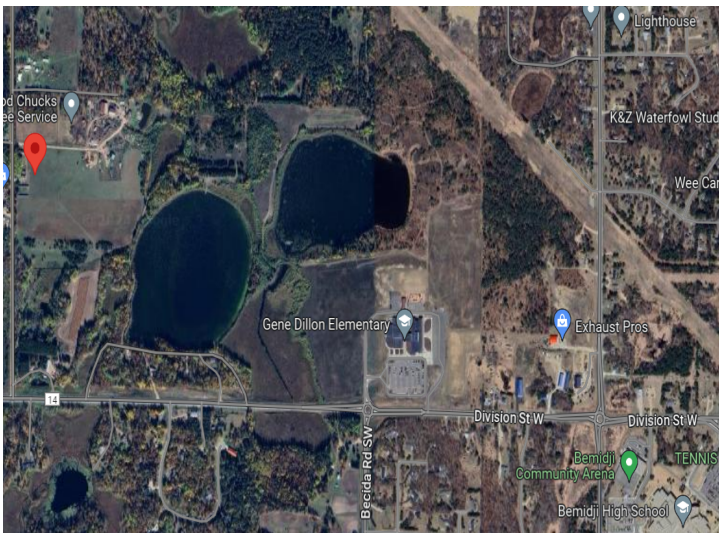
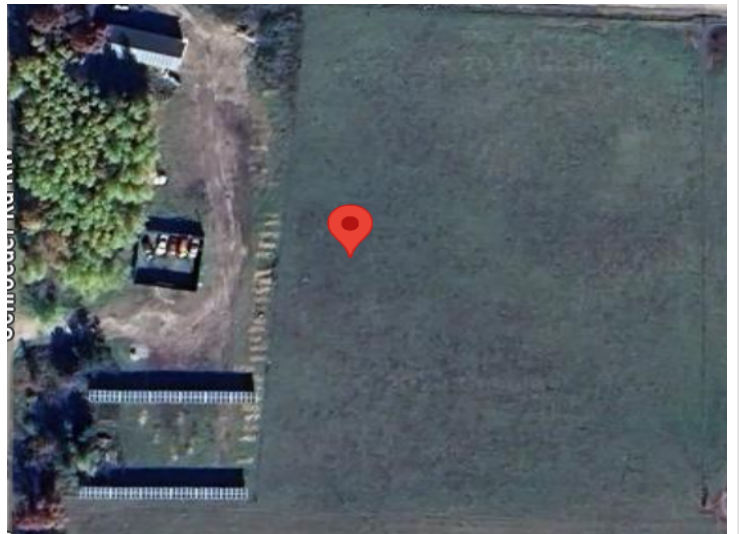
\$749,000
MLS 6493370 Commercial
Sale
610 Schroeder Road
Bemidji MN 56601



website: www.AffinityRealEstate.com | email: info@affinityrealestate.com | office: 218-237-3333 | fax:218-237-3377



\$749,000
MLS 6493370 Commercial
Sale
610 Schroeder Road
Bemidji MN 56601



website: www.AffinityRealEstate.com | email: info@affinityrealestate.com | office: 218-237-3333 | fax:218-237-3377



\$749,000
MLS 6493370 Commercial
Sale
610 Schroeder Road
Bemidji MN 56601