



MLS 6493585 Lake Land

\$115,000

Description:

Nice Lake lot on Trillium Lake with a great view. Gradual elevation with building site cleared. Publicly maintained road. Centrally located between Longville and Hackensack in the heart of lake country with hundreds of acres of public land across the road.

Additional Details:

Lot Acres	1
Lot Dimensions	125x344x119x339
School District	113
Taxes	\$544
Taxes with Assessments	\$544
Tax Year	2023

Additional Features:

Driving Directions:

From Longville: west on Co RD 5 to a left on 18th Ave NW to a right on Trillium Drive NW to sign on property.



Listed By:
Bill Hansen Realty/Longville

Affinity Real Estate Inc. participates in the Regional Multiple Listing Service of Minnesota, Inc Broker Reciprocity (sm) program, allowing us to display other broker's listings on our website. All properties are subject to prior sale, change or withdrawal.



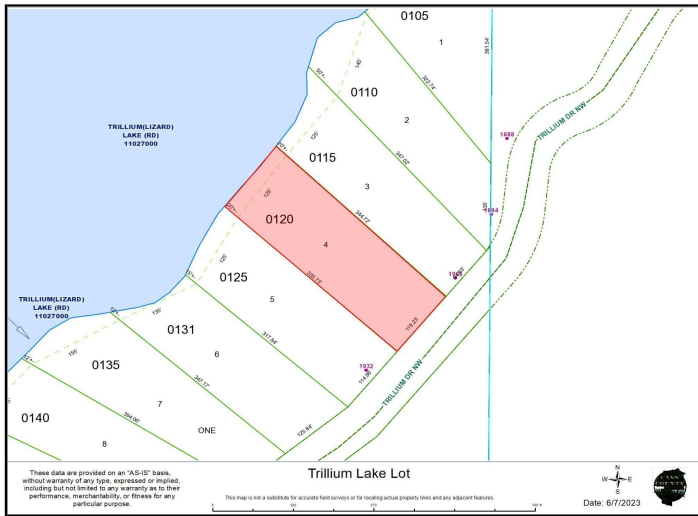
Call Affinity Real Estate

218-237-3333

info@affinityrealestate.com



Affinity Real Estate - 600 Park Avenue South - Park Rapids MN 56470



website: www.AffinityRealEstate.com | email: info@affinityrealestate.com | office: 218-237-3333 | fax: 218-237-3377



\$115,000
MLS 6493585 Lake Land
TBD Trillium Drive
Hackensack MN 56452



website: www.AffinityRealEstate.com | email: info@affinityrealestate.com | office: 218-237-3333 | fax: 218-237-3377



\$115,000
MLS 6493585 Lake Land
TBD Trillium Drive
Hackensack MN 56452