



MLS 6493609 Lake Land

**\$298,000**

**Description:**

Property consists of 2 PID's to equal 82.6 Acres.

Farm it and Fish it! Great property in excellent Location on 2 Lakes Land is currently being farmed. Tons of options.

**Additional Details:**

Lot Acres	82.6
Lot Dimensions	Parcel1=53.850 Acres Parcel2=27.75
School District	435
Taxes	\$258
Taxes with Assessments	\$258
Tax Year	2023

**Additional Features:**

**Driving Directions:**

From DL Co rd 21 north to co rd 34 east to 21 north to 374th st. (PLEASE USE GPS)



Listed By:  
eXp Realty

Affinity Real Estate Inc. participates in the Regional Multiple Listing Service of Minnesota, Inc Broker Reciprocity (sm) program, allowing us to display other broker's listings on our website. All properties are subject to prior sale, change or withdrawal.



**Call Affinity Real Estate**

**218-237-3333**

**info@affinityrealestate.com**

**MLS**



**Affinity Real Estate - 600 Park Avenue South - Park Rapids MN 56470**





website: [www.AffinityRealEstate.com](http://www.AffinityRealEstate.com) | email: [info@affinityrealestate.com](mailto:info@affinityrealestate.com) | office: 218-237-3333 | fax: 218-237-3377



**\$298,000**

MLS 6493609 Lake Land  
XXX 374th Street  
White Earth MN 56589



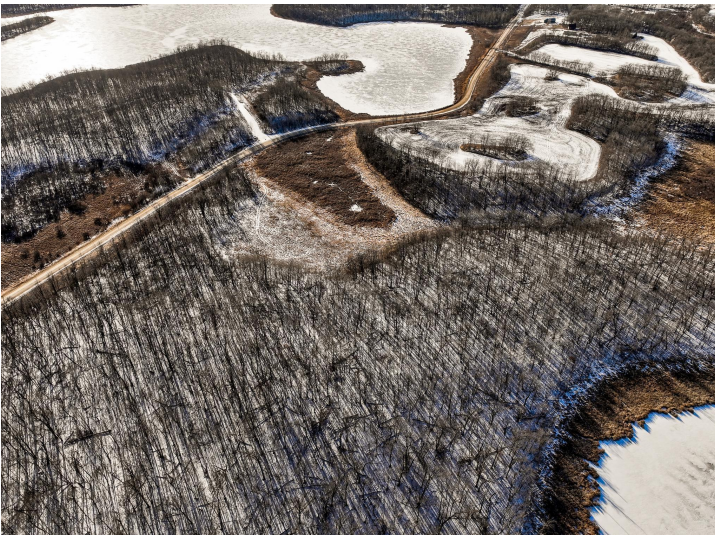


website: [www.AffinityRealEstate.com](http://www.AffinityRealEstate.com) | email: [info@affinityrealestate.com](mailto:info@affinityrealestate.com) | office: 218-237-3333 | fax: 218-237-3377



**\$298,000**  
 MLS 6493609 Lake Land  
 XXX 374th Street  
 White Earth MN 56589





website: [www.AffinityRealEstate.com](http://www.AffinityRealEstate.com) | email: [info@affinityrealestate.com](mailto:info@affinityrealestate.com) | office: 218-237-3333 | fax: 218-237-3377



**\$298,000**

MLS 6493609 Lake Land  
XXX 374th Street  
White Earth MN 56589





website: [www.AffinityRealEstate.com](http://www.AffinityRealEstate.com) | email: [info@affinityrealestate.com](mailto:info@affinityrealestate.com) | office: 218-237-3333 | fax:218-237-3377



**\$298,000**

MLS 6493609 Lake Land  
XXX 374th Street  
White Earth MN 56589