



MLS 6494763 Commercial Sale

\$589,000

Description:

Welcome to Emmaville, a thriving business and a piece of Northern MN History. This opportunity includes the gas station and convenience store, vintage bar, popular cafe, newly remodeled 4-unit Motel and an 8-site seasonal RV campground. Additionally, a 48 x 48 storage facility for boats and other toys and a 30 x 48 heated shop. Conveniently attached to the store is a 3 bed, 1 bath living area. Now is your chance to be part of historic Emmaville and take it into the future with your vision!

Additional Details:

Year Built	1940
Lot Acres	4
Lot Dimensions	400 x 170
Garage Stalls	4
School District	309
Taxes	\$4,360
Taxes with Assessments	\$6,062
Tax Year	2023

Additional Features:

Fuel: Electric, Propane **Garage:** 4 **Heat:** Baseboard, Dual, Forced Air, Fireplace(s), Space Heater **Sewer:** Tank with Drainage Field **Water:** Submersible - 4 Inch, Drilled **Air Conditioning:** Central Air, Window Unit(s)

Driving Directions:

From Park Rapids go East 1 mile, turn North on Cty Rd 4, proceed 11 miles to property on your left.



Listed By:
Affinity Real Estate Inc.

Affinity Real Estate Inc. participates in the Regional Multiple Listing Service of Minnesota, Inc Broker Reciprocity (sm) program, allowing us to display other broker's listings on our website. All properties are subject to prior sale, change or withdrawal.



Call Affinity Real Estate

218-237-3333

info@affinityrealestate.com



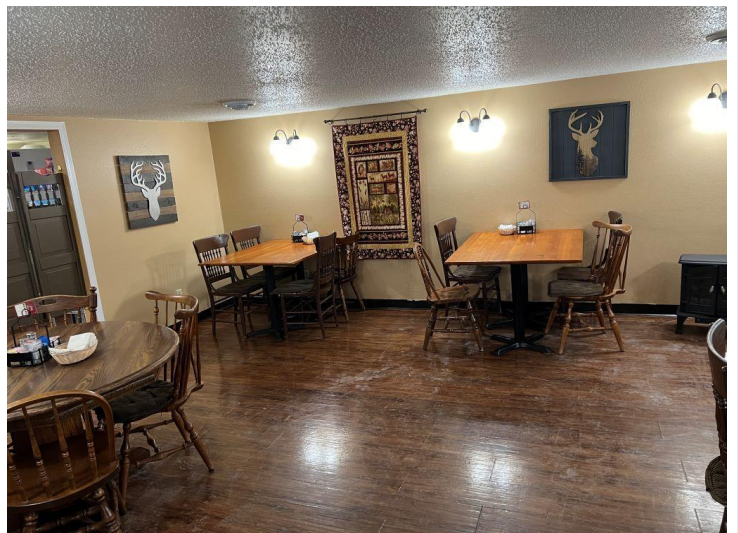
Affinity Real Estate - 600 Park Avenue South - Park Rapids MN 56470



website: www.AffinityRealEstate.com | email: info@affinityrealestate.com | office: 218-237-3333 | fax: 218-237-3377



\$589,000
MLS 6494763 Commercial
Sale
28021 County 4
Park Rapids MN 56470



website: www.AffinityRealEstate.com | email: info@affinityrealestate.com | office: 218-237-3333 | fax: 218-237-3377

Affinity
REAL ESTATE INC

\$589,000
MLS 6494763 Commercial
Sale
28021 County 4
Park Rapids MN 56470



website: www.AffinityRealEstate.com | email: info@affinityrealestate.com | office: 218-237-3333 | fax: 218-237-3377

Affinity
REAL ESTATE INC

\$589,000
MLS 6494763 Commercial
Sale
28021 County 4
Park Rapids MN 56470



website: www.AffinityRealEstate.com | email: info@affinityrealestate.com | office: 218-237-3333 | fax: 218-237-3377



\$589,000
MLS 6494763 Commercial
Sale
28021 County 4
Park Rapids MN 56470



website: www.AffinityRealEstate.com | email: info@affinityrealestate.com | office: 218-237-3333 | fax: 218-237-3377



\$589,000
 MLS 6494763 Commercial
 Sale
 28021 County 4
 Park Rapids MN 56470