



MLS 6495235 Lake Home

\$449,000

1,068 sq ft
3 bedrooms
2 baths

2946 Moose Lane
Cass Lake MN 56633

Waterfront: Leech

Status: Active

Description:

Leech Lake - completely furnished and "Turn Key" Year round lakeshore cabin with everything you need right here! You will just need to bring your suitcase! This cabin has been meticulously maintained. Property features 108 feet of sand shoreline on Sucker Bay of Leech Lake, 3 bedrooms, 2 baths, main level living, cozy wood fireplace, open concept, freshly painted rooms, electric heat, comfort height stools in baths, garage, insulated and vapor barrier crawl space, spacious level yard area to the Lake. Awesome Sunsets! Also includes Dock, boat lift and pontoon lift. Come take a look!

Additional Details:

Year Built	1994
Lot Acres	1.23
Lot Dimensions	108x522x100x519
Garage Stalls	1
School District	115
Taxes	\$2,468
Taxes with Assessments	\$2,534
Tax Year	2023

Additional Features:

Fuel: Electric **Heat:** Baseboard, Fireplace(s)

Driving Directions:

From Remer: West on #200 about 14 miles to Co Rd #8; Right on Co Rd #8 about 22 miles to US #2; Left/West on US #2 about 7 miles to Sucker Bay Road NW; Left on Sucker Bay Road NW about 10 miles to Ottertail Point Drive NW; Right about 3 miles to Moose Lane NW to sign and property.



Listed By:
Lake Country Properties

Affinity Real Estate Inc. participates in the Regional Multiple Listing Service of Minnesota, Inc Broker Reciprocity (sm) program, allowing us to display other broker's listings on our website. All properties are subject to prior sale, change or withdrawal.



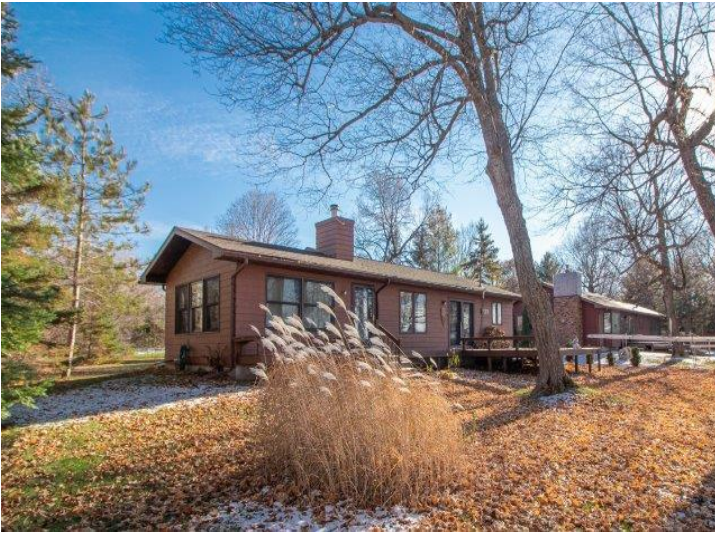
Call Affinity Real Estate

218-237-3333

info@affinityrealestate.com



Affinity Real Estate - 600 Park Avenue South - Park Rapids MN 56470



website: www.AffinityRealEstate.com | email: info@affinityrealestate.com | office: 218-237-3333 | fax: 218-237-3377

Affinity
REAL ESTATE INC

\$449,000

MLS 6495235 Lake Home
2946 Moose Lane
Cass Lake MN 56633



website: www.AffinityRealEstate.com | email: info@affinityrealestate.com | office: 218-237-3333 | fax: 218-237-3377

Affinity
REAL ESTATE INC

\$449,000
MLS 6495235 Lake Home
2946 Moose Lane
Cass Lake MN 56633



website: www.AffinityRealEstate.com | email: info@affinityrealestate.com | office: 218-237-3333 | fax: 218-237-3377

Affinity
REAL ESTATE INC

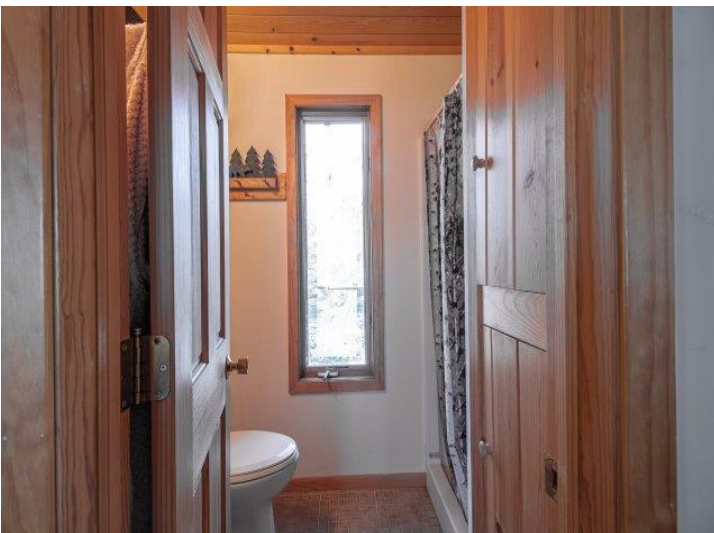
\$449,000
MLS 6495235 Lake Home
2946 Moose Lane
Cass Lake MN 56633



website: www.AffinityRealEstate.com | email: info@affinityrealestate.com | office: 218-237-3333 | fax: 218-237-3377

Affinity
REAL ESTATE INC

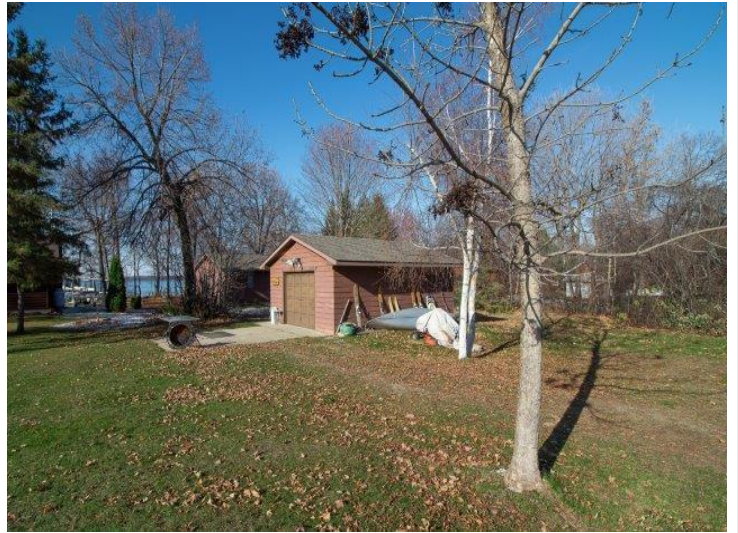
\$449,000
MLS 6495235 Lake Home
2946 Moose Lane
Cass Lake MN 56633



website: www.AffinityRealEstate.com | email: info@affinityrealestate.com | office: 218-237-3333 | fax: 218-237-3377

Affinity
REAL ESTATE INC

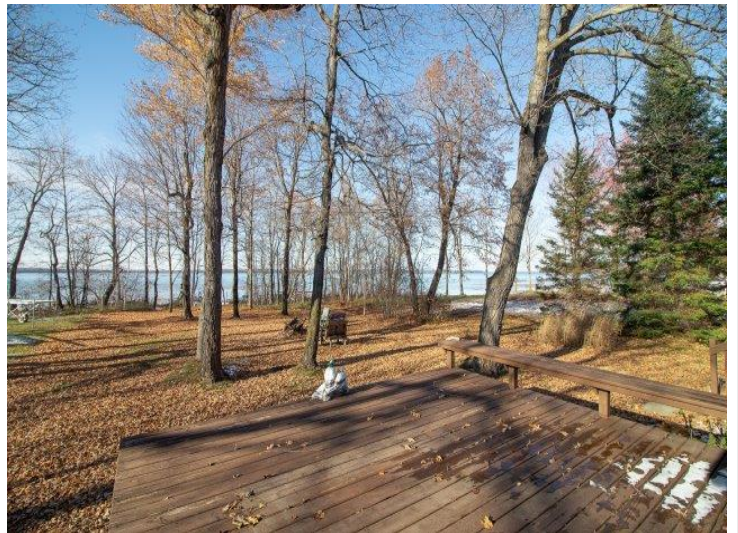
\$449,000
MLS 6495235 Lake Home
2946 Moose Lane
Cass Lake MN 56633



website: www.AffinityRealEstate.com | email: info@affinityrealestate.com | office: 218-237-3333 | fax: 218-237-3377



\$449,000
 MLS 6495235 Lake Home
 2946 Moose Lane
 Cass Lake MN 56633



website: www.AffinityRealEstate.com | email: info@affinityrealestate.com | office: 218-237-3333 | fax: 218-237-3377



\$449,000
MLS 6495235 Lake Home
2946 Moose Lane
Cass Lake MN 56633



website: www.AffinityRealEstate.com | email: info@affinityrealestate.com | office: 218-237-3333 | fax: 218-237-3377



\$449,000
MLS 6495235 Lake Home
2946 Moose Lane
Cass Lake MN 56633



website: www.AffinityRealEstate.com | email: info@affinityrealestate.com | office: 218-237-3333 | fax:218-237-3377



\$449,000
MLS 6495235 Lake Home
2946 Moose Lane
Cass Lake MN 56633