



MLS 6495301 Land

\$48,800

1.15 Acres
Subdivided

TBD Acorn Ridge Road
Bemidji MN 56601

Status: Active

Description:

Check out this hidden gem: 1.15 acres where you can let your imagination run wild. It's a blank canvas, encircled by trees and quiet, yet close enough to town when you need it. Paved roads make the trip easy. Dream up your perfect place and make it a reality right here! Check out this hidden gem, located in Northern Township in a beautiful new development!

Additional Details:

Lot Acres	1.15
Lot Dimensions	154x230x267x341
School District	31
Taxes	\$166
Taxes with Assessments	\$166
Tax Year	2023

Additional Features:

Driving Directions:

North on Irvine Ave, West on Whiting Rd NW, North on Acorn Ridge Rd NW.



Listed By:
Coldwell Banker Crown Realtors

Affinity Real Estate Inc. participates in the Regional Multiple Listing Service of Minnesota, Inc Broker Reciprocity (sm) program, allowing us to display other broker's listings on our website. All properties are subject to prior sale, change or withdrawal.



Call Affinity Real Estate

218-237-3333

info@affinityrealestate.com



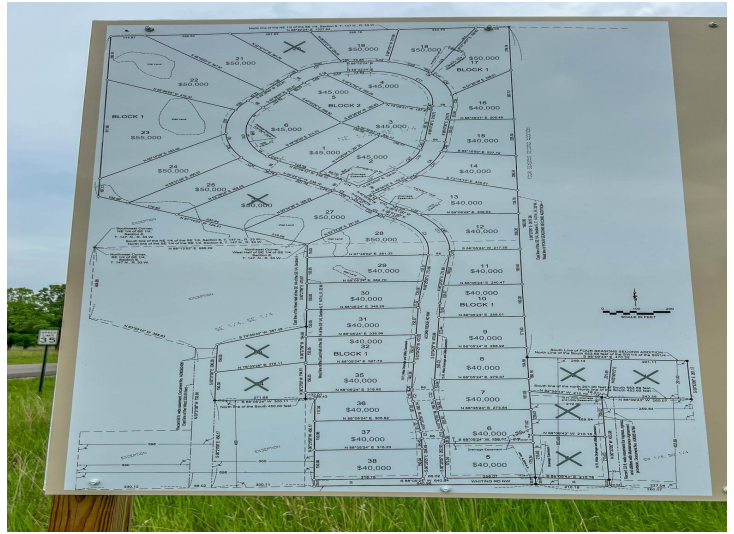
Affinity Real Estate - 600 Park Avenue South - Park Rapids MN 56470



website: www.AffinityRealEstate.com | email: info@affinityrealestate.com | office: 218-237-3333 | fax:218-237-3377



\$48,800
MLS 6495301 Land
TBD Acorn Ridge Road
Bemidji MN 56601



website: www.AffinityRealEstate.com | email: info@affinityrealestate.com | office: 218-237-3333 | fax:218-237-3377



\$48,800
MLS 6495301 Land
TBD Acorn Ridge Road
Bemidji MN 56601



website: www.AffinityRealEstate.com | email: info@affinityrealestate.com | office: 218-237-3333 | fax:218-237-3377



\$48,800

MLS 6495301 Land
TBD Acorn Ridge Road
Bemidji MN 56601