



MLS 6496040 Land

\$649,900

3.76 Acres
Raw Land

TBD Bergquist Dr
Pequot Lakes MN 56472

Status: Active

Description:

Come check out this highly sought after parcel. This piece has great commercial opportunity. Perfectly located in the town of Pequot Lakes right off of 371. Come start your new business in the heart of lakes country.

Additional Details:

Lot Acres	3.76
Lot Dimensions	341x612x205x338x129
School District	186
Taxes	\$726
Taxes with Assessments	\$726
Tax Year	2023

Additional Features:

Driving Directions:

heading north i highway 371 turn west on highway 11, then turn Right on Bergquist drive.



Listed By:
Realty Group LLC

Affinity Real Estate Inc. participates in the Regional Multiple Listing Service of Minnesota, Inc Broker Reciprocity (sm) program, allowing us to display other broker's listings on our website. All properties are subject to prior sale, change or withdrawal.



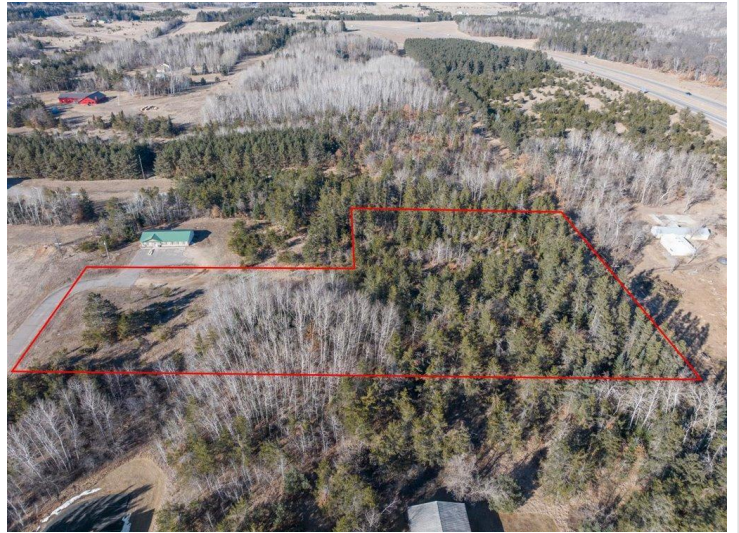
Call Affinity Real Estate

218-237-3333

info@affinityrealestate.com



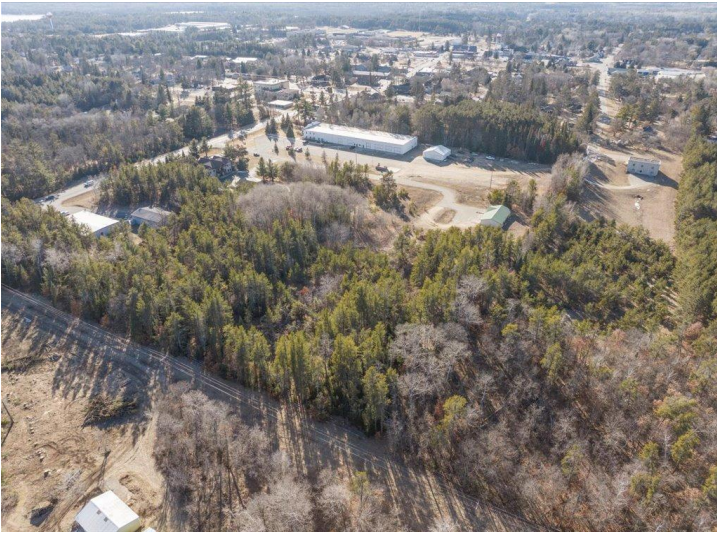
Affinity Real Estate - 600 Park Avenue South - Park Rapids MN 56470



website: www.AffinityRealEstate.com | email: info@affinityrealestate.com | office: 218-237-3333 | fax:218-237-3377



\$649,900
MLS 6496040 Land
TBD Bergquist Dr
Pequot Lakes MN 56472



website: www.AffinityRealEstate.com | email: info@affinityrealestate.com | office: 218-237-3333 | fax:218-237-3377



\$649,900
MLS 6496040 Land
TBD Bergquist Dr
Pequot Lakes MN 56472