



MLS 6496132 Residential

\$184,999

1,248 sq ft
2 bedrooms
1 baths

485 Cr-12
Akeley MN 56433

Status: Pending

Description:

Check out this 2 bed, 1 bath ranch style house nestled on the outskirts of Akeley! Use this house as your permanent residence or as a getaway cabin! The location really is everything. Located just 3 blocks from the Heartland walking and ATV trail, 1/2 mile from 11th Crow Wing Lake and many other lakes nearby! Situated on two lots makes this house have so much room for outdoor fun! Enjoy the yard from the covered porch. Schedule a showing today with your favorite realtor!

Additional Details:

Year Built	2021
Lot Acres	0.4
Lot Dimensions	TBD
School District	113
Taxes	\$478
Taxes with Assessments	\$478
Tax Year	2023

Additional Features:

Basement: Slab **Fuel:** Propane **Heat:** Baseboard **Sewer:** City Sewer/Connected **Water:** City Water/Connected **Air Conditioning:** Ductless Mini-Split

Driving Directions:

From Hwy 34 turn south on Franklin Ave SE in Akeley, turn west on County Rd 12, destination is on the north side of the road.



Listed By:
Keller Williams Inspire Realty

Affinity Real Estate Inc. participates in the Regional Multiple Listing Service of Minnesota, Inc Broker Reciprocity (sm) program, allowing us to display other broker's listings on our website. All properties are subject to prior sale, change or withdrawal.



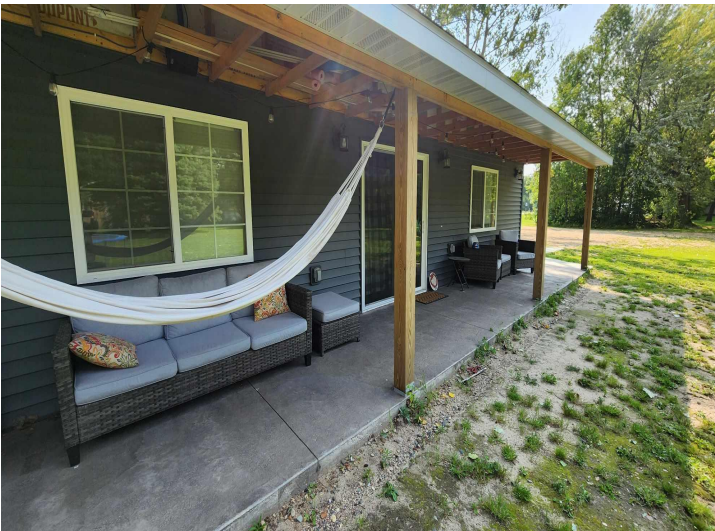
Call Affinity Real Estate

218-237-3333

info@affinityrealestate.com



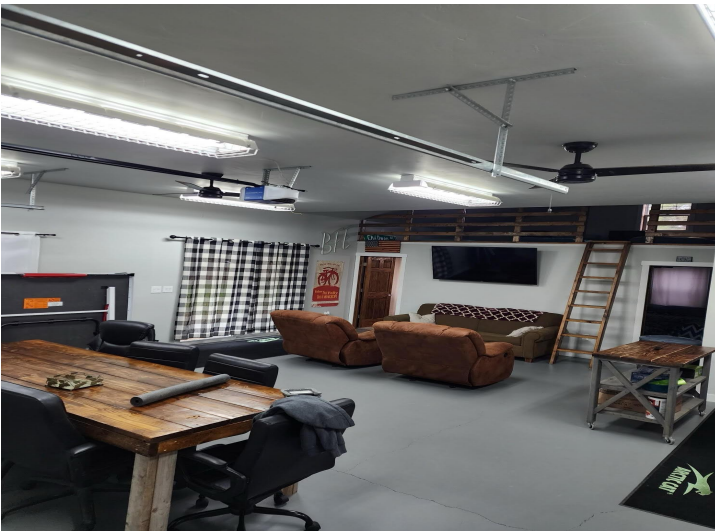
Affinity Real Estate - 600 Park Avenue South - Park Rapids MN 56470



website: www.AffinityRealEstate.com | email: info@affinityrealestate.com | office: 218-237-3333 | fax: 218-237-3377



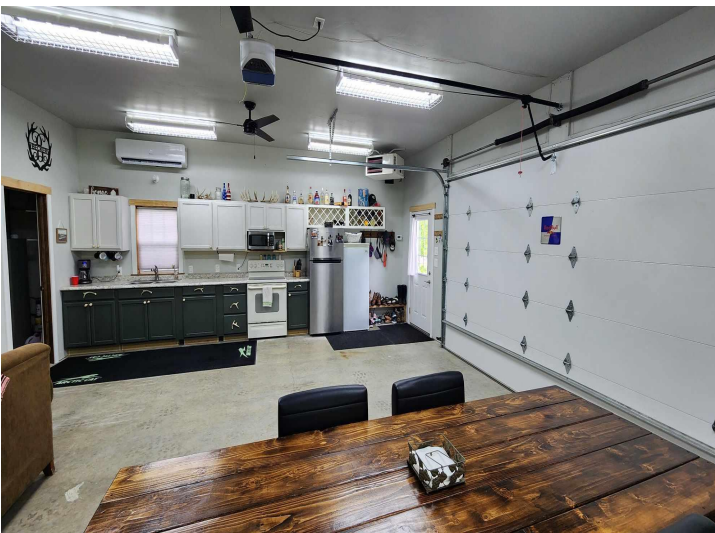
\$184,999
MLS 6496132 Residential
485 Cr-12
Akeley MN 56433



website: www.AffinityRealEstate.com | email: info@affinityrealestate.com | office: 218-237-3333 | fax: 218-237-3377

Affinity
REAL ESTATE INC

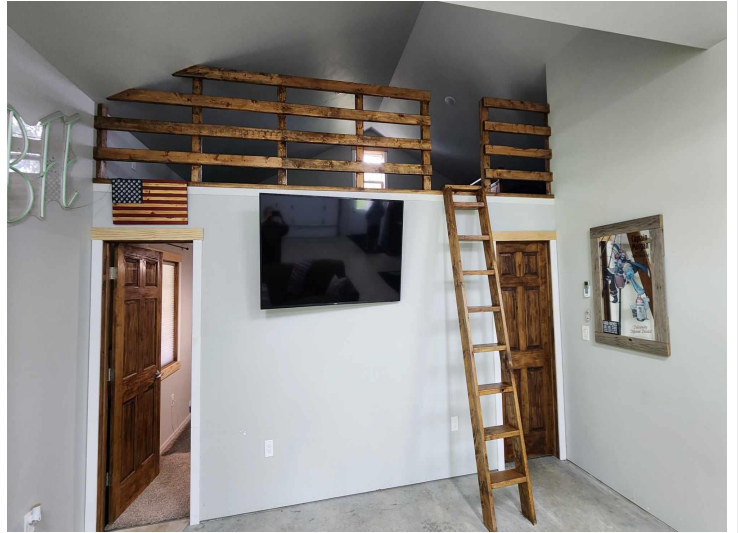
\$184,999
MLS 6496132 Residential
485 Cr-12
Akeley MN 56433



website: www.AffinityRealEstate.com | email: info@affinityrealestate.com | office: 218-237-3333 | fax: 218-237-3377

Affinity
REAL ESTATE INC

\$184,999
MLS 6496132 Residential
485 Cr-12
Akeley MN 56433



website: www.AffinityRealEstate.com | email: info@affinityrealestate.com | office: 218-237-3333 | fax: 218-237-3377

Affinity
REAL ESTATE INC

\$184,999
MLS 6496132 Residential
485 Cr-12
Akeley MN 56433



website: www.AffinityRealEstate.com | email: info@affinityrealestate.com | office: 218-237-3333 | fax: 218-237-3377



\$184,999
MLS 6496132 Residential
485 Cr-12
Akeley MN 56433



website: www.AffinityRealEstate.com | email: info@affinityrealestate.com | office: 218-237-3333 | fax: 218-237-3377



\$184,999
 MLS 6496132 Residential
 485 Cr-12
 Akeley MN 56433