



MLS 6496607 Lake Land

\$215,000

Description:

SANDY LEVEL SWIMMING ON LONG LAKE IN DETROIT LAKES. 40'x70' LAKE LOT in LAKECREST ESTATES. Bring your builder and your plans and start enjoying lake life at its finest. This lot sits at the North end of this common interest community with over 10 acres, large green space, shared tennis court, pickle ball court, basketball court, fish cleaning house, laundry building, community building for events, 300+' of sandy shoreline, dock & boat slip. HOA fees are \$2400/ annually which includes, mowing, snow removal, docks, common ground and beach maintenance. Spacious environment and excellent location. 30x40 on premise storage units available for an additional cost. City water/sewer--no special assessments.

Additional Details:

Lot Acres	0.06
Lot Dimensions	40x70
School District	22
Taxes	\$2,114
Taxes with Assessments	\$2,176
Tax Year	2024

Additional Features:

Driving Directions:

US Hwy 10 to 2359



Listed By:
RE/MAX LAKES REGION

Affinity Real Estate Inc. participates in the Regional Multiple Listing Service of Minnesota, Inc Broker Reciprocity (sm) program, allowing us to display other broker's listings on our website. All properties are subject to prior sale, change or withdrawal.



Call Affinity Real Estate

218-237-3333

info@affinityrealestate.com



Affinity Real Estate - 600 Park Avenue South - Park Rapids MN 56470



website: www.AffinityRealEstate.com | email: info@affinityrealestate.com | office: 218-237-3333 | fax:218-237-3377

Affinity
REAL ESTATE INC

\$215,000
MLS 6496607 Lake Land
2359 US Hwy 10
Detroit Lakes MN 56501



website: www.AffinityRealEstate.com | email: info@affinityrealestate.com | office: 218-237-3333 | fax: 218-237-3377

Affinity
REAL ESTATE INC

\$215,000
MLS 6496607 Lake Land
2359 US Hwy 10
Detroit Lakes MN 56501



website: www.AffinityRealEstate.com | email: info@affinityrealestate.com | office: 218-237-3333 | fax:218-237-3377



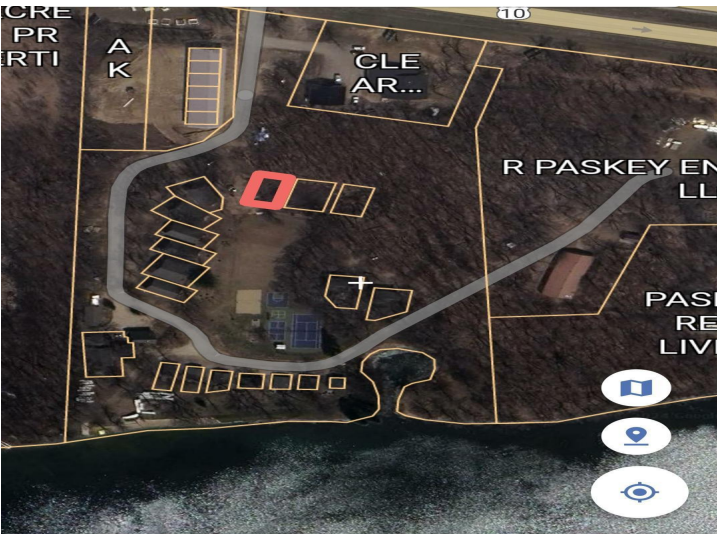
\$215,000
MLS 6496607 Lake Land
2359 US Hwy 10
Detroit Lakes MN 56501



website: www.AffinityRealEstate.com | email: info@affinityrealestate.com | office: 218-237-3333 | fax:218-237-3377



\$215,000
MLS 6496607 Lake Land
2359 US Hwy 10
Detroit Lakes MN 56501



website: www.AffinityRealEstate.com | email: info@affinityrealestate.com | office: 218-237-3333 | fax:218-237-3377



\$215,000
 MLS 6496607 Lake Land
 2359 US Hwy 10
 Detroit Lakes MN 56501



website: www.AffinityRealEstate.com | email: info@affinityrealestate.com | office: 218-237-3333 | fax:218-237-3377



\$215,000
MLS 6496607 Lake Land
2359 US Hwy 10
Detroit Lakes MN 56501



website: www.AffinityRealEstate.com | email: info@affinityrealestate.com | office: 218-237-3333 | fax:218-237-3377

Affinity
REAL ESTATE INC

\$215,000
MLS 6496607 Lake Land
2359 US Hwy 10
Detroit Lakes MN 56501



website: www.AffinityRealEstate.com | email: info@affinityrealestate.com | office: 218-237-3333 | fax:218-237-3377



\$215,000
MLS 6496607 Lake Land
2359 US Hwy 10
Detroit Lakes MN 56501



website: www.AffinityRealEstate.com | email: info@affinityrealestate.com | office: 218-237-3333 | fax:218-237-3377



\$215,000
MLS 6496607 Lake Land
2359 US Hwy 10
Detroit Lakes MN 56501