



MLS 6496619 Residential

\$339,000

3,190 sq ft
3 bedrooms
4 baths

31606 Mystic Drive
Laporte MN 56461

Status: Active

Description:

Do you want privacy along with the convenience of getting to town in 10 minutes? This property boasts over 33 acres of beautiful trails to explore and joins several more hundreds of federal land. Large home, 2 family rooms to entertain, 3 bedrooms, 4 bathrooms, and a partially finished basement. Multiple RV sites and camping sites with water and electricity make for plenty of room for extra hunters and family to visit. The bonuses are a 30x40 pole barn and a chicken coop! Could be an ideal property for the next hobby farm seeker!

Additional Details:

Year Built	2003
Lot Acres	33.57
Lot Dimensions	615x315x700x875x620
Garage Stalls	2
School District	306
Taxes	\$2,096
Taxes with Assessments	\$2,096
Tax Year	2024

Additional Features:

Fuel: Propane, Wood **Heat:** Forced Air, Fireplace(s), Wood Stove

Driving Directions:

From Walker, MN-371 NW for 4 miles, turn left on State Hwy 200, proceed 2.7 miles and turn left at County 38. Go 0.4 miles on County 38 and turn right on County 39, go 2 miles and turn right on Musky Drive, turn left on Mystic Lane, property is second on the left.



Listed By:
Bill Hansen Realty/Walker

Affinity Real Estate Inc. participates in the Regional Multiple Listing Service of Minnesota, Inc Broker Reciprocity (sm) program, allowing us to display other broker's listings on our website. All properties are subject to prior sale, change or withdrawal.



Call Affinity Real Estate

218-237-3333

info@affinityrealestate.com



Affinity Real Estate - 600 Park Avenue South - Park Rapids MN 56470



website: www.AffinityRealEstate.com | email: info@affinityrealestate.com | office: 218-237-3333 | fax: 218-237-3377



\$339,000
 MLS 6496619 Residential
 31606 Mystic Drive
 Laporte MN 56461



website: www.AffinityRealEstate.com | email: info@affinityrealestate.com | office: 218-237-3333 | fax: 218-237-3377



\$339,000
 MLS 6496619 Residential
 31606 Mystic Drive
 Laporte MN 56461



website: www.AffinityRealEstate.com | email: info@affinityrealestate.com | office: 218-237-3333 | fax: 218-237-3377

Affinity
REAL ESTATE INC

\$339,000
MLS 6496619 Residential
31606 Mystic Drive
Laporte MN 56461



website: www.AffinityRealEstate.com | email: info@affinityrealestate.com | office: 218-237-3333 | fax: 218-237-3377

Affinity
REAL ESTATE INC

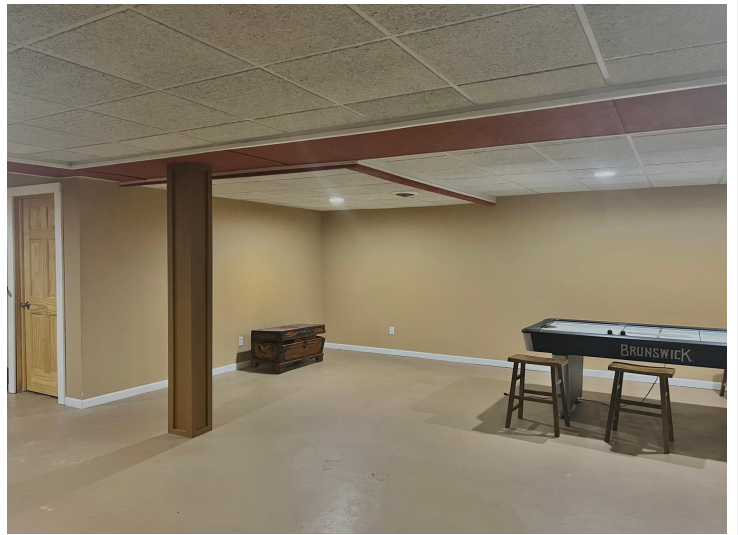
\$339,000
MLS 6496619 Residential
31606 Mystic Drive
Laporte MN 56461



website: www.AffinityRealEstate.com | email: info@affinityrealestate.com | office: 218-237-3333 | fax: 218-237-3377

Affinity
REAL ESTATE INC

\$339,000
MLS 6496619 Residential
31606 Mystic Drive
Laporte MN 56461



website: www.AffinityRealEstate.com | email: info@affinityrealestate.com | office: 218-237-3333 | fax: 218-237-3377



\$339,000
MLS 6496619 Residential
31606 Mystic Drive
Laporte MN 56461