



MLS 6496953 Lake Home

\$414,900

2,770 sq ft
4 bedrooms
3 baths

3696 Upper Roy Lake Road
Nisswa MN 56468

Waterfront: Fawn Lake (Nisswa
City)

Status: Active

Description:

Discover the epitome of comfort and style in the desired Fawn Ridge Development located 2 miles NW of Downtown Nisswa. This is your 4 BR, 3 BA, 3 stall insulated garage with that in the middle of the woods feel. This home boasts stainless steel appliances, vaulted ceilings, and custom cabinets, and tons of storage creating a perfect blend of modern luxury and functionality. 2 bedrooms up, both with walk in closets and one with ensuite bathroom. Entertain effortlessly in the full finished walkout basement with new carpet throughout or on the deck overlooking your private landscaped backyard. Enjoy this serene park-like setting, with 25+ acres of common ground with trails throughout. Don't forget your private deeded access to Fawn (day dock and fishing dock), Edna, and Hidden Lake (fishing dock). Setup your showing today. You will love the close proximity to 12+ lakes, shopping and dining, and don't forget the Paul Bunyan Trail!

Additional Details:

Year Built	2016
Lot Acres	0.46
Lot Dimensions	182x100x186x128
Garage Stalls	3
School District	181
Taxes	\$2,939
Taxes with Assessments	\$2,964
Tax Year	2024

Additional Features:

Basement: Block, Daylight/Lookout Windows, Egress Window(s), Finished, Full, Walkout **Fuel:** Natural Gas **Garage:** 3 **Heat:** Forced Air
Sewer: Private Sewer, Tank with Drainage Field **Water:** Drilled, Well **Air Conditioning:** Central Air

Driving Directions:

From Nisswa, go North on Hwy 371, turn Left on Upper Roy Lake Road, to home on Right.



Listed By:
eXp Realty

Affinity Real Estate Inc. participates in the Regional Multiple Listing Service of Minnesota, Inc Broker Reciprocity (sm) program, allowing us to display other broker's listings on our website. All properties are subject to prior sale, change or withdrawal.



Call Affinity Real Estate

218-237-3333

info@affinityrealestate.com



Affinity Real Estate - 600 Park Avenue South - Park Rapids MN 56470



website: www.AffinityRealEstate.com | email: info@affinityrealestate.com | office: 218-237-3333 | fax: 218-237-3377



\$414,900
 MLS 6496953 Lake Home
 3696 Upper Roy Lake Road
 Nisswa MN 56468



website: www.AffinityRealEstate.com | email: info@affinityrealestate.com | office: 218-237-3333 | fax: 218-237-3377

Affinity
REAL ESTATE INC

\$414,900
MLS 6496953 Lake Home
3696 Upper Roy Lake Road
Nisswa MN 56468



website: www.AffinityRealEstate.com | email: info@affinityrealestate.com | office: 218-237-3333 | fax: 218-237-3377



\$414,900
 MLS 6496953 Lake Home
 3696 Upper Roy Lake Road
 Nisswa MN 56468



website: www.AffinityRealEstate.com | email: info@affinityrealestate.com | office: 218-237-3333 | fax: 218-237-3377

Affinity
REAL ESTATE INC

\$414,900
MLS 6496953 Lake Home
3696 Upper Roy Lake Road
Nisswa MN 56468



website: www.AffinityRealEstate.com | email: info@affinityrealestate.com | office: 218-237-3333 | fax: 218-237-3377



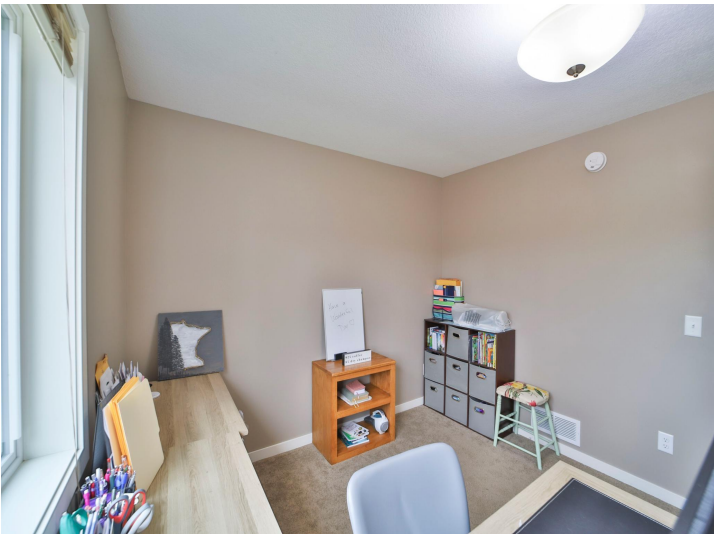
\$414,900
MLS 6496953 Lake Home
3696 Upper Roy Lake Road
Nisswa MN 56468



website: www.AffinityRealEstate.com | email: info@affinityrealestate.com | office: 218-237-3333 | fax: 218-237-3377

Affinity
REAL ESTATE INC

\$414,900
MLS 6496953 Lake Home
3696 Upper Roy Lake Road
Nisswa MN 56468



website: www.AffinityRealEstate.com | email: info@affinityrealestate.com | office: 218-237-3333 | fax: 218-237-3377



\$414,900
MLS 6496953 Lake Home
3696 Upper Roy Lake Road
Nisswa MN 56468



website: www.AffinityRealEstate.com | email: info@affinityrealestate.com | office: 218-237-3333 | fax: 218-237-3377



\$414,900
MLS 6496953 Lake Home
3696 Upper Roy Lake Road
Nisswa MN 56468



website: www.AffinityRealEstate.com | email: info@affinityrealestate.com | office: 218-237-3333 | fax: 218-237-3377



\$414,900
MLS 6496953 Lake Home
3696 Upper Roy Lake Road
Nisswa MN 56468