



MLS 6496958 Residential

**\$239,900**

1,122 sq ft  
2 bedrooms  
2 baths

1615 30th Street  
Bemidji MN 56601

Status: Active

**Description:**

Wonderful end unit at Northridge Cottages offers 2 bedrooms and 1.5 baths all on one level. This townhome features a primary ensuite with shower, walk-in closet, and laundry. Open floor plan with nice natural light, ample kitchen space and a heated single stall garage. Nice care fee living with the association taking care of the lawn care and snow removal.

**Additional Details:**

Year Built	2016
Lot Acres	0.03
Lot Dimensions	33x41
Garage Stalls	1
School District	31
Taxes	\$2,808
Taxes with Assessments	\$2,808
Tax Year	2023

**Additional Features:**

**Basement:** None **Fuel:** Natural Gas **Garage:** 1 **Heat:** Forced Air **Sewer:** City Sewer/Connected **Water:** City Water/Connected **Air Conditioning:** Central Air

**Driving Directions:**

From Paul Bunyan DR NW, turn right onto Ridgeway Ave NW, turn left onto 30th St NW and North Ridge Cottages will be on your right.



Listed By:  
Coldwell Banker Crown Realtors

Affinity Real Estate Inc. participates in the Regional Multiple Listing Service of Minnesota, Inc Broker Reciprocity (sm) program, allowing us to display other broker's listings on our website. All properties are subject to prior sale, change or withdrawal.



**Call Affinity Real Estate**

**218-237-3333**

**info@affinityrealestate.com**



**Affinity Real Estate - 600 Park Avenue South - Park Rapids MN 56470**



website: [www.AffinityRealEstate.com](http://www.AffinityRealEstate.com) | email: [info@affinityrealestate.com](mailto:info@affinityrealestate.com) | office: 218-237-3333 | fax: 218-237-3377

**Affinity**  
REAL ESTATE INC

**\$239,900**  
MLS 6496958 Residential  
1615 30th Street  
Bemidji MN 56601





website: [www.AffinityRealEstate.com](http://www.AffinityRealEstate.com) | email: [info@affinityrealestate.com](mailto:info@affinityrealestate.com) | office: 218-237-3333 | fax: 218-237-3377



**\$239,900**  
MLS 6496958 Residential  
1615 30th Street  
Bemidji MN 56601





website: [www.AffinityRealEstate.com](http://www.AffinityRealEstate.com) | email: [info@affinityrealestate.com](mailto:info@affinityrealestate.com) | office: 218-237-3333 | fax: 218-237-3377

**Affinity**  
REAL ESTATE INC

**\$239,900**  
MLS 6496958 Residential  
1615 30th Street  
Bemidji MN 56601





website: [www.AffinityRealEstate.com](http://www.AffinityRealEstate.com) | email: [info@affinityrealestate.com](mailto:info@affinityrealestate.com) | office: 218-237-3333 | fax: 218-237-3377

**Affinity**  
REAL ESTATE INC

**\$239,900**  
MLS 6496958 Residential  
1615 30th Street  
Bemidji MN 56601



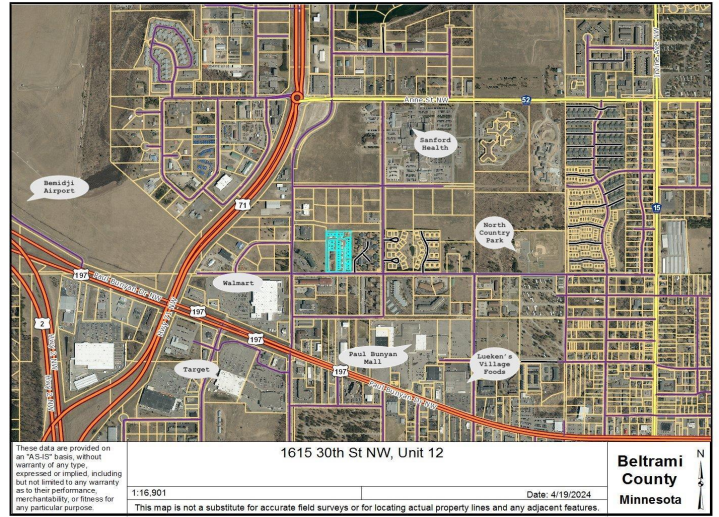
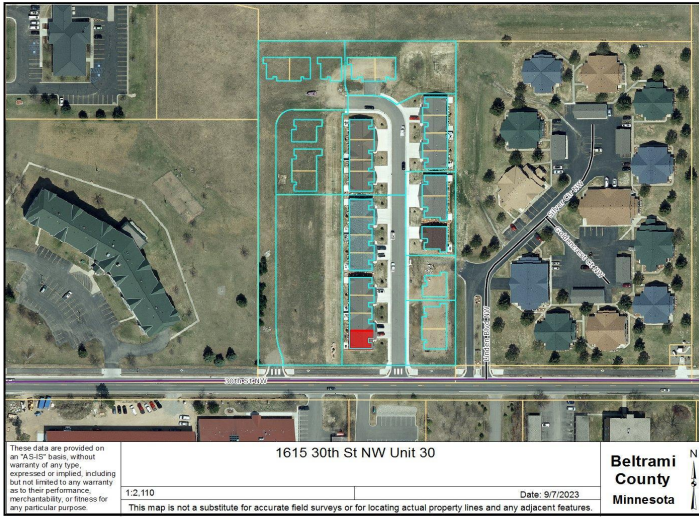


website: [www.AffinityRealEstate.com](http://www.AffinityRealEstate.com) | email: [info@affinityrealestate.com](mailto:info@affinityrealestate.com) | office: 218-237-3333 | fax: 218-237-3377



**\$239,900**  
 MLS 6496958 Residential  
 1615 30th Street  
 Bemidji MN 56601





website: [www.AffinityRealEstate.com](http://www.AffinityRealEstate.com) | email: [info@affinityrealestate.com](mailto:info@affinityrealestate.com) | office: 218-237-3333 | fax: 218-237-3377



**\$239,900**  
 MLS 6496958 Residential  
 1615 30th Street  
 Bemidji MN 56601