



MLS 6498684 Residential

\$205,000

1 sq ft
1 bedrooms
1 baths

14413 Blueberry Bridge Road
Menahga MN 56464

Status: Active

Description:

Blueberry Lake – Incredible Potential!

Set on a spacious 1.45-acre lot with 265 feet of west-facing frontage, this property is ready for your vision. The full block walkout basement already includes space for a bedroom, bathroom, kitchen, and living room—giving you a strong head start to create your dream lake place. With 150-amp electric service, a deep well, and septic system already in place, much of the groundwork is complete.

Enjoy stunning Minnesota sunsets over the water and the convenience of being just minutes from town.

Bring your ideas and make this Blueberry Lake property your perfect retreat—schedule a showing today!

Additional Details:

Year Built	1991
Lot Acres	1.43
Lot Dimensions	Irregular
School District	2286
Taxes	\$1,534
Taxes with Assessments	\$1,594
Tax Year	2025

Additional Features:

Fuel: Array **Heat:** Space Heater

Driving Directions:

From Hwys. 71/34 in Park Rapids, go 7.2 miles south on Hwy 71, turn left on 129th Ave (Blueberry Ridge Road). Follow for 2.4 miles to property on right.



Listed By:
Coldwell Banker Crown Realtors

Affinity Real Estate Inc. participates in the Regional Multiple Listing Service of Minnesota, Inc Broker Reciprocity (sm) program, allowing us to display other broker's listings on our website. All properties are subject to prior sale, change or withdrawal.



Call Affinity Real Estate

218-237-3333

info@affinityrealestate.com



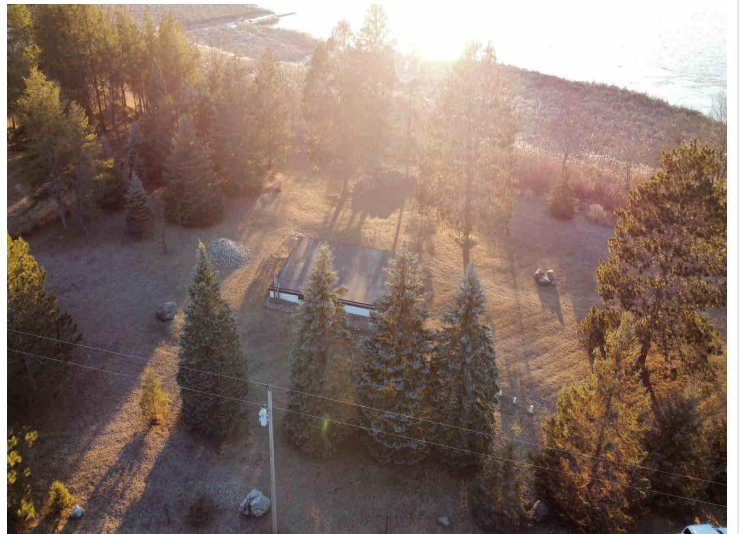
Affinity Real Estate - 600 Park Avenue South - Park Rapids MN 56470



website: www.AffinityRealEstate.com | email: info@affinityrealestate.com | office: 218-237-3333 | fax: 218-237-3377



\$205,000
 MLS 6498684 Residential
 14413 Blueberry Bridge
 Road
 Menahga MN 56464



website: www.AffinityRealEstate.com | email: info@affinityrealestate.com | office: 218-237-3333 | fax: 218-237-3377



\$205,000

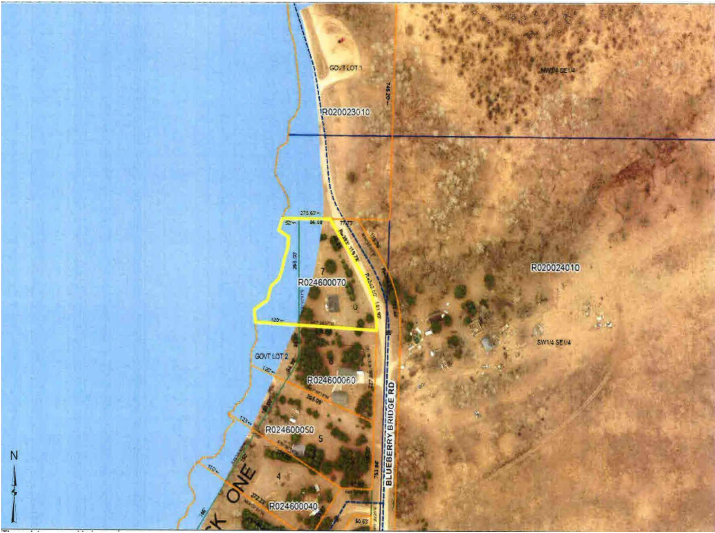
MLS 6498684 Residential
14413 Blueberry Bridge
Road
Menahga MN 56464



website: www.AffinityRealEstate.com | email: info@affinityrealestate.com | office: 218-237-3333 | fax: 218-237-3377



\$205,000
 MLS 6498684 Residential
 14413 Blueberry Bridge
 Road
 Menahga MN 56464



website: www.AffinityRealEstate.com | email: info@affinityrealestate.com | office: 218-237-3333 | fax: 218-237-3377



\$205,000
 MLS 6498684 Residential
 14413 Blueberry Bridge
 Road
 Menahga MN 56464

website: www.AffinityRealEstate.com | email: info@affinityrealestate.com | office: 218-237-3333 | fax:218-237-3377



\$205,000

MLS 6498684 Residential
14413 Blueberry Bridge
Road
Menahga MN 56464