



MLS 6498847 Residential

\$449,000

2,090 sq ft
5 bedrooms
3 baths

16620 County Highway 38
Frazee MN 56544

Status: Active

Description:

Beautiful home w/approx. 28 acres & an easy commute to Detroit Lakes/Park Rapids. 5 beds./ +office / 3 baths. Home built in 2012, addition in 2019. Massive entry w/ phenomenal built-ins welcomes you into this lovely home w/ an attached 2 stall heated garage (in floor electric boiler heat +mounted electric heater in garage) w/floor drain. Step into the primary suite: Walk-in closet & its own 3/4 bath. w/tile shower. Nearing the primary bedroom includes two more bedrooms. The laundry, 3/4 bathroom, kitchen, dining room & living room are the perfect mix centrally located in the home. Upstairs features- 2 beds. plus an office & a full bathroom. Things to love- Gas forced air heat, central air conditioning w/heat pump, LP Smart siding & the adorable covered deck overlooking nature at its finest. Outdoor Fun- Skating area w/warming house, outdoor sauna, fenced area for your critters w/ chicken coop & loafing shed, wooded land to snag a big buck, & approx. 1/2 mile to the Wolf Lake access!

Additional Details:

Year Built	2012
Lot Acres	28
Lot Dimensions	Irregular
Garage Stalls	2
School District	821
Taxes	\$2,172
Taxes with Assessments	\$2,232
Tax Year	2023

Additional Features:

Fuel: Electric, Propane **Heat:** Forced Air, Heat Pump, Radiant Floor

Driving Directions:

From Richwood Rd & Hwy 34- Take State Highway 34 (MN-34). Go for 13.1 mi.
Turn right onto County Highway 39 (CR-39) toward Wolf Lake. Go for 3.0 mi.
Turn left onto County Highway 38 (CR-38) toward Wolf Lake. Go for 5.6 mi. Property on the right.



Listed By:
Keller Williams Realty Professionals

Affinity Real Estate Inc. participates in the Regional Multiple Listing Service of Minnesota, Inc Broker Reciprocity (sm) program, allowing us to display other broker's listings on our website. All properties are subject to prior sale, change or withdrawal.



Call Affinity Real Estate

218-237-3333

info@affinityrealestate.com



Affinity Real Estate - 600 Park Avenue South - Park Rapids MN 56470



website: www.AffinityRealEstate.com | email: info@affinityrealestate.com | office: 218-237-3333 | fax: 218-237-3377

Affinity
REAL ESTATE INC

\$449,000
MLS 6498847 Residential
16620 County Highway 38
Frazee MN 56544



website: www.AffinityRealEstate.com | email: info@affinityrealestate.com | office: 218-237-3333 | fax: 218-237-3377



\$449,000
MLS 6498847 Residential
16620 County Highway 38
Frazee MN 56544

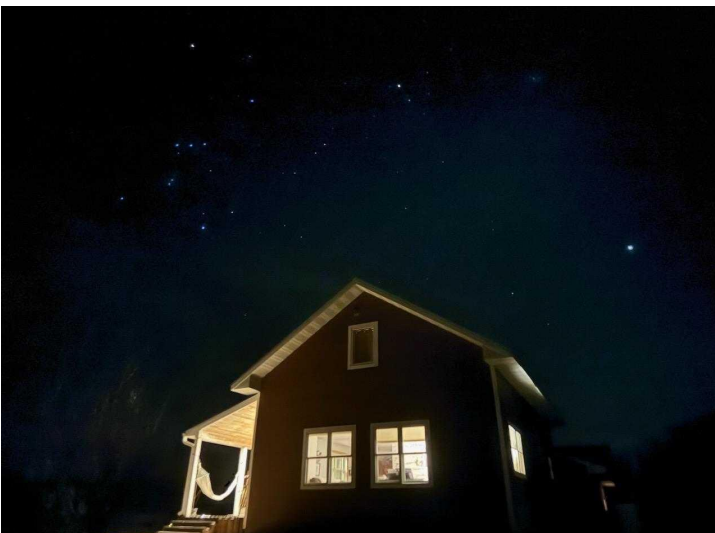
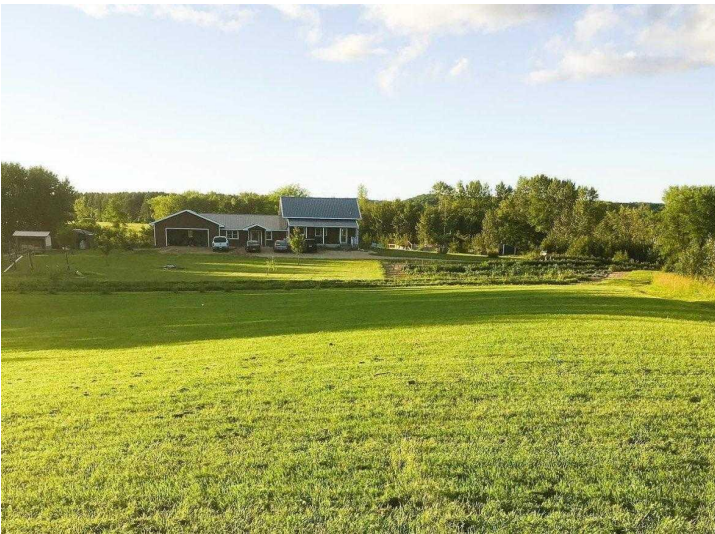


website: www.AffinityRealEstate.com | email: info@affinityrealestate.com | office: 218-237-3333 | fax: 218-237-3377



\$449,000

MLS 6498847 Residential
16620 County Highway 38
Frazee MN 56544



website: www.AffinityRealEstate.com | email: info@affinityrealestate.com | office: 218-237-3333 | fax: 218-237-3377

Affinity
REAL ESTATE INC

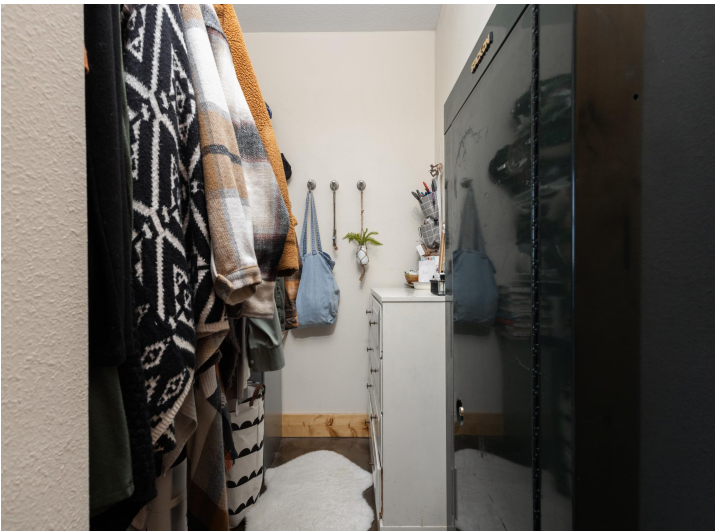
\$449,000
MLS 6498847 Residential
16620 County Highway 38
Frazee MN 56544



website: www.AffinityRealEstate.com | email: info@affinityrealestate.com | office: 218-237-3333 | fax: 218-237-3377

Affinity
REAL ESTATE INC

\$449,000
MLS 6498847 Residential
16620 County Highway 38
Frazee MN 56544



website: www.AffinityRealEstate.com | email: info@affinityrealestate.com | office: 218-237-3333 | fax: 218-237-3377

Affinity
REAL ESTATE INC

\$449,000
MLS 6498847 Residential
16620 County Highway 38
Frazee MN 56544



website: www.AffinityRealEstate.com | email: info@affinityrealestate.com | office: 218-237-3333 | fax: 218-237-3377



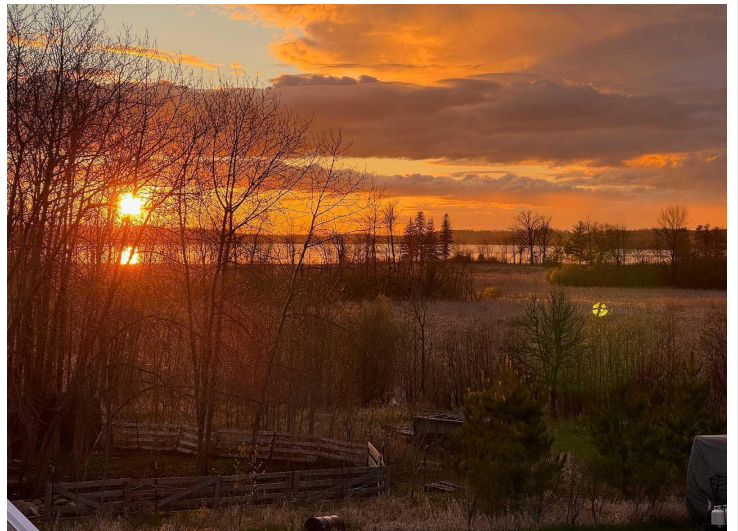
\$449,000
 MLS 6498847 Residential
 16620 County Highway 38
 Frazee MN 56544



website: www.AffinityRealEstate.com | email: info@affinityrealestate.com | office: 218-237-3333 | fax: 218-237-3377

Affinity
REAL ESTATE INC

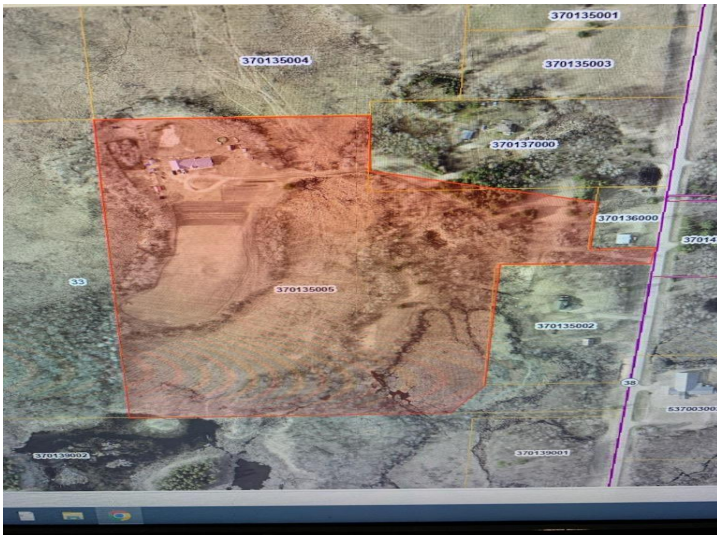
\$449,000
MLS 6498847 Residential
16620 County Highway 38
Frazee MN 56544



website: www.AffinityRealEstate.com | email: info@affinityrealestate.com | office: 218-237-3333 | fax: 218-237-3377



\$449,000
 MLS 6498847 Residential
 16620 County Highway 38
 Frazee MN 56544



website: www.AffinityRealEstate.com | email: info@affinityrealestate.com | office: 218-237-3333 | fax:218-237-3377



\$449,000

MLS 6498847 Residential
16620 County Highway 38
Frazee MN 56544