



MLS 6499476 Lake Land

\$94,900

Description:

Come enjoy the sunsets from this west facing lot. 2.69 acres and 532' of lakeshore on Owl Lake. Great tree cover, building site to build your year round home or seasonal cabin with gradual elevation down to the water. Lot has been surveyed with corners marked. Situated on a tar drive.

Additional Details:

Lot Acres	2.69
Lot Dimensions	532x619x115x352
School District	308
Taxes	\$484
Taxes with Assessments	\$484
Tax Year	2023

Additional Features:

Driving Directions:

From 34/71 in Park Rapids, East on 34 to a right on 269th Ave to a left on 218th to a left on Forest Pines Drive to where the blacktop starts just past the first home. Property on both sides of the road.



Listed By:
Wolff & Simon Real Estate

Affinity Real Estate Inc. participates in the Regional Multiple Listing Service of Minnesota, Inc Broker Reciprocity (sm) program, allowing us to display other broker's listings on our website. All properties are subject to prior sale, change or withdrawal.



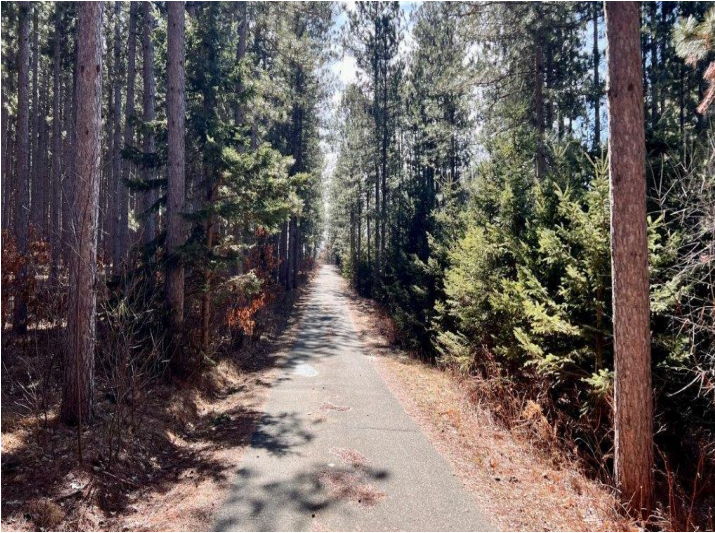
Call Affinity Real Estate

218-237-3333

info@affinityrealestate.com



Affinity Real Estate - 600 Park Avenue South - Park Rapids MN 56470



website: www.AffinityRealEstate.com | email: info@affinityrealestate.com | office: 218-237-3333 | fax: 218-237-3377



\$94,900
 MLS 6499476 Lake Land
 TBD Forest Pines Drive
 Nevis MN 56467

