



MLS 6499611 Lake Home

\$489,000

2,534 sq ft
3 bedrooms
2 baths

487 Shorewood Drive
Detroit Lakes MN 56501

Waterfront: Detroit

Status: Active

Description:

LIVE ON SHOREWOOD DRIVE AND PLAY ON DETROIT LAKE! Perched on this roomy lot is this 3 bedroom, 2 bath, 2534 sq ft home complete with a large lake facing 3 season room, expansive lake facing porch, covered back deck and fenced back yard. Lower-level family room with cozy fireplace, storage and tuck under garage. Home has exciting potential but is move-in ready so lake life can be yours sooner than later! Shorewood Drive is a convenient yet quiet area. Shared lake lot ownership is just around the corner allowing you lake access to Detroit Lake and ALL the amenities it has to offer. Year round living or easy weekend get-away, this is the place!

Additional Details:


Year Built	1981
Lot Acres	0.46
Lot Dimensions	100x200
Garage Stalls	2
School District	22
Taxes	\$3,244
Taxes with Assessments	\$3,244
Tax Year	2023

Additional Features:

Basement: Block, Finished **Fuel:** Electric **Garage:** 2 **Heat:** Baseboard **Sewer:** City Sewer/Connected **Water:** City Water/Connected **Air Conditioning:** Ductless Mini-Split

Driving Directions:

Long Bridge Road to Shorewood Dr. Follow to 487 Shorewood Dr.

 Listed By:
RE/MAX LAKES REGION

Affinity Real Estate Inc. participates in the Regional Multiple Listing Service of Minnesota, Inc Broker Reciprocity (sm) program, allowing us to display other broker's listings on our website. All properties are subject to prior sale, change or withdrawal.

 **Call Affinity Real Estate**
218-237-3333
info@affinityrealestate.com

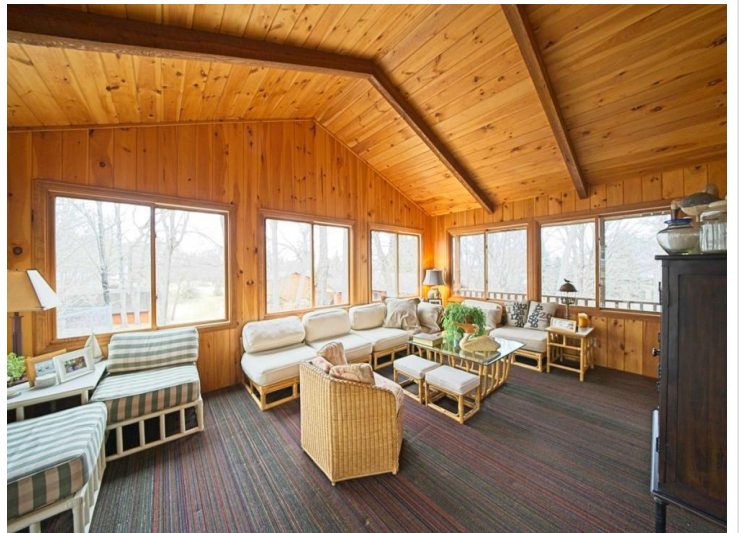
Affinity Real Estate - 600 Park Avenue South - Park Rapids MN 56470



website: www.AffinityRealEstate.com | email: info@affinityrealestate.com | office: 218-237-3333 | fax: 218-237-3377

Affinity
REAL ESTATE INC

\$489,000
MLS 6499611 Lake Home
487 Shorewood Drive
Detroit Lakes MN 56501



website: www.AffinityRealEstate.com | email: info@affinityrealestate.com | office: 218-237-3333 | fax: 218-237-3377

Affinity
REAL ESTATE INC

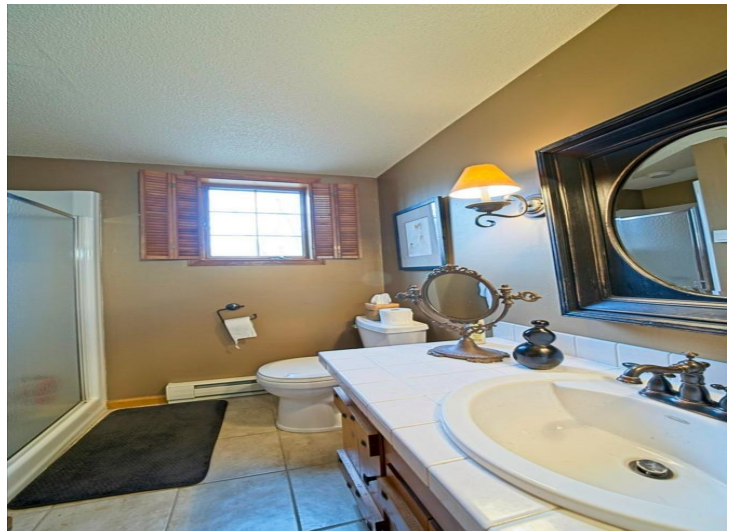
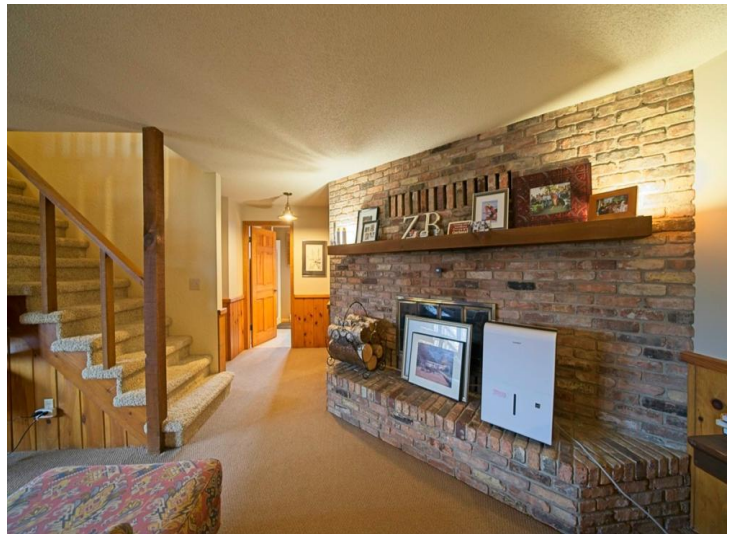
\$489,000
MLS 6499611 Lake Home
487 Shorewood Drive
Detroit Lakes MN 56501



website: www.AffinityRealEstate.com | email: info@affinityrealestate.com | office: 218-237-3333 | fax: 218-237-3377

Affinity
REAL ESTATE INC

\$489,000
MLS 6499611 Lake Home
487 Shorewood Drive
Detroit Lakes MN 56501



website: www.AffinityRealEstate.com | email: info@affinityrealestate.com | office: 218-237-3333 | fax:218-237-3377

Affinity
REAL ESTATE INC

\$489,000
MLS 6499611 Lake Home
487 Shorewood Drive
Detroit Lakes MN 56501



website: www.AffinityRealEstate.com | email: info@affinityrealestate.com | office: 218-237-3333 | fax:218-237-3377

Affinity
REAL ESTATE INC

\$489,000
MLS 6499611 Lake Home
487 Shorewood Drive
Detroit Lakes MN 56501



website: www.AffinityRealEstate.com | email: info@affinityrealestate.com | office: 218-237-3333 | fax:218-237-3377



\$489,000
MLS 6499611 Lake Home
487 Shorewood Drive
Detroit Lakes MN 56501



website: www.AffinityRealEstate.com | email: info@affinityrealestate.com | office: 218-237-3333 | fax: 218-237-3377



\$489,000
MLS 6499611 Lake Home
487 Shorewood Drive
Detroit Lakes MN 56501