



MLS 6499860 Lake Land

**\$100,000**

**Description:**

LONG LAKE LOT~North of Otter Tail Lake. This stunning property on Long Lake offers an incredible opportunity for those seeking a spacious and unrestricted lakefront retreat. With 1.68 acres of land and 150 feet of shoreline, this lot is ideal for building your dream home. Located in the heart of Otter Tail County, just north of Otter Tail Lake, this property provides a serene escape with no covenants or restrictions.

Long Lake is known for its excellent fishing opportunities, with pike, bass, panfish, and walleye abundant in its waters.

The property is equipped with power at the lot line, making it convenient for new owners to begin construction.

Whether you are looking for a weekend getaway in the beautiful lakes country or a permanent residence on a prime fishing lake, this property offers the perfect setting. Don't miss out on this rare opportunity to own a piece of paradise on Long Lake. \$100,000.

**Additional Details:**

Lot Acres	1.68
Lot Dimensions	150x400
School District	549
Taxes	\$176
Taxes with Assessments	\$176
Tax Year	2023

**Additional Features:**

**Driving Directions:**

County road 1 towards Otter Tail lake.



Listed By:  
eXp Realty

Affinity Real Estate Inc. participates in the Regional Multiple Listing Service of Minnesota, Inc Broker Reciprocity (sm) program, allowing us to display other broker's listings on our website. All properties are subject to prior sale, change or withdrawal.



**Call Affinity Real Estate**

**218-237-3333**

**info@affinityrealestate.com**



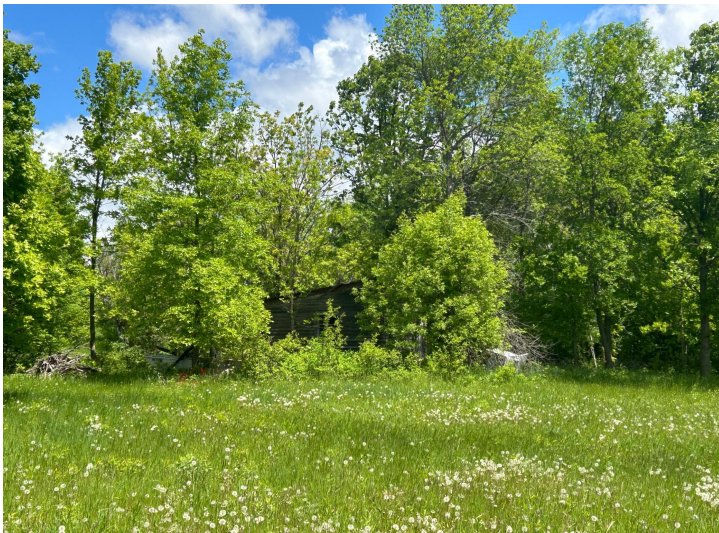
**Affinity Real Estate - 600 Park Avenue South - Park Rapids MN 56470**



website: [www.AffinityRealEstate.com](http://www.AffinityRealEstate.com) | email: [info@affinityrealestate.com](mailto:info@affinityrealestate.com) | office: 218-237-3333 | fax:218-237-3377



**\$100,000**  
MLS 6499860 Lake Land  
XXX 405th Ave  
Richville MN 56576



website: [www.AffinityRealEstate.com](http://www.AffinityRealEstate.com) | email: [info@affinityrealestate.com](mailto:info@affinityrealestate.com) | office: 218-237-3333 | fax:218-237-3377



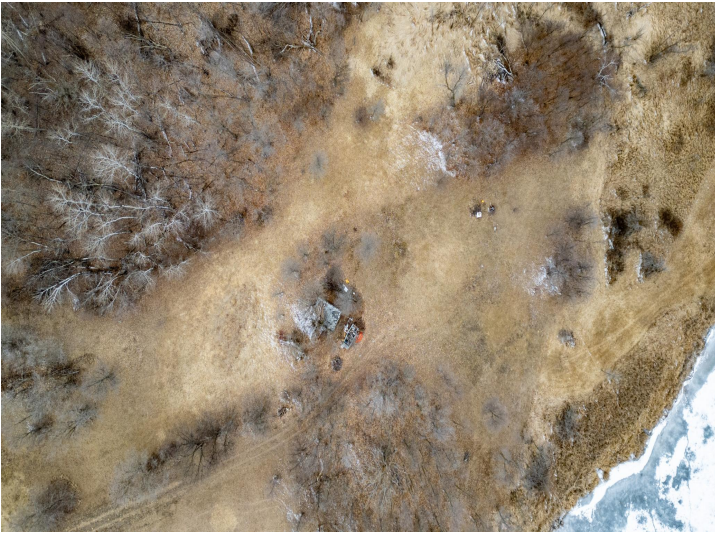
**\$100,000**  
MLS 6499860 Lake Land  
XXX 405th Ave  
Richville MN 56576



website: [www.AffinityRealEstate.com](http://www.AffinityRealEstate.com) | email: [info@affinityrealestate.com](mailto:info@affinityrealestate.com) | office: 218-237-3333 | fax:218-237-3377

**Affinity**  
REAL ESTATE INC

**\$100,000**  
MLS 6499860 Lake Land  
XXX 405th Ave  
Richville MN 56576



website: [www.AffinityRealEstate.com](http://www.AffinityRealEstate.com) | email: [info@affinityrealestate.com](mailto:info@affinityrealestate.com) | office: 218-237-3333 | fax:218-237-3377



**\$100,000**  
MLS 6499860 Lake Land  
XXX 405th Ave  
Richville MN 56576



website: [www.AffinityRealEstate.com](http://www.AffinityRealEstate.com) | email: [info@affinityrealestate.com](mailto:info@affinityrealestate.com) | office: 218-237-3333 | fax:218-237-3377



**\$100,000**  
MLS 6499860 Lake Land  
XXX 405th Ave  
Richville MN 56576



website: [www.AffinityRealEstate.com](http://www.AffinityRealEstate.com) | email: [info@affinityrealestate.com](mailto:info@affinityrealestate.com) | office: 218-237-3333 | fax: 218-237-3377



**\$100,000**  
MLS 6499860 Lake Land  
XXX 405th Ave  
Richville MN 56576