



MLS 6499886 Land

\$239,000

98.63 Acres

Raw Land

TBD County Highway 39

Osage MN 56570

Status: Active

Description:

SPORTSMANS PARADISE in the SMOKEY HILLS. Approximately 98 acres of hunting land near Shell Lake. This property offers great hunting opportunities and has over 6000 acres of adjacent state and county land that includes the Smokey Hills State Forest. With many great fishing lakes nearby this is an excellent opportunity to hunt, fish, snowmobile or hit the trails on your ATV. These woods include deer, bear, turkeys and ruffed grouse. Plenty of high ground to build a hunting shack and add a few food plots. The acreage features a nice mix of high ground, low ground, duck slough and numerous ridges and pinch points.

Additional Details:

Lot Acres	98.63
Lot Dimensions	80x
School District	309
Taxes	\$1,994
Taxes with Assessments	\$1,994
Tax Year	2023

Additional Features:

Driving Directions:

From Detroit Lakes. East on Hwy 34, North on CO Hwy 39 to property.



Listed By:
Lakeplace.com - Lakeshore and More

Affinity Real Estate Inc. participates in the Regional Multiple Listing Service of Minnesota, Inc Broker Reciprocity (sm) program, allowing us to display other broker's listings on our website. All properties are subject to prior sale, change or withdrawal.



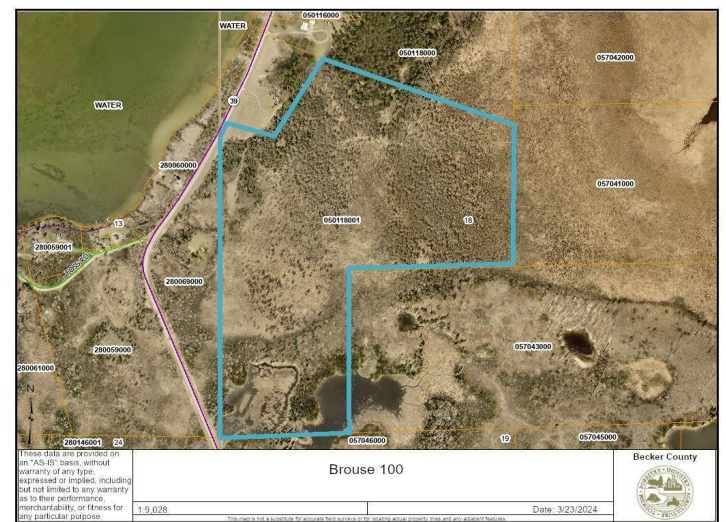
Call Affinity Real Estate

218-237-3333

info@affinityrealestate.com



Affinity Real Estate - 600 Park Avenue South - Park Rapids MN 56470



website: www.AffinityRealEstate.com | email: info@affinityrealestate.com | office: 218-237-3333 | fax: 218-237-3377



\$239,000
 MLS 6499886 Land
 TBD County Highway 39
 Osage MN 56570

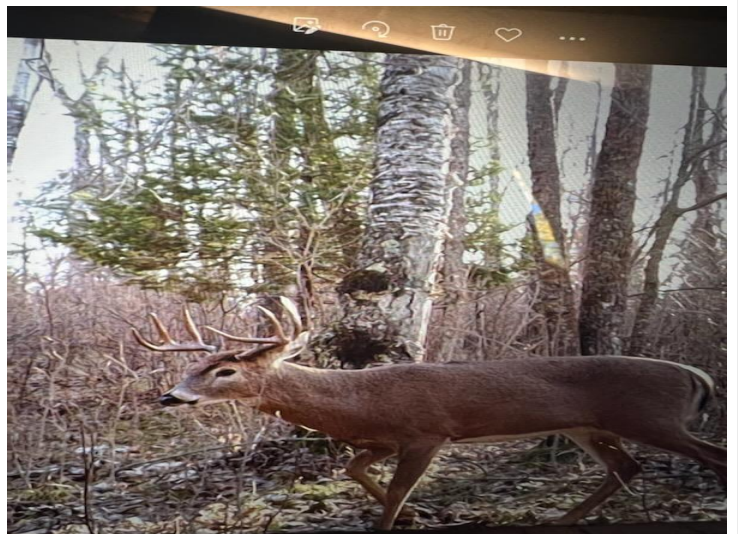
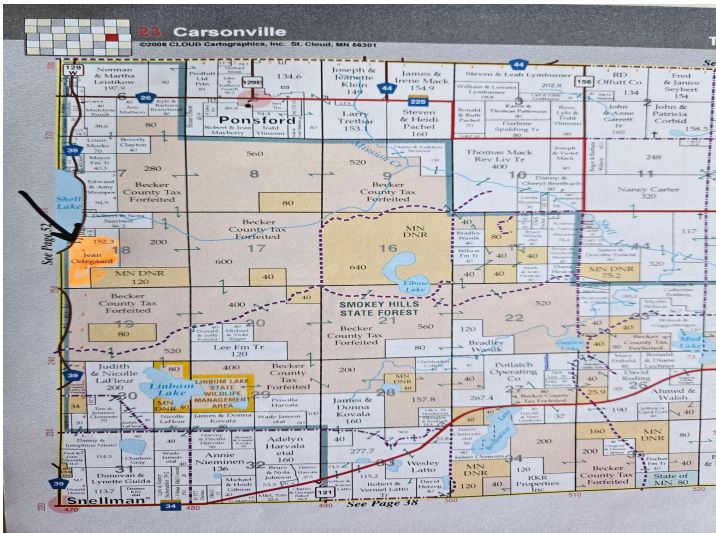


website: www.AffinityRealEstate.com | email: info@affinityrealestate.com | office: 218-237-3333 | fax: 218-237-3377



\$239,000

MLS 6499886 Land
TBD County Highway 39
Osage MN 56570



website: www.AffinityRealEstate.com | email: info@affinityrealestate.com | office: 218-237-3333 | fax: 218-237-3377



\$239,000
 MLS 6499886 Land
 TBD County Highway 39
 Osage MN 56570