



MLS 6500133 Lake Home

\$424,900

1,020 sq ft
2 bedrooms
1 baths

14016 Chippewa Loop
Park Rapids MN 56470

Waterfront: Long Lake (29016100)

Status: Active

Description:

Come enjoy perfect sand swimming and south facing panoramic lake views on beautiful Long Lake in Park Rapids. Long Lake is known for excellent fishing and recreational activities. It's location close to Park Rapids and all it's summer events make this a perfect weekend getaway. The cozy cabin features 2 beds, 1 bath and a loft that's perfect for extra sleeping. Stay comfortable with a wall furnace, heat pump and mini-split for A/C. On chilly nights cozy up next to the new Wilkening Soapstone fireplace for that true up north cabin feel. Outside you'll find the double lot offers plenty of flat ground for entertaining and a smokeless firepit so you can enjoy your lake views around a campfire. High speed internet is available. This cabin is in great shape and comes furnished. Scheduled your showing for this turn-key cabin today!

Additional Details:

Year Built	1954
Lot Acres	0.36
Lot Dimensions	100x155
School District	309
Taxes	\$1,866
Taxes with Assessments	\$2,066
Tax Year	2023

Additional Features:

Basement: None **Fuel:** Propane **Heat:** Forced Air, Heat Pump **Sewer:** Private Sewer, Tank with Drainage Field **Water:** Private, Sand Point, Well
Air Conditioning: Wall Unit(s)

Driving Directions:

From CR 6/Hwy 34: Go south on CR 6 to a left on Chippewa Loop (southern access). Property is .3 miles on right side.



Listed By:
Keller Williams Realty Professionals

Affinity Real Estate Inc. participates in the Regional Multiple Listing Service of Minnesota, Inc Broker Reciprocity (sm) program, allowing us to display other broker's listings on our website. All properties are subject to prior sale, change or withdrawal.



Call Affinity Real Estate

218-237-3333

info@affinityrealestate.com



Affinity Real Estate - 600 Park Avenue South - Park Rapids MN 56470



website: www.AffinityRealEstate.com | email: info@affinityrealestate.com | office: 218-237-3333 | fax: 218-237-3377

Affinity
REAL ESTATE INC

\$424,900
MLS 6500133 Lake Home
14016 Chippewa Loop
Park Rapids MN 56470



website: www.AffinityRealEstate.com | email: info@affinityrealestate.com | office: 218-237-3333 | fax: 218-237-3377

Affinity
REAL ESTATE INC

\$424,900
MLS 6500133 Lake Home
14016 Chippewa Loop
Park Rapids MN 56470



website: www.AffinityRealEstate.com | email: info@affinityrealestate.com | office: 218-237-3333 | fax: 218-237-3377

Affinity
REAL ESTATE INC

\$424,900
MLS 6500133 Lake Home
14016 Chippewa Loop
Park Rapids MN 56470



website: www.AffinityRealEstate.com | email: info@affinityrealestate.com | office: 218-237-3333 | fax: 218-237-3377

Affinity
REAL ESTATE INC

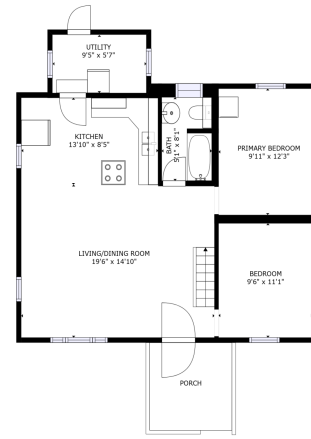
\$424,900
MLS 6500133 Lake Home
14016 Chippewa Loop
Park Rapids MN 56470



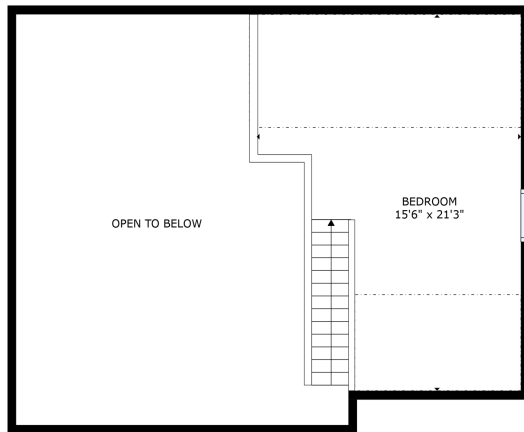
website: www.AffinityRealEstate.com | email: info@affinityrealestate.com | office: 218-237-3333 | fax: 218-237-3377

Affinity
REAL ESTATE INC

\$424,900
MLS 6500133 Lake Home
14016 Chippewa Loop
Park Rapids MN 56470



TOTAL: 898 sq. ft
FLOOR 1: 756 sq. ft, FLOOR 2: 142 sq. ft
EXCLUDED AREAS: PORCH: 71 sq. ft, OPEN TO BELOW: 372 sq. ft, CRAWL SPACE: 155 sq. ft **Matterport**



TOTAL: 898 sq. ft
FLOOR 1: 756 sq. ft, FLOOR 2: 142 sq. ft
EXCLUDED AREAS: PORCH: 71 sq. ft, OPEN TO BELOW: 372 sq. ft, CRAWL SPACE: 155 sq. ft **Matterport**

website: www.AffinityRealEstate.com | email: info@affinityrealestate.com | office: 218-237-3333 | fax: 218-237-3377

Affinity
 REAL ESTATE INC

\$424,900
 MLS 6500133 Lake Home
 14016 Chippewa Loop
 Park Rapids MN 56470