



MLS 6500415 Land

\$40,000

3.2 Acres
Subdivided

465 Oak Circle
Vergas MN 56587

Status: Active

Description:

Nicely wooded private building lots. Build, live and play in the hopping little town of Vergas! This lot just on the edge of town boasts beautiful views of Lawrence Lake! Fantastic access to all that Vergas has to offer including shopping, eating, a gym, grocery store, parks, an amazing public beach and so much more! Come join the little town that doesn't know it's little!! Incentives available! Shouses welcome! This is lot 6 on the map

Additional Details:

Lot Acres	3.2
Lot Dimensions	IRR
School District	23
Taxes	\$2,692
Taxes with Assessments	\$2,692
Tax Year	2023

Additional Features:

Driving Directions:

From Detroit Lakes Follow US-59 S and Co Hwy 17 to W Lake St in Vergas --19 min (15.0 mi) Turn right onto W Lake St Turn Left in 1 min (0.3 mi) (this road doesn't have a street name) Continue down road until you reach property



Listed By:
Re/Max Lakes Region

Affinity Real Estate Inc. participates in the Regional Multiple Listing Service of Minnesota, Inc Broker Reciprocity (sm) program, allowing us to display other broker's listings on our website. All properties are subject to prior sale, change or withdrawal.



Call Affinity Real Estate

218-237-3333

info@affinityrealestate.com



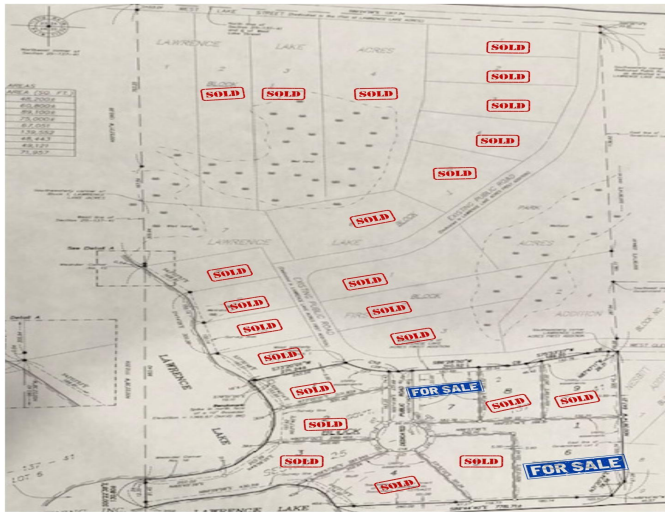
Affinity Real Estate - 600 Park Avenue South - Park Rapids MN 56470



website: www.AffinityRealEstate.com | email: info@affinityrealestate.com | office: 218-237-3333 | fax: 218-237-3377



\$40,000
 MLS 6500415 Land
 465 Oak Circle
 Vergas MN 56587



website: www.AffinityRealEstate.com | email: info@affinityrealestate.com | office: 218-237-3333 | fax: 218-237-3377



\$40,000
 MLS 6500415 Land
 465 Oak Circle
 Vergas MN 56587