



MLS 6501833 Lake Land

**\$114,900**

**Description:**

Beautiful, well thought out lot, maintenance free, w/small lawn and large pea gravel parking area. Included: 2006 Custom Dutch Park Model w/Dble Loft w/attached MN room, lg private paver patio nestled behind MN Room and 8x10 storage shed. Step into the MN Room to sunshine, an Ikea sleeper sofa, 2 gliders and end table, newer Luxury Flooring throughout. Park Model has roomy living room, Ikea sleeper sofa, glider chair, and bistro table/2 chairs, easily seats 6 people around the Flat Screen TV above the Dimplex Electric Fireplace w/Glass Stones. Galley Kitchen has tons of storage, stackable washer/dryer, Fridge off to the side, lots of storage and a nice size bathroom w/tub/shower, vanity and full-size toilet. One step down to Queen Bedroom w/2 full hanging mirrored closets and 6-drawer bureau in the middle and TV on top.

Upstairs to double loft w/Two beds and 4th TV/ Sleeps up to 10. Turn Key at its best. Many shared amenities at Whitebirch Campground. Come take a look!!

**Additional Details:**

Lot Acres	0.07
Lot Dimensions	40 x 80
School District	186
Taxes	\$491
Taxes with Assessments	\$516
Tax Year	2024

**Additional Features:**

**Driving Directions:**

From 7070 Dove St and the Security Gates of Whitebirch Cluster 2 - once securing access thru the gates go forward to Right on Whitebirch Way to #30303 on Left.



Listed By:  
Edina Realty, Inc.

Affinity Real Estate Inc. participates in the Regional Multiple Listing Service of Minnesota, Inc Broker Reciprocity (sm) program, allowing us to display other broker's listings on our website. All properties are subject to prior sale, change or withdrawal.



**Call Affinity Real Estate**

**218-237-3333**

**[info@affinityrealestate.com](mailto:info@affinityrealestate.com)**



**Affinity Real Estate - 600 Park Avenue South - Park Rapids MN 56470**





website: [www.AffinityRealEstate.com](http://www.AffinityRealEstate.com) | email: [info@affinityrealestate.com](mailto:info@affinityrealestate.com) | office: 218-237-3333 | fax: 218-237-3377

**Affinity**  
REAL ESTATE INC

**\$114,900**  
MLS 6501833 Lake Land  
30303 Whitebirch Way  
Breezy Point MN 56472





website: [www.AffinityRealEstate.com](http://www.AffinityRealEstate.com) | email: [info@affinityrealestate.com](mailto:info@affinityrealestate.com) | office: 218-237-3333 | fax: 218-237-3377

**Affinity**  
REAL ESTATE INC

**\$114,900**  
MLS 6501833 Lake Land  
30303 Whitebirch Way  
Breezy Point MN 56472



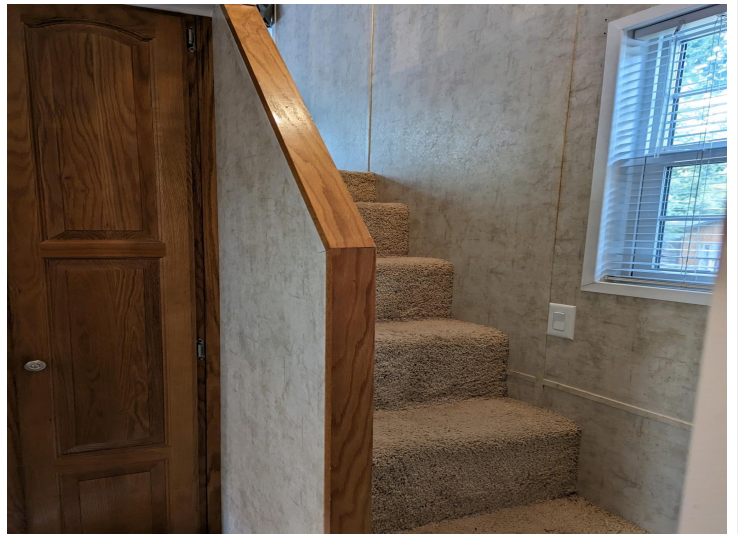


website: [www.AffinityRealEstate.com](http://www.AffinityRealEstate.com) | email: [info@affinityrealestate.com](mailto:info@affinityrealestate.com) | office: 218-237-3333 | fax: 218-237-3377

**Affinity**  
REAL ESTATE INC

**\$114,900**  
MLS 6501833 Lake Land  
30303 Whitebirch Way  
Breezy Point MN 56472





website: [www.AffinityRealEstate.com](http://www.AffinityRealEstate.com) | email: [info@affinityrealestate.com](mailto:info@affinityrealestate.com) | office: 218-237-3333 | fax: 218-237-3377



**\$114,900**  
MLS 6501833 Lake Land  
30303 Whitebirch Way  
Breezy Point MN 56472





website: [www.AffinityRealEstate.com](http://www.AffinityRealEstate.com) | email: [info@affinityrealestate.com](mailto:info@affinityrealestate.com) | office: 218-237-3333 | fax: 218-237-3377



**\$114,900**  
 MLS 6501833 Lake Land  
 30303 Whitebirch Way  
 Breezy Point MN 56472





website: [www.AffinityRealEstate.com](http://www.AffinityRealEstate.com) | email: [info@affinityrealestate.com](mailto:info@affinityrealestate.com) | office: 218-237-3333 | fax: 218-237-3377



**\$114,900**  
 MLS 6501833 Lake Land  
 30303 Whitebirch Way  
 Breezy Point MN 56472