



MLS 6502311 Lake Home

**\$625,000**

1,730 sq ft  
2 bedrooms  
2 baths

4621 Shore Drive  
Remer MN 56672

Waterfront: Inguadona

Status: Closed

#### Description:

Inguadona Lake; Dream Home Quality Chalet! Immaculate throughout, the main level features, 2 Bedrooms, 2 Baths, plus the Kitchen/Dining/Living/Fireplace in the Great Room under vaulted Knotty Pine ceilings. Easy "at grade" entry from the outdoors or the double attached garage with the Utility/Laundry area as a transition before entering the Great Room and its upper story windows, all facing due west into the sunsets. This "Cooks Kitchen" is extremely functional, and decadent, with its Granite Counter Tops, Stainless Steel App, inc a 5 burner gas stove, a Central Eating Bar, all with Rustic Hickory Cabinets, plus a formal dining, all overlooking the Lakescape. The patio door draws you out to a 14x23 stamped concrete sitting/picnic area, then to the waters edge, w/perfect gentle elevation to an exposed sand beach, and a roll in dock. 24x28 att Dbl Gar+ a det 26x38 Toy Gar w/heated shop or office. All impeccably clean, well organized, and cared for. Public land trails nearby.

#### Additional Details:

Year Built	2016
Lot Acres	0.7
Lot Dimensions	101x276x100x250
Garage Stalls	3
School District	118
Taxes	\$2,216
Taxes with Assessments	\$2,282
Tax Year	2024

#### Additional Features:

**Basement:** Slab **Fuel:** Electric, Propane **Garage:** 3 **Heat:** Boiler, Forced Air, Fireplace(s), Hot Water, Radiant Floor, Radiant **Sewer:** Mound Septic, Tank with Drainage Field **Water:** Well **Air Conditioning:** Central Air

#### Driving Directions:

From Longville east on County 7, right onto 46th street NE, left on East Shore Dr. to fire number 4621.



Listed By:  
Moran Realty

Affinity Real Estate Inc. participates in the Regional Multiple Listing Service of Minnesota, Inc Broker Reciprocity (sm) program, allowing us to display other broker's listings on our website. All properties are subject to prior sale, change or withdrawal.



Call Affinity Real Estate

**218-237-3333**

[info@affinityrealestate.com](mailto:info@affinityrealestate.com)



Affinity Real Estate - 600 Park Avenue South - Park Rapids MN 56470





website: [www.AffinityRealEstate.com](http://www.AffinityRealEstate.com) | email: [info@affinityrealestate.com](mailto:info@affinityrealestate.com) | office: 218-237-3333 | fax: 218-237-3377



**\$625,000**  
MLS 6502311 Lake Home  
4621 Shore Drive  
Remer MN 56672





website: [www.AffinityRealEstate.com](http://www.AffinityRealEstate.com) | email: [info@affinityrealestate.com](mailto:info@affinityrealestate.com) | office: 218-237-3333 | fax: 218-237-3377

**Affinity**  
REAL ESTATE INC

**\$625,000**  
MLS 6502311 Lake Home  
4621 Shore Drive  
Remer MN 56672





website: [www.AffinityRealEstate.com](http://www.AffinityRealEstate.com) | email: [info@affinityrealestate.com](mailto:info@affinityrealestate.com) | office: 218-237-3333 | fax: 218-237-3377

**Affinity**  
REAL ESTATE INC

**\$625,000**  
MLS 6502311 Lake Home  
4621 Shore Drive  
Remer MN 56672





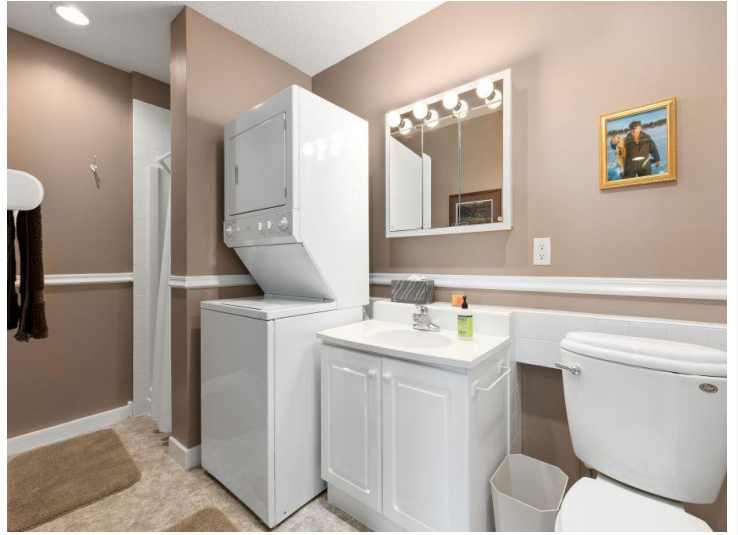
website: [www.AffinityRealEstate.com](http://www.AffinityRealEstate.com) | email: [info@affinityrealestate.com](mailto:info@affinityrealestate.com) | office: 218-237-3333 | fax: 218-237-3377

**Affinity**  
REAL ESTATE INC

**\$625,000**

MLS 6502311 Lake Home  
4621 Shore Drive  
Remer MN 56672





website: [www.AffinityRealEstate.com](http://www.AffinityRealEstate.com) | email: [info@affinityrealestate.com](mailto:info@affinityrealestate.com) | office: 218-237-3333 | fax: 218-237-3377

**Affinity**  
REAL ESTATE INC

**\$625,000**  
MLS 6502311 Lake Home  
4621 Shore Drive  
Remer MN 56672





website: [www.AffinityRealEstate.com](http://www.AffinityRealEstate.com) | email: [info@affinityrealestate.com](mailto:info@affinityrealestate.com) | office: 218-237-3333 | fax: 218-237-3377

**Affinity**  
REAL ESTATE INC

**\$625,000**  
MLS 6502311 Lake Home  
4621 Shore Drive  
Remer MN 56672





website: [www.AffinityRealEstate.com](http://www.AffinityRealEstate.com) | email: [info@affinityrealestate.com](mailto:info@affinityrealestate.com) | office: 218-237-3333 | fax:218-237-3377



**\$625,000**  
MLS 6502311 Lake Home  
4621 Shore Drive  
Remer MN 56672