



MLS 6502680 Lake Land

\$210,000

Description:

Nestled on Shell Lake, this lakeside property offers families a tranquil escape from the hustle and bustle of everyday life. 150-foot level lot and a sand bottom. A newer well and septic holding tank. The pole building, with its sturdy cement flooring, provides ample space for storing your outdoor gear and tools. And for those who love the freedom of the open road, two RV power boxes await your camper or motorhome.

Whether you seek quiet contemplation, thrilling adventures, or family bonding, this lakeside haven on Shell Lake invites you to create your own chapter. Welcome to the Lake.

Additional Details:

Lot Acres	0.8
Lot Dimensions	202x184x148x221
School District	23
Taxes	\$754
Taxes with Assessments	\$754
Tax Year	2023

Additional Features:

Driving Directions:

From Hwy 71/34 in Park Rapids, go W on Hwy 34 to Snellman (17.3) - R on Co Hwy 39 Approx. 3.5 miles, L on Foss Road to property on left.



Listed By:
RE/MAX Advisors-West

Affinity Real Estate Inc. participates in the Regional Multiple Listing Service of Minnesota, Inc Broker Reciprocity (sm) program, allowing us to display other broker's listings on our website. All properties are subject to prior sale, change or withdrawal.



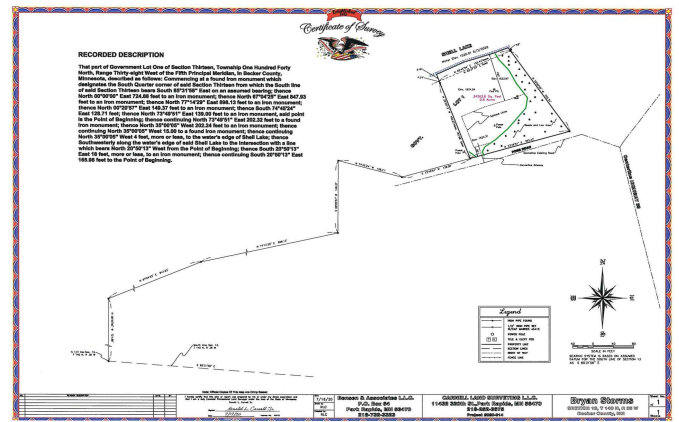
Call Affinity Real Estate

218-237-3333

info@affinityrealestate.com



Affinity Real Estate - 600 Park Avenue South - Park Rapids MN 56470



website: www.AffinityRealEstate.com | email: info@affinityrealestate.com | office: 218-237-3333 | fax: 218-237-3377

Affinity
REAL ESTATE INC

\$210,000
MLS 6502680 Lake Land
46854 Foss Road
Osage MN 56570



website: www.AffinityRealEstate.com | email: info@affinityrealestate.com | office: 218-237-3333 | fax: 218-237-3377



\$210,000
 MLS 6502680 Lake Land
 46854 Foss Road
 Osage MN 56570



website: www.AffinityRealEstate.com | email: info@affinityrealestate.com | office: 218-237-3333 | fax: 218-237-3377



\$210,000

MLS 6502680 Lake Land
46854 Foss Road
Osage MN 56570