

MLS 6503096 Lake Land

\$139,000

Description:

Paradise awaits! From beautiful sunsets to abundant fishing, Stump Lake offers it all. Located down the Mississippi River from Lake Bemidji, this property allows you to travel by boat to numerous other lakes on the chain. Stump Lake has a maximum depth of 24 feet and covers 235 acres with 9.83 miles of shoreline. Fish species in the lake include crappie, bluegill, sunfish, largemouth bass, walleye, yellow bullhead, perch, musky and more. Build your dream house on one of the last lots available on the lake with picturesque views enjoyed from the luxury of your forever home. Come see this wonderful lot and imagine the possibilities.

Additional Details:

Lot Acres	0.79
Lot Dimensions	100x305
School District	363
Taxes	\$600
Taxes with Assessments	\$600
Tax Year	2023

Additional Features:

Driving Directions:

From downtown Bemidji take Bemidji Ave S to 1st St E. Left on 1st St E to Lake Ave. Left on Lake Ave to Power Dam. Right on Power Dam to Peninsula Ct. Left on Peninsula Ct. Property will be on your right.



Listed By:
Better Homes and Gardens Real Estate First Choice

Affinity Real Estate Inc. participates in the Regional Multiple Listing Service of Minnesota, Inc Broker Reciprocity (sm) program, allowing us to display other broker's listings on our website. All properties are subject to prior sale, change or withdrawal.



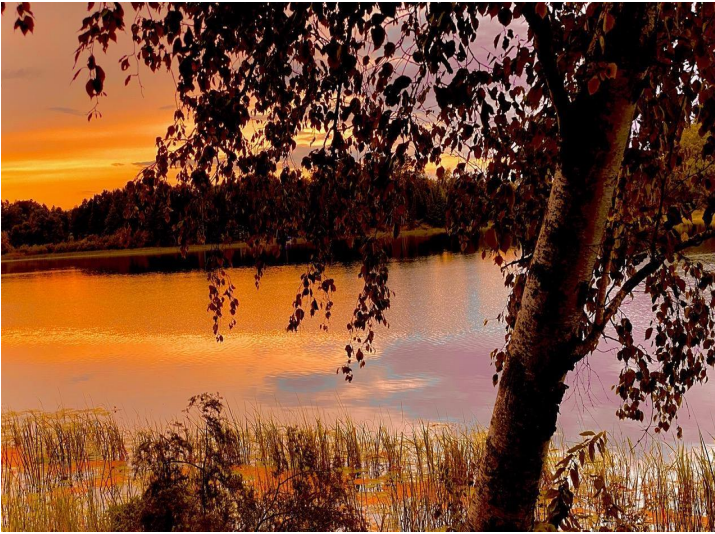
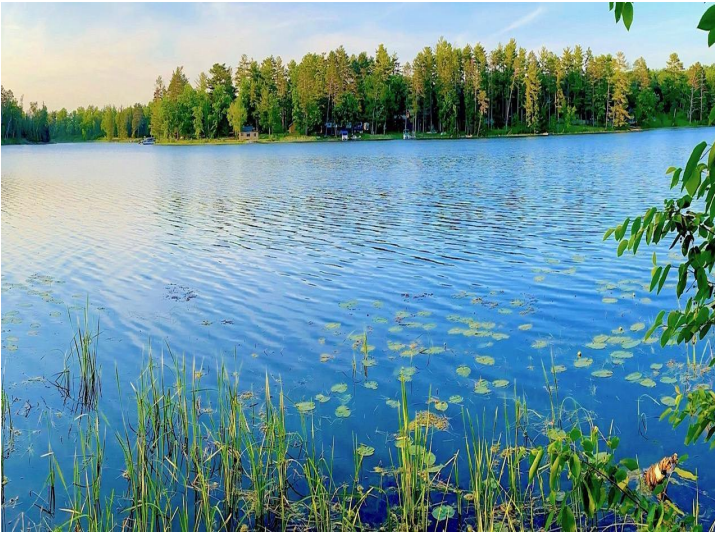
Call Affinity Real Estate

218-237-3333

info@affinityrealestate.com



Affinity Real Estate - 600 Park Avenue South - Park Rapids MN 56470

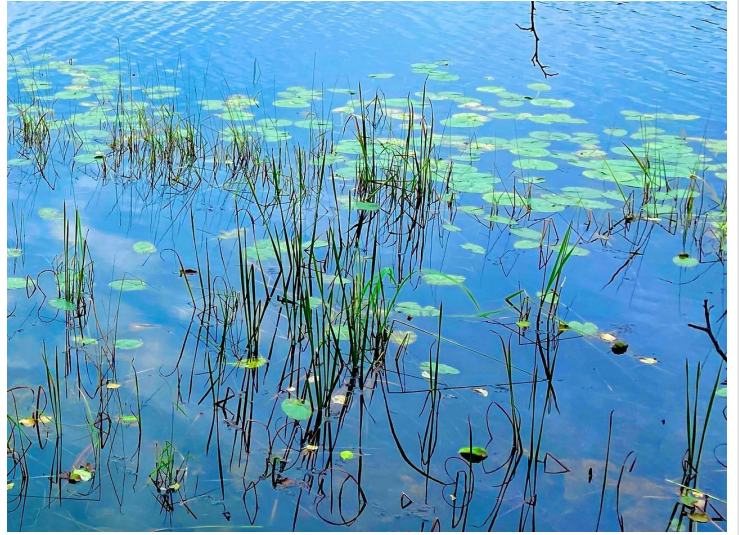


website: www.AffinityRealEstate.com | email: info@affinityrealestate.com | office: 218-237-3333 | fax: 218-237-3377



\$139,000

MLS 6503096 Lake Land
TBD Peninsula Court
Bemidji MN 56601



website: www.AffinityRealEstate.com | email: info@affinityrealestate.com | office: 218-237-3333 | fax: 218-237-3377



\$139,000

MLS 6503096 Lake Land
TBD Peninsula Court
Bemidji MN 56601



website: www.AffinityRealEstate.com | email: info@affinityrealestate.com | office: 218-237-3333 | fax: 218-237-3377



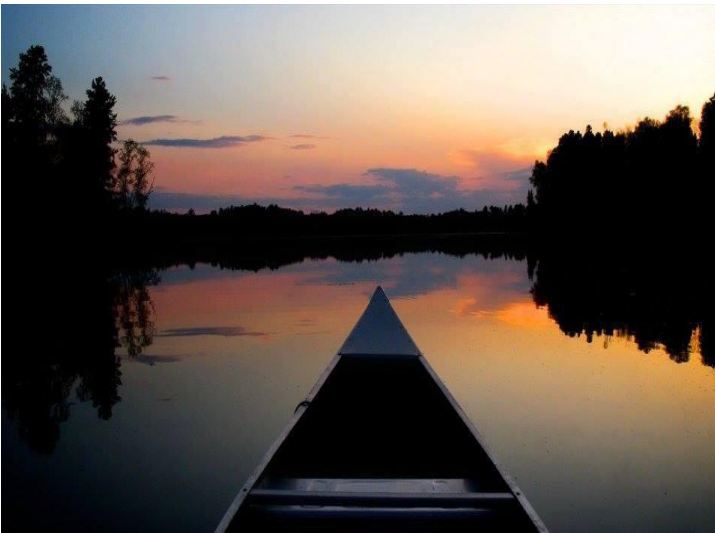
\$139,000
MLS 6503096 Lake Land
TBD Peninsula Court
Bemidji MN 56601



website: www.AffinityRealEstate.com | email: info@affinityrealestate.com | office: 218-237-3333 | fax: 218-237-3377

Affinity
REAL ESTATE INC

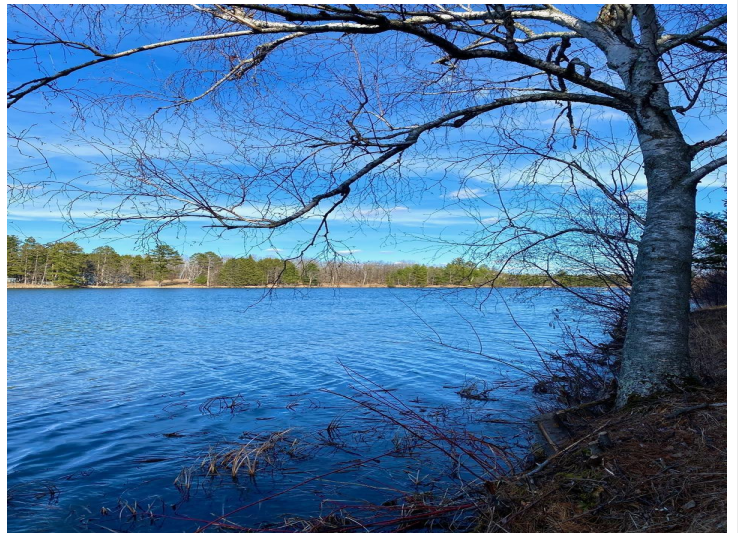
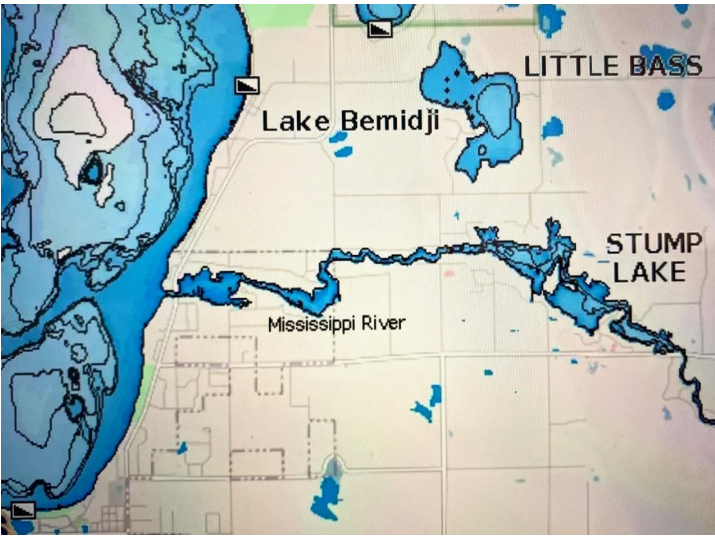
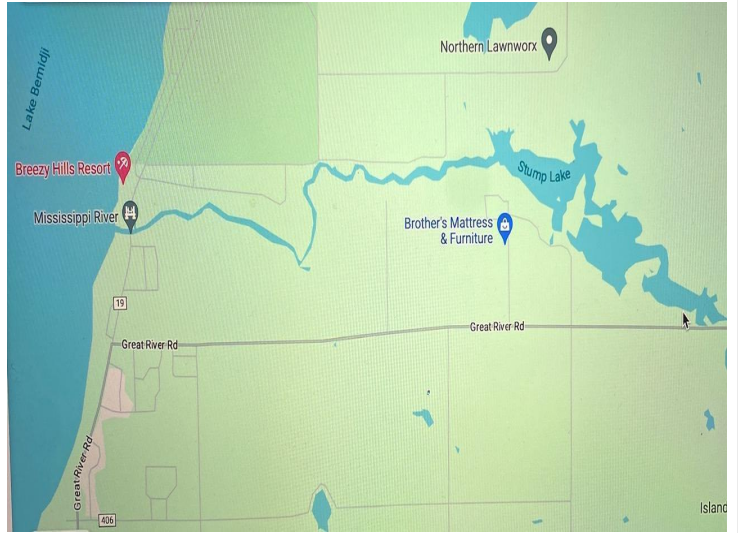
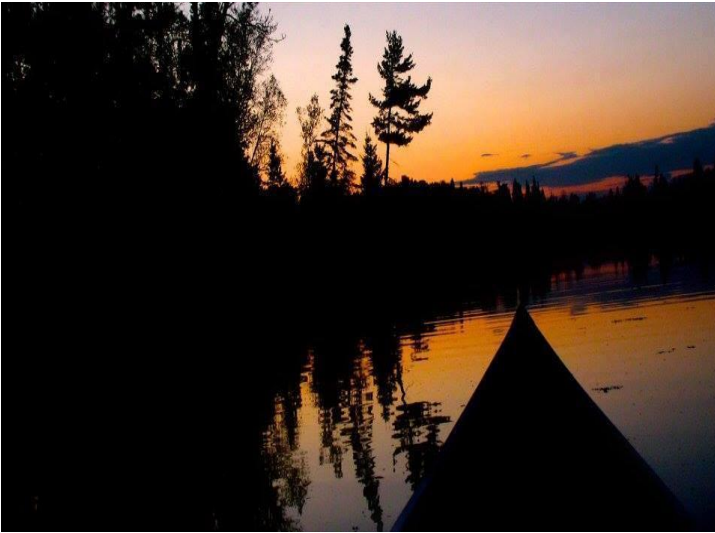
\$139,000
MLS 6503096 Lake Land
TBD Peninsula Court
Bemidji MN 56601



website: www.AffinityRealEstate.com | email: info@affinityrealestate.com | office: 218-237-3333 | fax: 218-237-3377



\$139,000
MLS 6503096 Lake Land
TBD Peninsula Court
Bemidji MN 56601



website: www.AffinityRealEstate.com | email: info@affinityrealestate.com | office: 218-237-3333 | fax: 218-237-3377



\$139,000

MLS 6503096 Lake Land
TBD Peninsula Court
Bemidji MN 56601



website: www.AffinityRealEstate.com | email: info@affinityrealestate.com | office: 218-237-3333 | fax: 218-237-3377



\$139,000

MLS 6503096 Lake Land
TBD Peninsula Court
Bemidji MN 56601