



MLS 6503582 Residential

\$599,000

3,800 sq ft
3 bedrooms
3 baths

29182 State Highway 34
Detroit Lakes MN 56501

Status: Active

Description:

Discover the perfect blend of privacy, practicality, and comfort at this property sitting on 29 acres just 1 mile from Detroit Lakes! This home boasts not just an impeccably maintained exterior, but also a wealth of custom features that enhance everyday living. Highlights include a heated shop at the back of the garage - a dream for hobbyists and DIY enthusiasts. Step into the backyard to find a substantial Foltz building, offering vast space for all your storage or project needs. Inside, the kitchen awaits with custom storage solutions in the cabinets, making organization a breeze. There is plenty of room to host family and friends with a large dining area as well as expansive living room with vaulted/beamed ceiling and vast fireplace. All this, wrapped up in an exterior that's not only in excellent condition but also designed for minimal maintenance. This property is a must-see for those valuing practicality, comfort, privacy, and the opportunity to make their home truly their own.

Additional Details:

Year Built	1980
Lot Acres	29.33
Lot Dimensions	irr
Garage Stalls	2
School District	22
Taxes	\$4,092
Taxes with Assessments	\$4,092
Tax Year	2023

Additional Features:

Fuel: Electric **Heat:** Dual, Heat Pump

Driving Directions:

East of DL on # 34 2.2 miles, first home past County # 25 on north side of # 34. Land borders # 34 & # 25. Large 3 acre front yard. Trees border 3 sides.



Listed By:
Real Broker

Affinity Real Estate Inc. participates in the Regional Multiple Listing Service of Minnesota, Inc Broker Reciprocity (sm) program, allowing us to display other broker's listings on our website. All properties are subject to prior sale, change or withdrawal.



Call Affinity Real Estate

218-237-3333

info@affinityrealestate.com



Affinity Real Estate - 600 Park Avenue South - Park Rapids MN 56470



website: www.AffinityRealEstate.com | email: info@affinityrealestate.com | office: 218-237-3333 | fax: 218-237-3377



\$599,000

MLS 6503582 Residential
29182 State Highway 34
Detroit Lakes MN 56501



website: www.AffinityRealEstate.com | email: info@affinityrealestate.com | office: 218-237-3333 | fax: 218-237-3377

Affinity
REAL ESTATE INC

\$599,000

MLS 6503582 Residential
29182 State Highway 34
Detroit Lakes MN 56501



website: www.AffinityRealEstate.com | email: info@affinityrealestate.com | office: 218-237-3333 | fax: 218-237-3377



\$599,000
 MLS 6503582 Residential
 29182 State Highway 34
 Detroit Lakes MN 56501

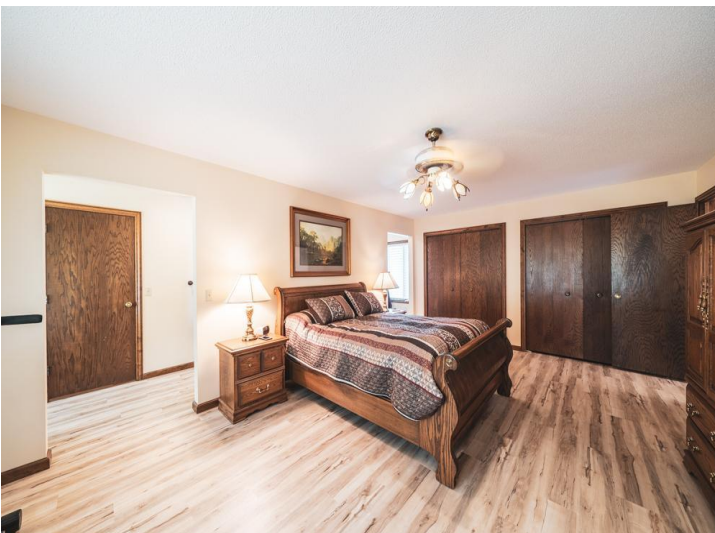


website: www.AffinityRealEstate.com | email: info@affinityrealestate.com | office: 218-237-3333 | fax: 218-237-3377

Affinity
REAL ESTATE INC

\$599,000

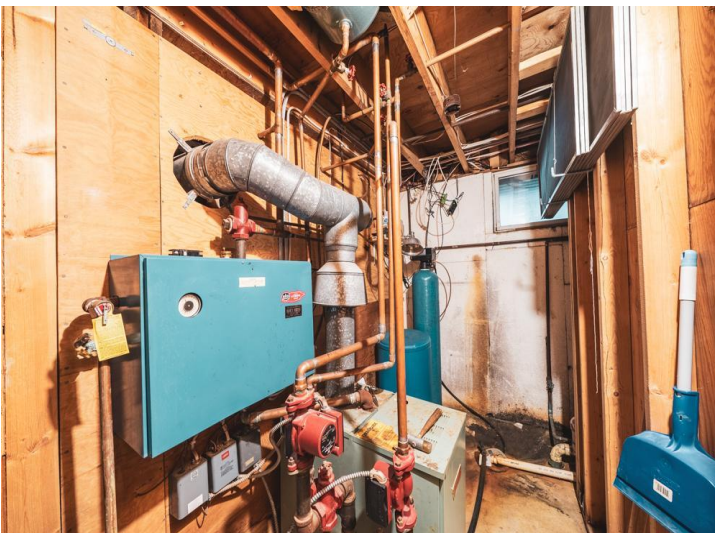
MLS 6503582 Residential
29182 State Highway 34
Detroit Lakes MN 56501



website: www.AffinityRealEstate.com | email: info@affinityrealestate.com | office: 218-237-3333 | fax: 218-237-3377

Affinity
REAL ESTATE INC

\$599,000
MLS 6503582 Residential
29182 State Highway 34
Detroit Lakes MN 56501



website: www.AffinityRealEstate.com | email: info@affinityrealestate.com | office: 218-237-3333 | fax: 218-237-3377

Affinity
REAL ESTATE INC

\$599,000
MLS 6503582 Residential
29182 State Highway 34
Detroit Lakes MN 56501



website: www.AffinityRealEstate.com | email: info@affinityrealestate.com | office: 218-237-3333 | fax: 218-237-3377



\$599,000

MLS 6503582 Residential
29182 State Highway 34
Detroit Lakes MN 56501



website: www.AffinityRealEstate.com | email: info@affinityrealestate.com | office: 218-237-3333 | fax: 218-237-3377



\$599,000
 MLS 6503582 Residential
 29182 State Highway 34
 Detroit Lakes MN 56501



website: www.AffinityRealEstate.com | email: info@affinityrealestate.com | office: 218-237-3333 | fax: 218-237-3377



\$599,000

MLS 6503582 Residential
29182 State Highway 34
Detroit Lakes MN 56501