



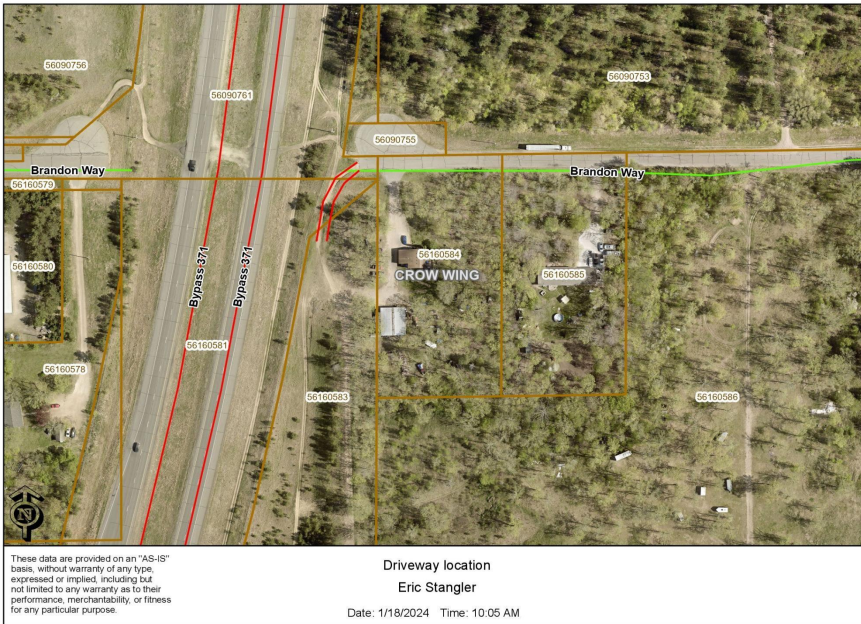
MLS 6504024 Land

**\$360,000**

7.03 Acres  
Raw Land

6207 Brandon Way  
Brainerd MN 56401

Status: Active



#### Description:

Location! Location! Location! Prime opportunity awaits with this expansive 6.86 acre commercial property located just south of Baxter with over 1200 feet of high visibility frontage along MN-371 bypass. Ideal for a range of commercial ventures, seize the chance to make your mark on this highly coveted stretch of highway. Enquire today to unlock the potential of this sought-after investment opportunity."

#### Additional Details:

Lot Acres	7.03
Lot Dimensions	410.87x1234.76x151.84x1288.35
School District	896
Taxes	\$208
Taxes with Assessments	\$208
Tax Year	2024

#### Additional Features:

#### Driving Directions:

From Baxter drive south on MN-371. Take the MN-371 Bus exit, turn left onto Ariell dr sw. Turn left onto Barrows Ave, Turn right onto Brandon way.(entrance to property is at the end of the culda sac at the end of Brandon Way.)



Listed By:  
Ashworth Real Estate

Affinity Real Estate Inc. participates in the Regional Multiple Listing Service of Minnesota, Inc Broker Reciprocity (sm) program, allowing us to display other broker's listings on our website. All properties are subject to prior sale, change or withdrawal.



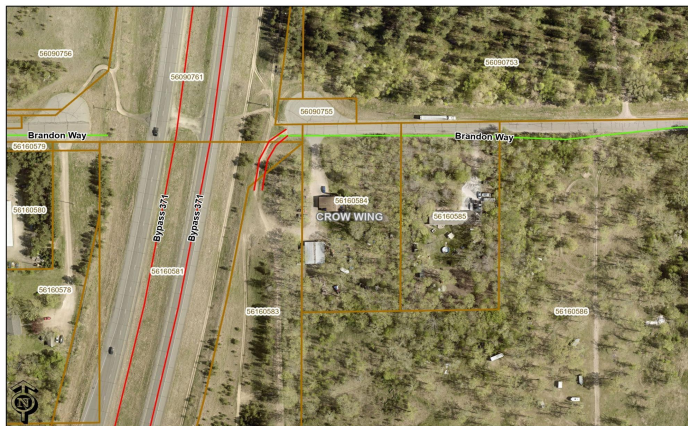
Call Affinity Real Estate

**218-237-3333**

[info@affinityrealestate.com](mailto:info@affinityrealestate.com)



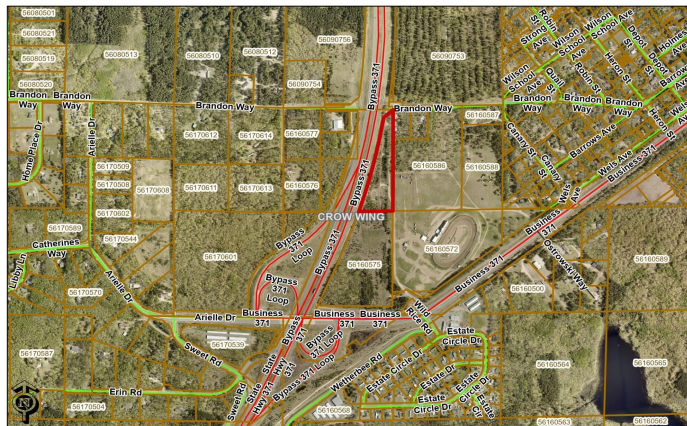
Affinity Real Estate - 600 Park Avenue South - Park Rapids MN 56470



These data are provided on an "AS-IS" basis, without warranty of any type, expressed or implied, including but not limited to any warranty as to their performance, merchantability, or fitness for any particular purpose.

Driveway location  
Eric Stangler

Date: 1/18/2024 Time: 10:05 AM



These data are provided on an "AS-IS" basis, without warranty of any type, expressed or implied, including but not limited to any warranty as to their performance, merchantability, or fitness for any particular purpose.

Date: 3/14/2024 Time: 1:49 PM

website: [www.AffinityRealEstate.com](http://www.AffinityRealEstate.com) | email: [info@affinityrealestate.com](mailto:info@affinityrealestate.com) | office: 218-237-3333 | fax: 218-237-3377



**\$360,000**  
MLS 6504024 Land  
6207 Brandon Way  
Brainerd MN 56401